

**CITY OF CORDOVA, ALASKA
RESOLUTION 08-25-21**

**A RESOLUTION OF THE COUNCIL OF THE CITY OF CORDOVA, ALASKA,
ADOPTING THE CITY OF CORDOVA COMPREHENSIVE TRAILS PLAN 2025**

WHEREAS, the Cordova Trails Committee is tasked with advising the Parks and Recreation Commission on the development of new trails, enhancement of existing trails and the development of additional trail resources; and

WHEREAS, the Cordova Trails Committee developed the Cordova Comprehensive Trails Plan through a multiyear public process that outlines goals, strategies, and priorities for improving, maintaining, and expanding Cordova's trail system; and

WHEREAS, this document is a collaborative effort involving the Cordova Trails Committee, the Eyak Corporation, and Federal, State, and City government entities; and

WHEREAS, this document serves as a strategic resource designed to support funding applications and foster partnerships, thereby enhancing fiscal opportunities and collaborative initiatives.

NOW, THEREFORE BE IT RESOLVED THAT the Council of the City of Cordova, Alaska, does hereby adopt The City of Cordova Comprehensive Trails Plan 2025.

PASSED AND APPROVED THIS 6th DAY OF AUGUST 2025





Kristin Smith, Mayor

ATTEST:

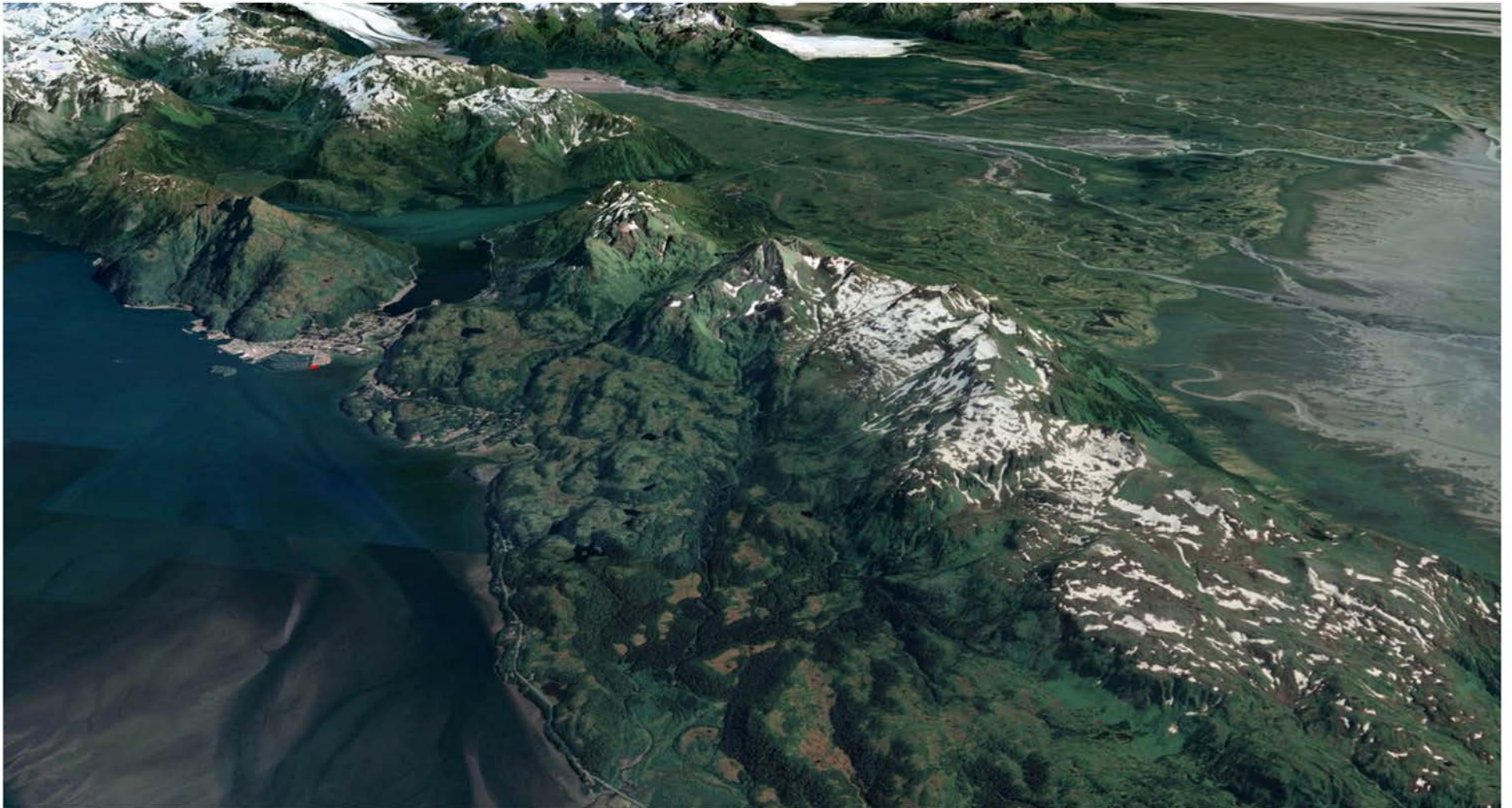


Susan Bourgeois, CMC, City Clerk



City of Cordova

Comprehensive Trails Plan 2025



Welcome

The Cordova Comprehensive Trails Plan is the result of a 7 year, community-wide, planning effort. This plan achieves the primary goal established in 2018 of setting a clear direction for managing, maintaining, and promoting Cordova trails. "Managing" includes trail planning and design, construction, and funding. Final implementation of the plan rests upon the trail plan partners and the public. Partners to the plan represent Federal, State, and City government, Native Corporations and the Cordova Trails Plan committee. These partners will combine resources with individuals, businesses, and foundations in order to establish a cost-effective and diversified trail system. Some examples of the cost savings that can be realized through these partnerships are the use of volunteer labor, eligibility for grants not available to governments, in-kind contributions of expertise in trail planning and design, and collaboration to supply resources for trail maintenance.

Acknowledgements

City of Cordova

Director, Parks and Recreation - Duncan Chisholm (prior), Samantha Hagerthy-Schneider (current)

Cordova Trails Committee (CTC)

Elizabeth Senear, Toni Godes, Ryan Schuetze, David Zastrow, Wendy Ranney, Michelle Hahn, Stormy Haught

Other Contributors:

NPS Rivers, Trails & Conservation Assistance Program (RTCA)

Zachary Babb, Kristin Pace, Leigh Ann Belloli, Lizzy Dean, Michael Downs, Page Seibert

Casey Planning & Design

Nancy Casey

Chugach National Forest

David Zastrow, Kate Mohatt, Dylan Charnon, Leah Mullins, Caine Daugherty

The Eyak Corporation

Tiffany Beedle

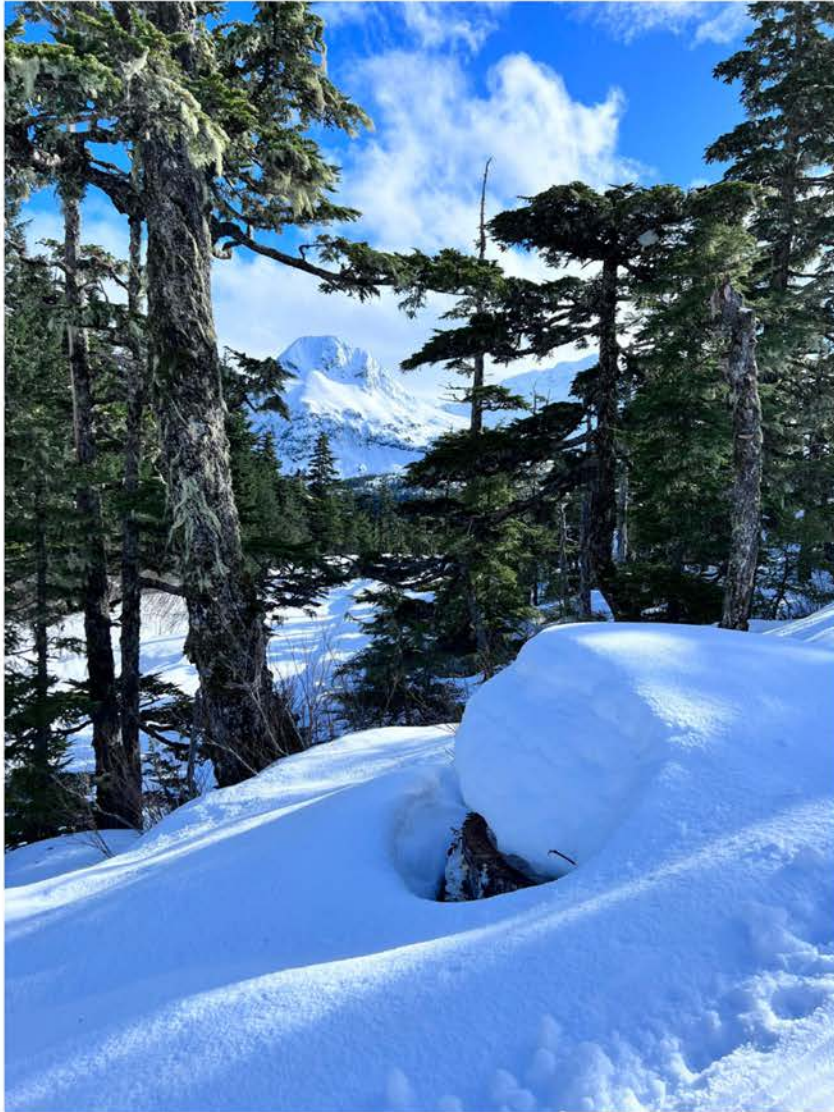
Sheridan Alpine Association

Dave Branshaw, Paul Swartzbart, John Williams, Heath Kocan, Steve Vican

Cordova Historical Society

Cordova Covered Spaces Project - Natasha Casciano, Dotty Widman

Table of Contents



Welcome	2
Acknowledgments	3
Table of Contents	4
Introduction	5
Executive Summary	6
About Cordova.....	8
Existing Plans.....	13
Overview	14
Values, Mission, and Vision	15
Goals	16
Existing Conditions	17
Recommendations	60
Proposed Projects	61
Maintenance	70
Partnerships	72
Appendix	73

Introduction



Cordova's trail system is a valuable community resource. Trails provide residents and visitors access to a variety of natural environments and offer opportunities for exercise, recreation, subsistence, and many other activities. Trails near town present readily accessible options to take a walk and enjoy nature and allow visitors to easily experience the spectacular scenery around Cordova. Trails outside of the immediate downtown area can be accessed by biking, walking, or driving.

Cordova's trails range from gentle shoreline strolls to strenuous alpine hikes and offer opportunities for a variety of experience levels and interests. Many of the trails within this system are multi-use including hiking, skiing, snowshoeing and biking. Motorized use including ATV and snow machine are allowed on some of the trails within the planning area. Cordova's tradition of respecting the rights of each group's use of these trails and common courtesy make for a friendly and safe outdoor experience.

The community has expressed a strong desire for greater connectivity between existing trails. Diverse user groups aim for safe corridors that link existing trails and popular destinations. As Cordova changes and grows it is important to maintain paths for travel around the community. The purpose of this document is to record each of these trails and develop a management plan to ensure the basic trail infrastructure is safe, usable, and the best it can be. Priorities are based upon public comment and the desire for safe, enriching outdoor experiences. Proposed projects are based upon improving user safety and trail connectivity and addressing the needs of underserved users.

Executive Summary

Plan Purpose

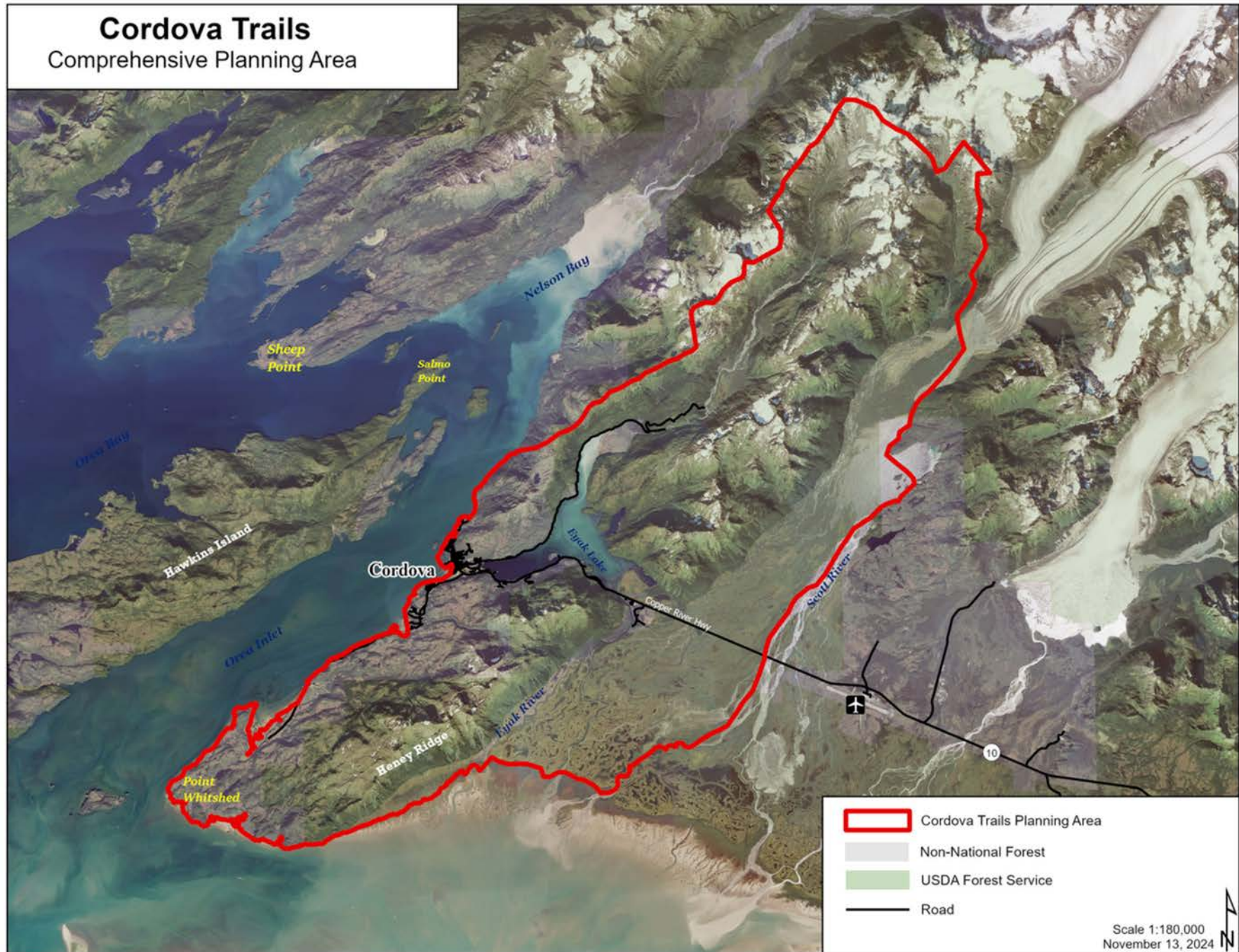
The area outlined in red highlights the planning area for the Cordova Trails Plan (CTP). At the northern edge, the area includes Power Creek Trail, and at the southern end follows the trails off Whitshed Road.

The area currently includes a total of 18 formal trails comprising nearly 40 miles of maintained trails. There are multiple landowners across the planning area, namely US Forest Service, Eyak Corporation, State of Alaska, and the City of Cordova.

The CTP is a concerted effort that brought the community together for a holistic conversation about the future of Cordova's Trail System. The CTP is a guiding document for the community, local trail and covered space organizations, government agencies, and elected officials that defines the Cordova trail network and identifies projects that are supported by the community. The CTP is a framework with community-developed values, vision, and goals that local officials and partner organizations can use to make investment and project decisions.

The CTP provides an overview of the existing trail system and summarizes community input, key themes, and needs. It also identifies both broad aspirations and specific implementation actions to guide projects that will achieve the trail system that Cordova envisions.

Executive Summary



About Cordova

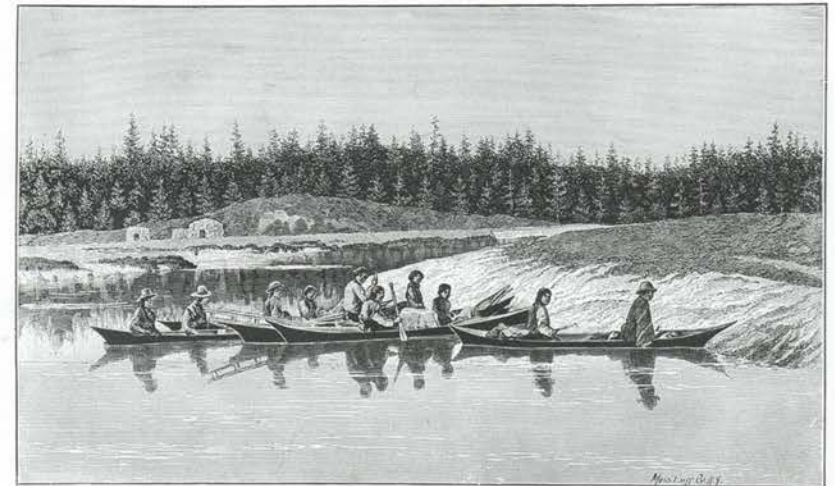
Trail History

Cordova's first inhabitants, the indigenous Eyak people (**dAXunhyuu**), were also the first trail blazers. They made trails for subsistence and cultural reasons (food, shelter, clothing, art, trade, and gatherings) where there were no waterways. Some of Cordova's most spectacular trails undoubtedly retrace the paths of these hunter-gatherer-hikers.

The town site of Cordova owes its founding to the discovery of Copper in Kennecott, Alaska and the subsequent construction of the Copper River and Northwestern Railway in 1910. The Copper River Railway route, which ran south down the Copper River, was arguably the first post-contact "trail" in Cordova, which people used to access trapping, hunting, and fishing. Eventually, the railroad became the Copper River Highway. Concurrently, the Chugach National Forest was created in 1907, and was initially headquartered in Cordova.

Local trails often began as access to local resources. The Eyak River Trail was first tread by salmon-seeking Eyaks, and in 1934 was extended to Crystal Creek Cannery. The trail to Ohman Falls (named after Oscar Ohman) was scouted for early hydropower efforts and led to today's Power Creek Trail and cabin; The Eyak Mountain Trail was originally built in 1937 to ferry tourists to a spectacular viewpoint atop what is now the Ski Hill. The Meals Reservoir Trail was first a winter skiing trail as early as the 1920s and later became access to the town water reservoir and year-round hiking. A notable era of trail-building in Cordova began in 1937 when the Conservation Civilian Corp (CCC) built the Eyak Mountain Trail and the first rendition of the Crater Lake Trail. In Cordova, hundreds of CCC men were employed.

The modern era of trail-building and maintenance has primarily been spearheaded by the Cordova District office of Chugach National Forest. However, this has been aided by large amounts of volunteer effort, including the Appalachian Mountain Club, the Student Conservation Association, the Copper River Watershed Project and more recently, Alaska Trails. Cordova resident, Mike O'Leary was responsible for the construction of the O'Leary Intertie and the Sheridan Alpine Association has built, and maintains, numerous trails in the Mt. Eyak Recreation Area.



7.—START FROM ALAGÁNIK.

About Cordova

Geography

The Community of Cordova is located in the southeast of Prince William Sound, bordered on the north by the Chugach mountains and surrounded by Chugach National Forest. The town itself is located in a valley between the Chugach mountains and Heney Ridge, and between Orca Inlet (Prince William Sound), and Eyak Lake, a large freshwater lake. Directly to the east of Cordova is the Copper River Delta, a 35 square mile wetland complex providing critical habitat for migratory birds, salmon, and numerous other species of wildlife. The Copper River Delta is an important staging area for the western shorebird migration. Cordova and vicinity are the ancestral homeland of the Eyak **dAXunhuu** ("the people")

The town is accessed via daily air service and the Alaska Marine Highway. City and State-maintained roads connect the residents of Cordova. The Copper River Highway (AK-10) begins at the Alaska Marine Highway Terminal and passes through downtown Cordova continuing east across the Copper River Delta, past Merle K. Mudhole Smith Airport at mile 13 and ending at mile 36. Prior to the Copper River shifting course and the ensuing erosion, the highway terminated at mile 50 at the Million Dollar Bridge where it crosses the Copper River between the Miles and the Childs Glaciers. The Forest Service still maintains a campground at mile 50 which is accessible by small plane or jet boat.



Cordova supports commercial fishing, sport fishing, and subsistence fishing with salmon spawning occurring in intertidal streams, Eyak Lake and streams, lakes and sloughs on the Copper River Delta. The town is located within a coastal, temperate rainforest extending up to subalpine and alpine ecosystems. There is a small ski area and there are helicopter skiing companies which operate out of Cordova in February and March. A Coast Guard cutter is stationed in Cordova and there is a Coast Guard air base at the Merle K. Smith Airport.

About Cordova



Flora and Fauna

Cordova lies at the nexus of a rich marine environment, lush rainforests, and a massive coastal wetland. Several trails span from sea level to the tops of mountains, allowing the trail user to immerse themselves in the diverse offerings of the terrestrial ecosystem's characteristic of the area.

Starting near sea level, several trails follow streams and provide an up-close look at where the sea meets the trees. Salmon race up these systems in the summer months, providing a spectacular show of marine derived nutrients making their way into the bellies of brown bears, eagles, and other opportunistic critters. The output from these encounters nourish the surrounding vegetation, providing nutrients for the towering Sitka spruce and western hemlock trees, and productive blueberry and salmonberry shrubs.

Peatlands break up the dense forests, providing an opening for sun and a splash of plant diversity. Notable species include orchids, arnica, fleabane, and buckbean. Sundews and butterworts dot the sphagnum moss, slowly ingesting unlucky insects to get much needed nitrogen.

Above tree line, dwarf mountain hemlock intermix with ericaceous dwarf shrubs such as bearberry and lichen. The zone above tree line offers stunning views of the dramatic surrounding landscape.

The rich ecosystem supports a varied population of mammals including robust populations of brown and black bears and moose. Beavers are abundant on the coastal wetlands and their activities shape the environment. Coyote, mountain goats, and numerous smaller mammals live in the Cordova area. The dusky goose (a subspecies of the Canada goose) breeds on the Copper River Delta along with shorebirds, ducks, and trumpeter swans. Harbor seals are occasionally spotted in Eyak Lake and sea otters are found along the Orca Inlet shoreline.



About Cordova

Age

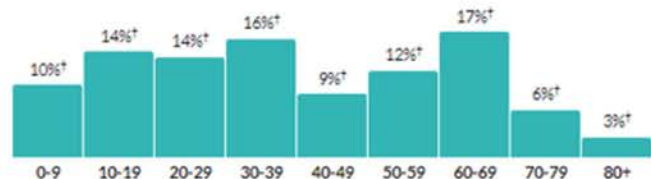
36.9

Median age

about the same as the figure in
Chugach Census Area: 37.8

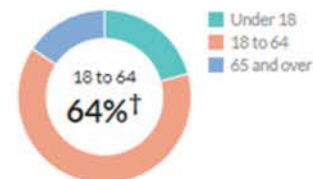
a little higher than the figure in
Alaska: 35.3

Population by age range



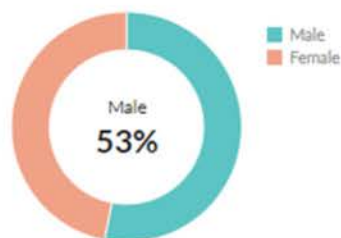
Show data / Embed

Population by age category



Show data / Embed

Sex



Show data / Embed

Race & Ethnicity



* Hispanic includes respondents of any race. Other categories are non-Hispanic.

Show data / Embed

<https://censusreporter.org/profiles/16000US0217410-cordova-ak/>

Economy

Cordova's economy relies heavily on commercial fishing and supports a large fishing fleet and several fish processing plants. The town's population doubles in size each fishing season as cod, halibut, and salmon are harvested. Fish harvesting and processing provide jobs to over half of the households in Cordova. The retail industry, public administration, science, and environmental organizations, healthcare and social assistance, recreation and tourism, all provide employment and add to the economy of Cordova.

Transportation

Cordova is accessed by airplane or boat. Daily scheduled jet flights and air taxis are available. It is linked directly to the North Pacific Ocean shipping lanes through the Gulf of Alaska. It receives year-round barge services and State ferry service. Harbor facilities include a breakwater, dock, small boat harbor, boat launch, boat haul-out, ferry terminal, and marine repair services. A 36 mile road, which includes 24 miles of gravel, provides access to the Copper River Delta.

About Cordova

Health and Wellness

Health and Wellness

New evidence of the healing powers of time spent out-of-doors appears almost daily in news articles and medical and scientific journals. The health benefits of being in parks, green spaces, and in the natural environment are extensive and well documented across every age, class, gender, and ethnic group.

Outdoor activities increase mental and emotional well-being, measurably improve the function of human body systems and significantly reduce overall stress and anxiety.

Seasonal Affective Disorder (SAD) is caused from a lack of direct sunlight. It is particularly prevalent in Cordova during the winter and during long, rainy spells. Because of this, it is extremely important for Cordovans to have easy and nearby access to sunny areas when the weather permits.

Underserved Needs

An underserved need in Cordova is a lack of trails available to people with limited mobility. There are no Americans with Disabilities Act (ADA) accessible trails and very few well-graded and level trails for those with strength and balance issues, those recovering from illnesses, or caregivers with toddlers.

Another underserved need is trails for people who have limited time or lack transportation to access trails further from the center of town. For office and business workers, the ideal time to get outside is on their lunch break, particularly during the winter when daylight hours are very short. There is a large influx of seasonal workers in the summer, most of whom lack transportation but show a desire to use our trails when they have time off. Many tourists who come to Cordova in the summer also lack transportation. Improving and extending the trail system near the downtown area would help address these underserved needs.

Existing Plans

Listed below are existing plans on the local, state, and federal levels that all address the need for well-designed, sustainable trails systems, their beneficial effect on the health and well-being of community members and the economic benefits engendered by well-developed trail systems. Some of the existing plans include the USFS 2017 National Trail Strategy, the 2023-2027 Statewide Comprehensive Outdoor Recreation Plan, the City of Cordova Comprehensive Plan, the City of Cordova Parks and Recreation Master Plan, and the Sheridan Alpine Association plans for the Mt. Eyak Ski Area.

These plans range from general benefits and goals to specific ideas, as seen in the City of Cordova Comprehensive Plan which was adopted in 2019. The Parks and Recreation Commission is in the process of developing a new 20-year Master Plan, as the current plan was written in 2000. Because the Cordova Trails Committee works under the auspices of the Parks and Recreation Commission, and there is a representative of the Commission at the Trails Committee meetings, this plan should dovetail nicely with the Parks and Recreation Commission Master Plan under development. The Trails Committee is also working closely with the Sheridan Alpine Association, which oversees the Mt. Eyak Ski Area, in order to coordinate plans. It is expected that the Cordova Comprehensive Trails Plan will be adopted by the City of Cordova and become part of the overall planning for the City.

Cordova Comprehensive Plan 2019

<https://www.cityofcordova.net/cordova-comprehensive-plan/>

USFS 2017 National Trail Strategy

<https://www.fs.usda.gov/managing-land/trails/national-strategy>

USFS 10 yr Trail Stewardship Challenge

<https://www.fs.usda.gov/managing-land/trails/10YTC>

2020 Chugach National Forest Land Management Plan

<https://www.fs.usda.gov/detail/chugach/landmanagement/planning/?cid=stelprdb5408185>

Alaska 2023 - 2027 Statewide Comprehensive Outdoor Recreation Plan

<https://dnr.alaska.gov/parks/scorp.htm>

Overview of Planning Process



Planning Team

City of Cordova Parks & Rec; Cordova Trails Ad Hoc Committee

2018-2021

Cordova Trails Committee activities prior to NPS Grant Award

April 8, 2021

The National Park Service (NPS) is pleased to announce an award of technical assistance to the Organizational Framework for the Cordova Trails Committee project for RTCA project year 2021 (May 2021 through December 2024).

July 2021

Assess existing trails and conditions

January 2022 - October 2022

Values, Mission, Vision, Goals, Stakeholder Assessment; Public Outreach; Drafting Plan

Summer 2022 - Public Outreach Phase 1

Letter to land managers; Newspaper Announcements; Public Flyer and Online Surveys; Tabling at Local Events

Fall 2022 - Public Outreach Phase 2

Open House Meeting; Survey; Interactive Map; Meeting with Land Managers

Spring 2023 - Public Outreach Phase 3

March 2023

Design Charrette in Cordova attended by RTCA, Nancy Casey, Cordova Trails Ad Hoc Committee; Cordova Parks and Rec, Sheridan Alpine Association. Site walks to proposed covered shelter locations and proposed ski hill trails.

Summer 2023

Cordova Trails Committee meeting 7/21/2023. Trails assessment.

Fall/Winter 2023/2024

Cordova Trails Committee review/edit of draft plan

Spring/Summer/Fall/ Winter 2024

Final Draft Plan edits

Winter 2024/2025

City of Cordova Parks and Recreation Commission plan review

Winter/Spring 2025

Cordova City Council review and plan adoption

Values, Mission and Vision

Community: We embrace the inclusive and diverse community of Cordova.

Stewardship: We steward our assets and resources thoughtfully.

Opportunity: We create opportunities to connect places, people, ideas, and resources.

Kinship with Life: We embody the instinctive need to seek out natural places for rejuvenation and connection.

The Mission of the Cordova Trails Committee is to create, enhance, maintain, and fund a community-driven, inspiring, and varied trail system for the benefit of all Cordovans and visitors.

The Vision is to have an inclusive, holistic, and well-managed local trail system that meets the diverse needs of the Cordova community and fosters connections through shared stewardship.



Goals

Goal 1: More and Better Trails

Priority is given to finish existing trails, expand existing trail system, improve connectivity between trails, and construct new trails.

Goal 2: Inclusive Trails

Increase trail accessibility for all user groups.

Goal 3: Partnership and Collaboration

Establish successful collaboration with community stakeholders for the stewardship of Cordova's trail system by working with landowners and stakeholders. Accommodate community desires and encourage community support. Establish a work plan, organize volunteer groups, and advocate trail use through tourism.

Goal 4: Trail Organization, Management, and Maintenance

Facilitate a governance group charged with the oversight, implementation, and management of Cordova's trail system. Develop consistent design & classification standards, wayfinding, and signage for existing and new trails. Establish sustainable trail management (sustainable trail construction/design, workforce, funding), and maintain a trail inventory document.

Goal 5: Funding

Identify and secure the financial resources to maintain, expand, and develop Cordova's trail system now and into the future. Create a 5-year plan including maintenance and identify funding sources. Keep a record of funding opportunities, create documents to help apply for grants, and develop an associated filing system for all trail documents.

Existing Conditions

Trail Users

Hikers

Cordova is a hiker and backpacker friendly destination. The trail system is easily accessible from town. Cordova's trail systems offer a wide variety of options for hikers of all abilities. The trails access coastline, lakes, and a variety of ecosystems including temperate, sub alpine, and alpine. There is something for everyone! Climbers, paddlers, and ice skaters also utilize the trail system to access peaks, lakes, and rivers.



Bicyclists

The needs of trail bicyclists vary based on their experience and familiarity of the trail network. Casual trail bikers might prefer a wide trail that allows passing and side-by-side riding. Bikers may also prefer smooth, compact surfaces or paved surfaces with gentle to minimal slopes. Aggressive trail bikers, on the other hand, might enjoy more challenging trail experiences including the thrill of a narrow, single track trail, just wide enough to allow passage of one bicycle.

ATV (All-Terrain Vehicles)

OHV (Off-Highway Vehicles)

In Cordova, All-Terrain Vehicles (ATVs) and motorcycles that are not licensed for use on the highways are the predominant off-road vehicles used. In most areas where ATVs are allowed, the organic material is 6-12 inches thick and acts as topsoil, beneath which lies a rocky gravel base. Due to their contribution to erosion and effect on plant life, trails supporting ATV use can most benefit from a sustainable layout, surface hardening where required, and natural features that help to maintain trail alignment, while minimizing impacts on surrounding resources.

Existing Conditions

Trail Users



Skiers and Snowboarders

Cross-country skiing and alpine and back-country skiing and snowboarding are primary forms of winter recreation and will continue to grow as trails expand and grooming efforts improve. There are several areas being proposed for trail expansion and establishment. There is world class back-country skiing in and around Cordova and a desire from the back-country community for increased and enhanced access areas within Cordova.

Alpine, cross-country skiers and snowboarders are served by Mt. Eyak Recreation Area, which offers single-chair lift access to a variety of terrain, including groomed trails and a rope tow for beginners. There are also groomed loops for cross-country skiers at the base of the ski hill. Back-country skiers and snowboarders have many options around Cordova, but most commonly access areas above Mt. Eyak Recreation Area.

Snowmachiners

Snowmachiners technically do not require actual trails to operate. General routes have been developed over time, though these routes change frequently due to conditions.

Snowshoers

Snowshoers use existing trails for recreation in addition to using them for access to the backcountry.



Existing Conditions

Trail Amenities

Trailhead and trailside amenities contribute to the overall user experience of the trail. Amenities include a wide array of constructed features including everything from trail signs and benches to overlooks and restroom facilities.

Most trails provide amenities at the trailhead where the public can park a vehicle, find trail and orienteering information, trash receptacles, and restroom facilities. However, trail amenities can be found anywhere along a trail.

Existing amenities on Cordova's trail system include vehicle parking, restrooms, trash receptacles, signage and information kiosks, overlooks, and public use cabins.

What amenities are provided depends on the needs of current and potential user groups. Research, public input, and this plan will guide trail managers to identify what trailhead and trail corridor amenities would best serve current and anticipated trail users.



Existing Conditions

Trail Classes are general categories reflecting a trails development, arranged along a continuum. The Trail Class identified for the Cordova trail system prescribes its development scale, representing its intended design and management standards. Deviations from any Trail Class descriptor may be established based on trail-specific conditions, topography, or other factors, provided that the deviations do not undermine the general intent of the applicable Trail Class. This matrix is based on the established system used by the United States Forest Service (USFS).



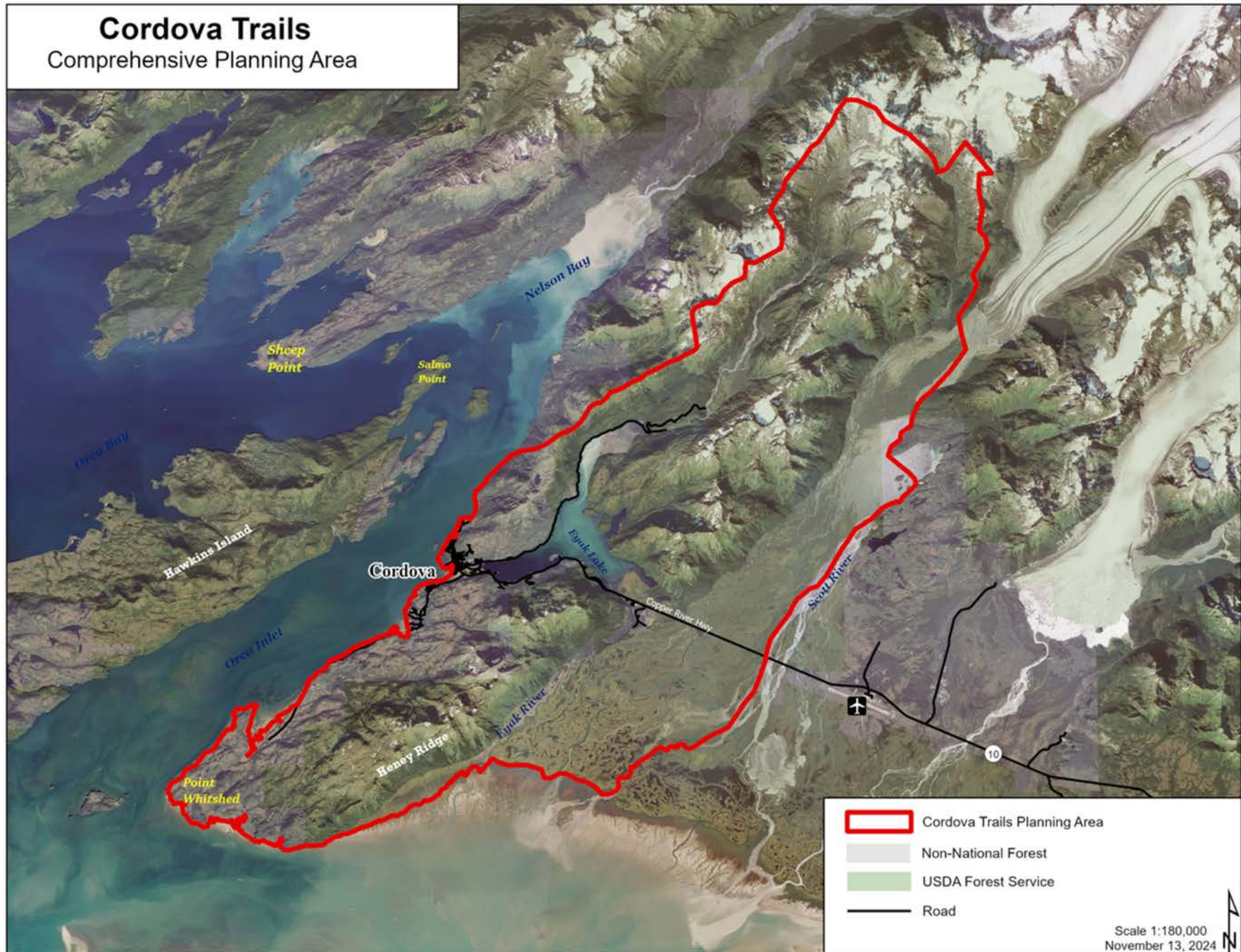
Existing Conditions

The area on the map on the next page, outlined in red, highlights the planning area for the Cordova Trails Plan. At the northern edge, the area includes Power Creek Trail, and at the southern end follows the trails off Whitshed Road.

The area currently includes a total of 18 formal trails which comprise nearly 40 miles of maintained trails. There are multiple landowners across the planning area, including US Forest Service, Eyak Corporation, State of Alaska, and the City of Cordova.

Below, each of the 18 trails are outlined in more detail with trail data and a supporting map.

Existing Conditions



Existing Conditions

Definitions of Trail Uses (As defined by the USFS)

Managed Use:

Managed Use is a mode of travel that is actively managed and appropriate on a trail, based on its design and management intent.

- Managed Use indicates management intent to accommodate a specific use.
- There can be more than one Managed Use per trail or trail segment.
- The Managed Uses for a trail are usually a small subset of all the allowed uses on the trail, that is, uses that are allowed unless specifically prohibited.
- There is a direct relationship between Managed Use and Trail Class: generally, one cannot be determined without consideration of the other. Not all Trail Classes are appropriate for all Managed Uses.

Designed Use:

Designed Use is the single Managed Use of a trail that requires the most demanding design, construction, and maintenance parameters and that, in conjunction with the applicable Trail Class, determines which Design Parameters will apply to a trail.

- There is only one Designed Use per trail or trail segment. Although a trail or trail segment may have more than one Managed Use and numerous uses may be allowed, only one Managed Use is identified as the design driver or Designed Use.
 - In some situations, when there is more than one Managed Use identified for a trail, the Designed Use may be readily apparent. For example, on a trail with Managed Uses of all-terrain vehicle and motorcycle, all-terrain vehicle use would be the Designed Use because this use requires wider tread widths and has lower tolerances for surface obstacles and maximum trail grades.
 - In other situations, involving more than one Managed Use, the Designed Use may not be readily apparent, as is often the case when there are fewer differences between the applicable sets of Design Parameters than in the example above. For example, on a trail that is actively managed for hiker and pedestrian, pack and saddle, and bicycle use, pack and saddle use would likely be the Designed Use because of the three Managed Uses, pack and saddle use generally has the most limiting design requirements. While the Bicycle Design Parameters are very similar to the Pack and Saddle Design Parameters, the Design Parameters for this trail may need to be adjusted to accommodate bicycles.

Current Use:

Current Use is the existing modes of travel the public are presently using on a trail. These are uses occurring on the trail regardless of the designed use or managed use.

Existing Conditions

Breakwater Trail

The Breakwater trail provides excellent views of the town of Cordova, its harbors, the surrounding mountains and islands, and sea and bird life. The trail starts at the beginning of the breakwater near the Veterans Memorial where there is a bench and garbage receptacle. The 3-foot-wide trail allows pedestrians to walk along the harbor's edge, ending with interpretive signage from Cordova Parks and Recreation Department and a bench for visitors to use. The trail is near Cordova's amenities, as well as harbor restroom facilities. The maintained trail ends before the breakwater turns towards the northeast, at 0.25 mi.

Location	Trail starts at the south end of the South Harbor
Land Ownership	City of Cordova
Management Agency	City of Cordova (Parks and Rec. Dept.)
Trail Length	.23 mile
Elevation Gain	0 ft
Min/Max Altitude	0 ft
Trail Type	Terra
Class	4
Current Use	Pedestrian
Designed Use	Pedestrian
Managed Use	Pedestrian
Trail Facilities	Picnic table and garbage receptacle at trail head; information kiosk and bench at end of trail; bathrooms at the harbor office

Existing Conditions

Cordova Trails Plan

Breakwater Trail



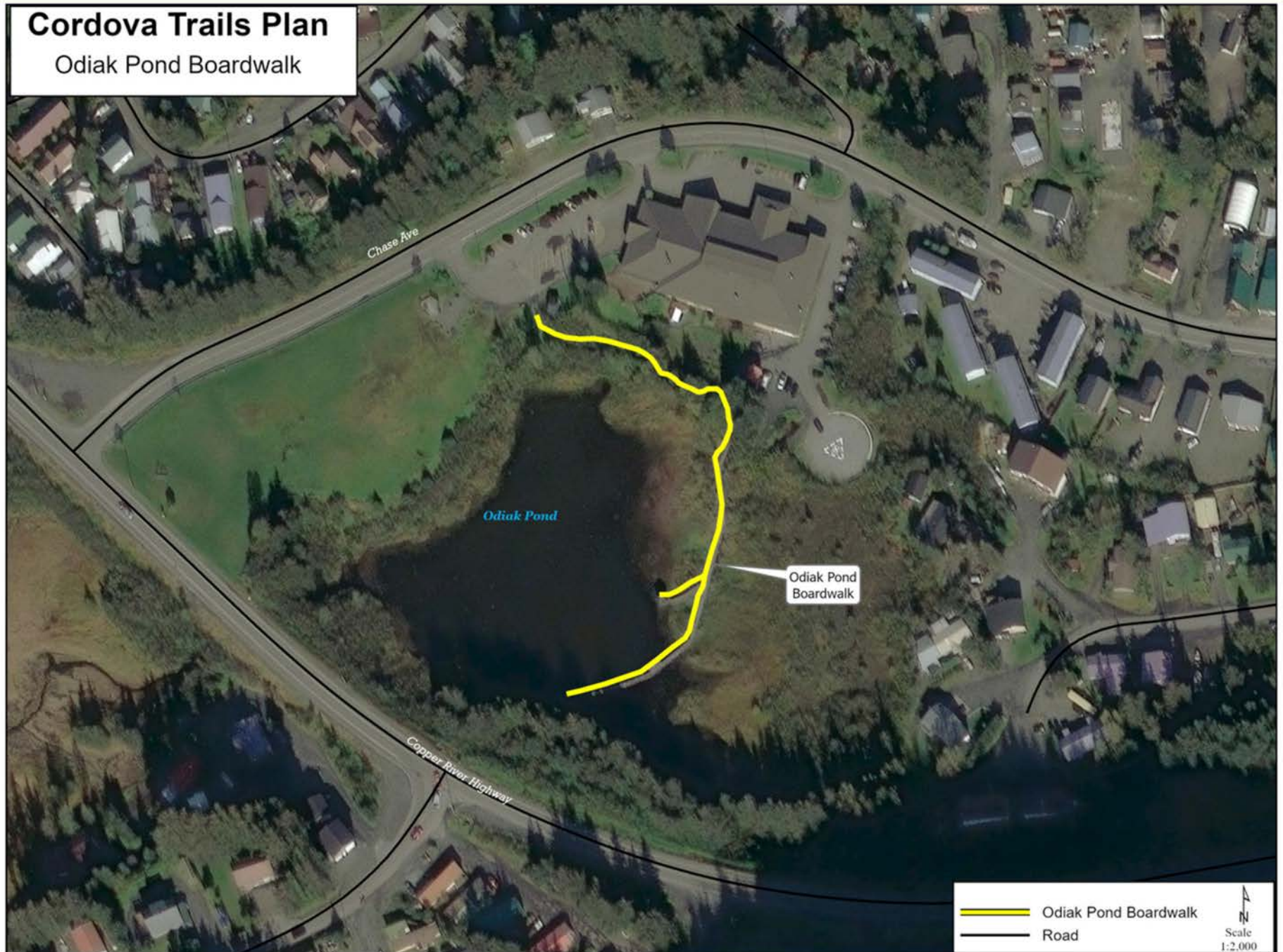
Existing Conditions

Odiak Pond Boardwalk

This out-and-back boardwalk trail takes visitors across Odiak Pond, walking over wooden boardwalks at the northeast corner of the pond after about 400ft of walking through the wooded area south of Cordova Community Medical Center. A covered pavilion at the center of the walk provides great viewing for pond-life, including birds, and features a picnic table for visitor use. The trail begins on the north side of Hollis Henrichs Park. Park facilities, including two restrooms, are provided at the trailhead.

Location	Trail starts at Hollis Henrichs Park off Chase Avenue next to the Cordova Community Medical Center parking lot.
Land Ownership	City of Cordova
Management Agency	City of Cordova (Parks and Rec. Dept.)
Trail Length	.18 mile (one-way)
Elevation Gain	25 ft (total out and back)
Min/Max Altitude	Min. 20 ft; Max. 45 ft
Trail Type	Boardwalk
Class	5
Current Use	Pedestrian
Designed Use	Pedestrian
Managed Use	Pedestrian
Trail Facilities	Parking lot; restroom facilities; information kiosk; bench; covered pavilion; picnic table

Existing Conditions



Existing Conditions

Eyak Mountain Trail

This historic trail begins where town meets the forest, passing through a mature spruce-hemlock forest before reaching open muskeg fields with stunning views of Cordova Harbor and Eyak Lake. The trail is a consistent, steady climb over rocks and roots, often crossing small inlets of flowing water. The trail crosses the CAT Route and continues on to the top of the ski hill. Eyak Mountain Trail can be combined with the trails of the Mt. Eyak Recreation Area and further on to the Eyak Peak Trail, O'Leary Intertie Trail and Crater Lake trail for a more challenging loop.

Location	Trail starts off 5th Ave.
Land Ownership	State of Alaska
Management Agency	City of Cordova (leased)
Trail Length	1 mile
Elevation Gain	971 ft
Min/Max Altitude	Min. 236 ft; Max. 1207 ft
Trail Type	Terra
Class	3
Current Use	Hiking, Biking
Designed Use	Hiking
Managed Use	Hiking
Trail Facilities	Parking lot; information kiosk

Existing Conditions



Existing Conditions

Mystery Meadows Trail System

This winter trail system is located at the base of the Mt Eyak Ski Area, beginning and ending on the west side of the chairlift. Snow conditions permitting, the cross-country trail system consists of 12-foot wide gentle, undulating, corduroy loops. It circles or borders ponds and meadows in the area. A popular area that is easily accessed by the community, this winter trail provides sunny winter access to flat or gentle terrain. Historically, this has been a cross-country trail, which was initially groomed around 1988. This area receives frequent use with or without snow. Damage to the muskeg is present in some areas.

Location	Base of Mt Eyak Ski Area
Land Ownership	State of Alaska
Management Agency	City of Cordova (Sheridan Alpine Association)
Trail Length	Varies by loop
Elevation Gain	Varies by loop
Min/Max Altitude	Min. 400 ft; Max. 440 ft
Trail Type	Terra
Class	3
Current Use	Cross-country skiing, Snowshoeing, Walking, Dog walking
Designed Use	Cross-country skiing
Managed Use	Cross-country skiing
Trail Facilities	Parking lot; restrooms

Existing Conditions

Cordova Trails Plan

Mystery Meadows Ski Trails



Existing Conditions

Hidden Valley Trail

Originating at the Mt Eyak Ski area base, this gravel trail accesses a part of the Hidden Valley and the Hidden Cabin, maintained by Sheridan Alpine Association (SAA). The cabin can be reserved through the SAA and is accessible year-round. It includes an outhouse, firewood, and the cabin facility.

Location	Base of Mt Eyak Ski Area
Land Ownership	State of Alaska
Management Agency	City of Cordova (lease); Sheridan Alpine Association
Trail Length	0.46 mi
Elevation Gain	180 ft
Min/Max Altitude	Min. 410 ft; Max. 590 ft
Trail Type	Snow and Terra
Class	3
Current Use	Hiking; Skiing, Snowshoeing
Designed Use	Hiking; Skiing, Snowshoeing
Managed Use	Downhill ski run and cabin access trail
Trail Facilities	Cabin; outhouse; parking lot; ski hill amenities

Existing Conditions



Existing Conditions

CAT Route

This route is maintained by the Sheridan Alpine Association (SAA) to serve maintenance needs in both summer and winter. It is open to visitors and provides great views of both Orca Inlet and Mt Eyak from the top of Tripod Hill. The route is a fully gravel surface, bringing walkers to the top of the Mt Eyak chairlift and the warming shelter. Users can find a picnic table at the summit of Tripod Hill for public use and great 360-degree views. The trail is used by downhill skiers, snowboarders, and snowshoers in the winter and by hikers and bikers in the spring, summer, and fall.

Location	Base of Mt Eyak Ski Area
Land Ownership	State of Alaska
Management Agency	City of Cordova (lease); Sheridan Alpine Association
Trail Length	0.59 mi
Elevation Gain	797 ft
Min/Max Altitude	Min. 410 ft; Max. 1207 ft
Trail Type	Snow and Terra
Class	3
Current Use	Downhill skiing, Hiking, Biking, Snowboarding, Snowshoeing
Designed Use	Downhill ski run and maintenance route
Managed Use	Downhill ski run and maintenance route
Trail Facilities	Single seat chairlift; parking lot; ski hill amenities

Existing Conditions



Existing Conditions

Mambo Ski Trail

This wide ski route leads up over rocky slopes that offer a great view of Eyak Lake and Orca Inlet. A little less than $\frac{3}{4}$ of a mile, the trail ends at Midway Shack where you can adventure towards the top of Tripod Hill. The trail is designed for winter use but during the other seasons you can see residents and visitors hiking and biking up the trail. Sheridan Alpine Association maintains the trail throughout the year and when snow is not on the trail, it has sections of gravel, dirt, and woodchips with moderate to steep incline.

Location	Base of Mt Eyak Ski Area
Land Ownership	State of Alaska
Management Agency	City of Cordova (lease); Sheridan Alpine Association
Trail Length	0.67 mi
Elevation Gain	637 ft
Min/Max Altitude	Min. 410 ft; Max. 1047 ft
Trail Type	Snow and Terra
Class	3
Current Use	Downhill skiing, Hiking, Biking, Snowboarding, Snowshoeing
Designed Use	Downhill ski run
Managed Use	Downhill ski run
Trail Facilities	Single seat chairlift; parking lot; ski hill amenities; picnic table at Midway Station

Existing Conditions



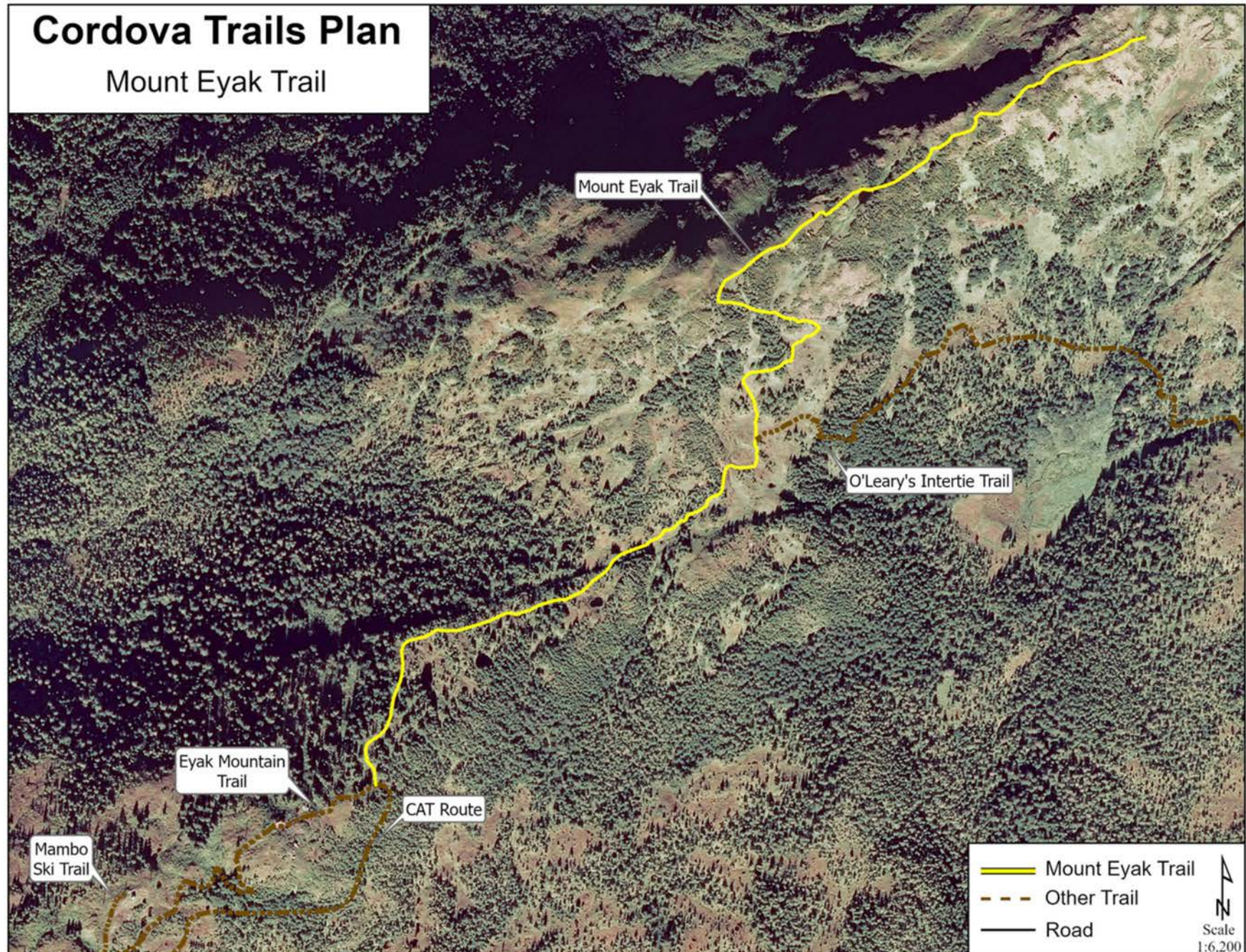
Existing Conditions

Mount Eyak Trail

This trail leads hikers uphill from the top of the chairlift over open rocky slopes, muskeg meadows, and spruce forest while offering incredible views of Orca Inlet and Eyak Lake. The last quarter mile of the trail is a rock scramble to the top of Mount Eyak providing excellent panoramic views. The first half of this trail provides skiers with back country skiing and snowboarding access.

Location	Top of chairlift at Mt Eyak Ski Area
Land Ownership	State of Alaska
Management Agency	City of Cordova (leased); Sheridan Alpine Association
Trail Length	1.95 mi
Elevation Gain	1096 ft
Min/Max Altitude	Min. 1207 ft; Max. 2303 ft
Trail Type	Terra
Class	3
Current Use	Hiking
Designed Use	Hiking
Managed Use	Hiking
Trail Facilities	none

Existing Conditions



Existing Conditions

O'Leary's Intertie Trail

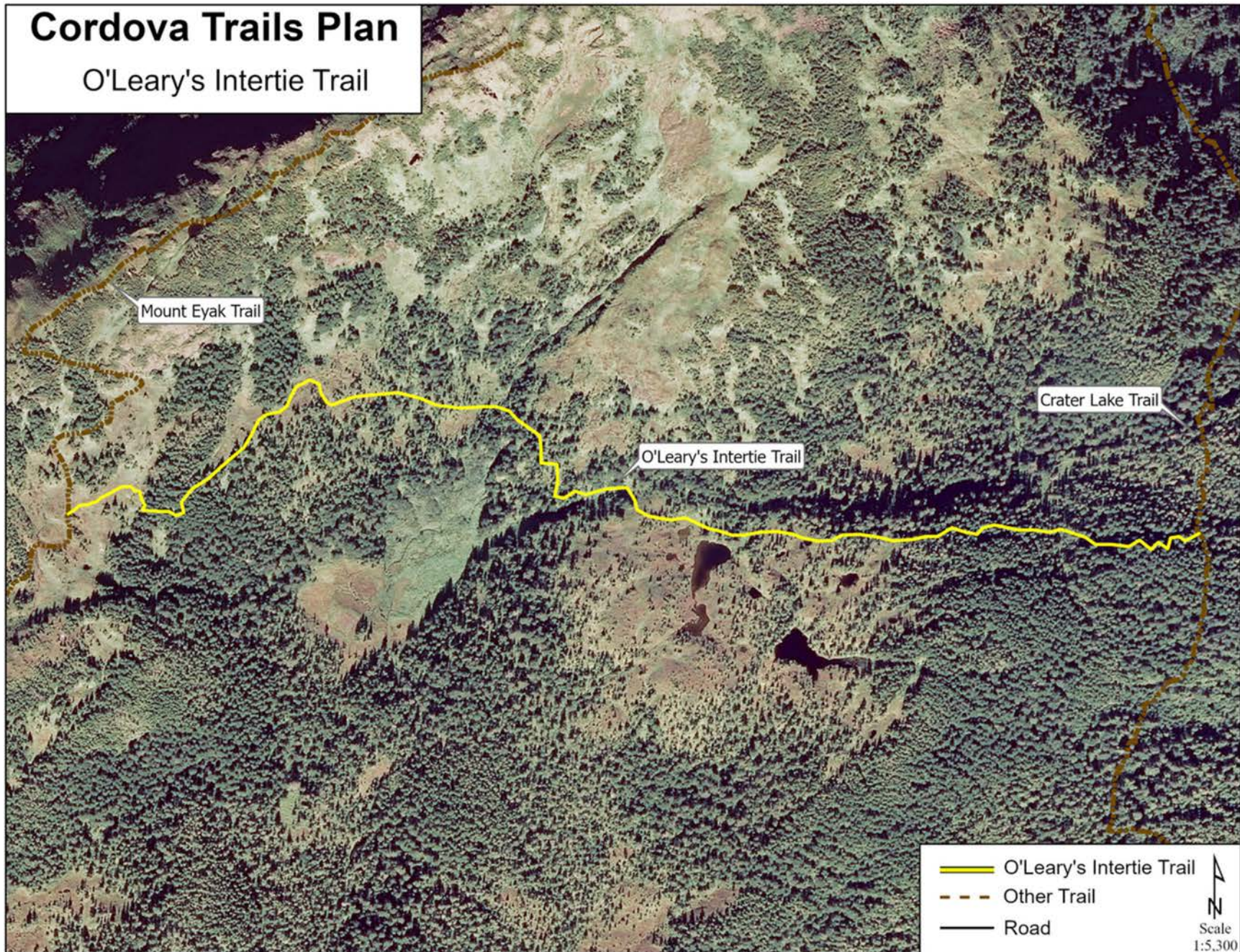
This connector route ties in Crater Lake and Mt Eyak Trail with a larger interconnected trail system. Most hikers travel O'Leary's Intertie from east to west starting at mile 1.3 of Crater Lake Trail where it leads the hiker up several switchbacks to open muskeg meadows in Sunshine Bowl. The trail continues west maintaining elevation as it passes in and out of Sitka spruce tree bands and open muskeg. There are excellent views of Eyak Peak, Eyak Lake, the Heney Mountain Range, Prince William Sound, and the town of Cordova. The trail eventually connects with Mt Eyak Trail where hikers can continue onto Eyak Peak or down to the many trails throughout the Mt Eyak Ski Area.

Location	Crater Lake mile 1.3 and Mt Eyak Trail mile 0.5
Land Ownership	State of Alaska
Management Agency	City of Cordova
Trail Length	0.96 mi
Elevation Gain	East to West: 523 ft West to East: 136 ft
Min/Max Altitude	Min. 1083 ft; Max. 1529 ft
Trail Type	Terra
Class	3
Current Use	Hiking
Designed Use	Hiking
Managed Use	Hiking
Trail Facilities	Picnic table

Existing Conditions

Cordova Trails Plan

O'Leary's Intertie Trail



Existing Conditions

Crater Lake Trail

This trail begins at the Skaters Cabin vehicle pullout. The trail climbs a steep grade passing through mature spruce-hemlock forest to a picturesque alpine bowl where Crater Lake sits. The first half climbs over rough, rocky sections with numerous switchbacks, and muddy areas as well as wood bridges. The second half continues to climb, but at a gentler grade, through hillsides that are abundant with wildflowers during the summer months. A bench is provided midway up the trail for a great view of Eyak Lake. At 1.2 miles, O' Leary Intertie Trail provides access to the Mount Eyak Trail. At Crater Lake, the hiker has the option to access the Alice Smith Intertie or climb Eyak peak.

Location	Power Creek Road Mile 1.5
Land Ownership	State of Alaska
Management Agency	USFS
Trail Length	2.4 mi
Elevation Gain	1423 ft
Min/Max Altitude	Min. 97 ft; Max 1520 ft
Trail Type	Terra
Class	3
Current Use	Hiking, Skiing, Snowshoeing
Designed Use	Hiking, Skiing, Snowshoeing
Managed Use	Hiking, Skiing, Snowshoeing
Trail Facilities	City of Cordova Skaters Cabin; garbage receptacle; overlook with bench; vault toilet

Existing Conditions



Existing Conditions

Power Creek Trail

This trail follows Power Creek through a narrow drainage, then leads the hiker up several switchbacks into Surprise Valley. Midway, at the beginning of Valley, the Cordova Electric Hydropower Dam can be seen. The last half of the trail follows the creek up the Power Creek basin, passing by several beaver ponds and hanging glaciers to the Power Creek Cabin. The cabin site has wonderful panoramic views of the valley and surrounding mountains. At mile 3.0, the Alice Smith Intertie accesses the Crater Lake Trail.

Location	End of Power Creek Road mile 6.9
Land Ownership	USFS
Management Agency	USFS
Trail Length	4.2 mi
Elevation Gain	600 ft
Min/Max Altitude	Min. 197 ft; Max. 614 ft
Trail Type	Terra
Class	3
Current Use	Hiking, Snowshoeing, Cross-country skiing
Designed Use	Hiking
Managed Use	Hiking
Trail Facilities	Parking area; cabin; outhouse

Existing Conditions



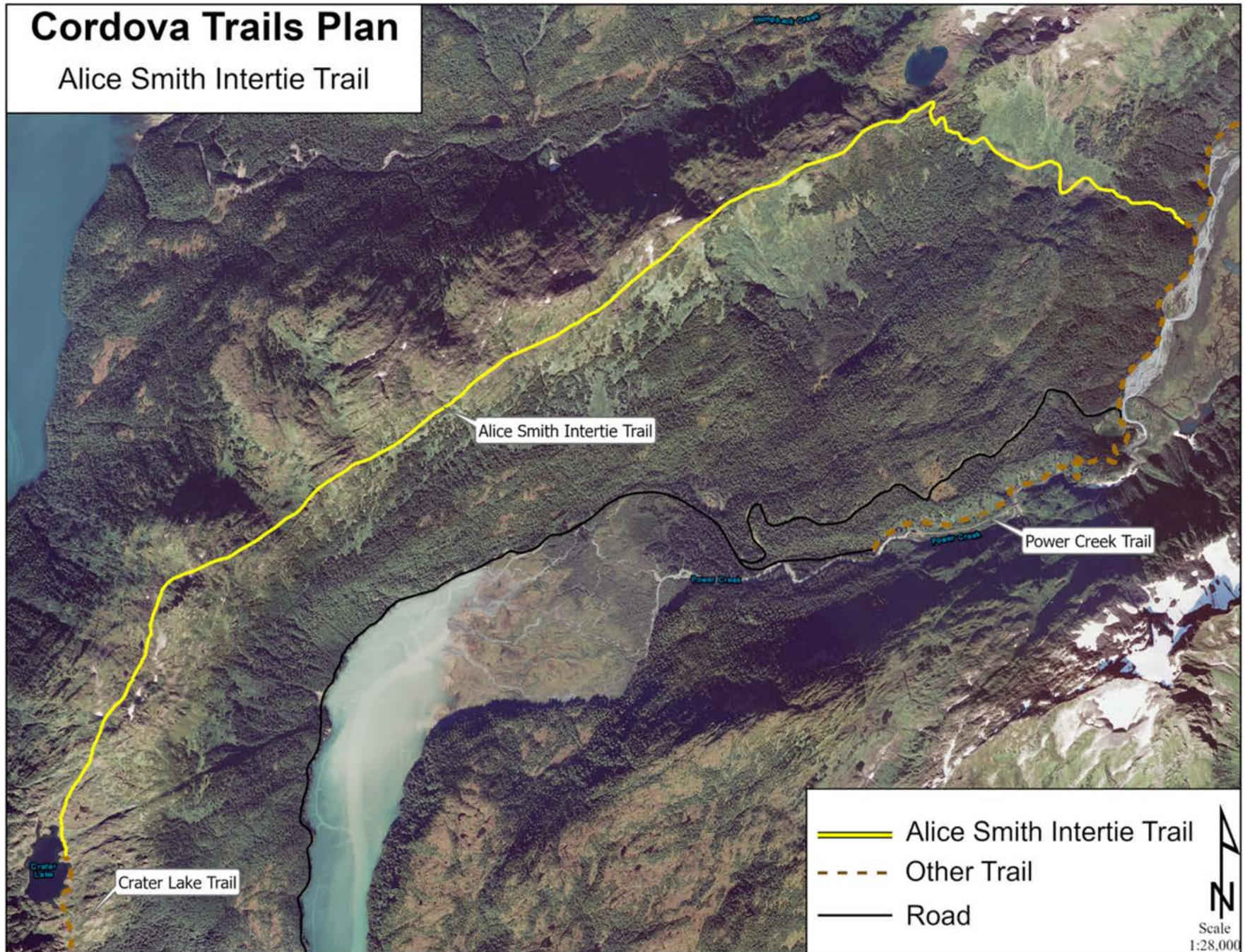
Existing Conditions

Alice Smith Intertie

This ridge route is marked with rock cairns and has extraordinary views of Prince William Sound, Eyak Lake, the Copper River Delta, and the surrounding Chugach Mountains. Approximately halfway on the ridge, a small shelter is available for day-use or overnight camping on a first-come-first-serve basis. There is excellent berry picking along the loop as well as a good possibility of viewing bears and mountain goats. The entire loop from Crater Lake trailhead to Power Creek trailhead is 12 miles.

Location	Power Creek Trail mile 3.0 and End of Crater Lake Trail mile 2.4
Land Ownership	USFS, Eyak Corp.
Management Agency	USFS
Trail Length	6.6 mi
Elevation Gain	2789 ft
Min/Max Altitude	Min. 488 ft; Max. 2060 ft
Trail Type	Terra
Class	3
Current Use	Hiking
Designed Use	Hiking
Managed Use	Hiking
Trail Facilities	Emergency Shelter

Existing Conditions



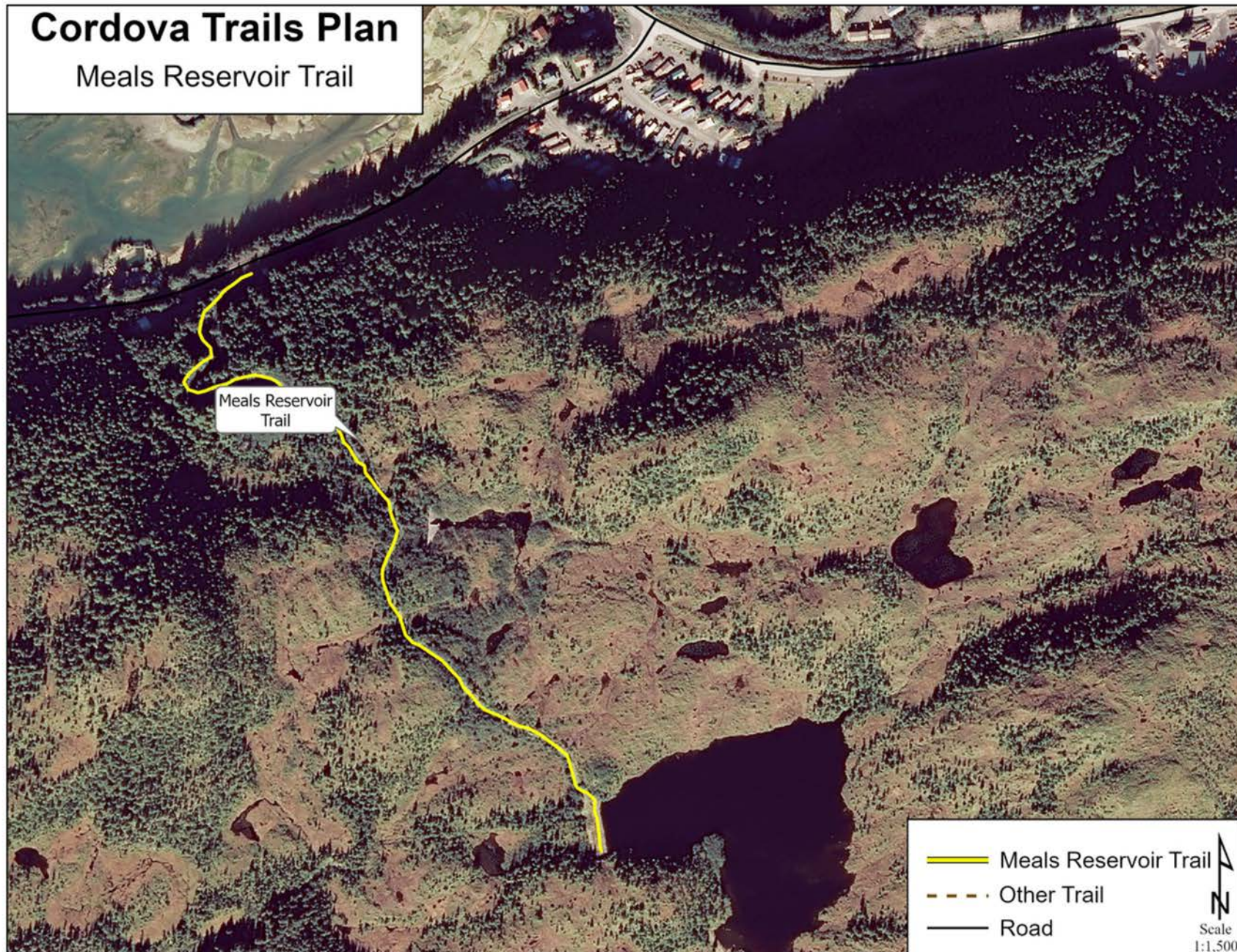
Existing Conditions

Meals Reservoir Access Road

A narrow gravel road brings visitors to the Meals Reservoir, the source of drinking water for the City of Cordova. The maintained road varies from switchbacks and gradual climbs to steep, rocky ascents. The Disc Golf Club has set up a 9-hole disc golf course starting near the dam and winding through the muskeg. The area around the reservoir provides a great sun-exposed spot to recreate overlooking the city and is heavily used by hikers, snowshoers, and dog walkers.

Location	Whitshed Road mile 0.3
Land Ownership	City of Cordova
Management Agency	City of Cordova
Trail Length	0.62 mi
Elevation Gain	316 ft
Min/Max Altitude	Min. 69 ft; Max. 385 ft
Trail Type	Terra
Class	3
Current Use	Hiking, Reservoir maintenance
Designed Use	Maintenance Road
Managed Use	Maintenance Road, Hiking Trail
Trail Facilities	Small parking lot off Whitshed Road

Existing Conditions



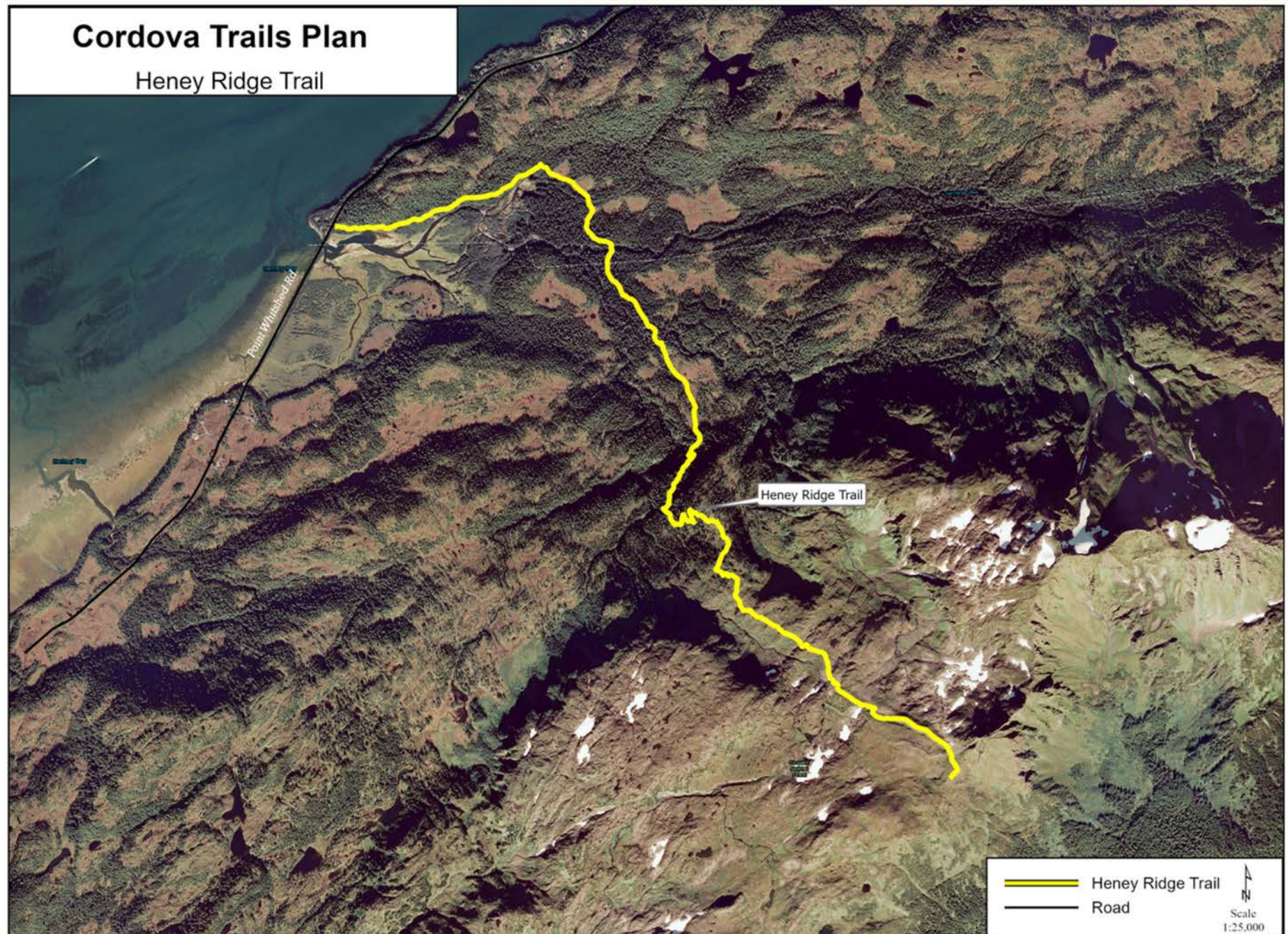
Existing Conditions

Heney Ridge Trail

The first section of the trail follows the contour of Hartney Bay and offers excellent birdwatching and wildlife spotting opportunities. Spawning salmon may also be viewed from mid-July to August. The next two miles climbs moderately through spruce-hemlock forest and muskeg areas scattered with wildflowers. The last mile is a steep climb onto Heney Ridge following rock cairns above tree line. Once on the ridge you are treated to spectacular views of the Copper River Delta, the Prince William Sound, and Kayak Island (on clear days). The trail is muddy and wet in places, especially after heavy rain.

Location	Mile 4.5 Whitshed Road
Land Ownership	Eyak Corp, State of Alaska, USFS
Management Agency	USFS
Trail Length	3.88 mi
Elevation Gain	2788 ft
Min/Max Altitude	Min. 30 ft; Max. 2818 ft
Trail Type	Terra
Class	3
Current Use	Hiking
Designed Use	Hiking
Managed Use	Hiking
Trail Facilities	Parking lot at trailhead; information kiosk

Existing Conditions



Existing Conditions

Eyak River Trail

This trail follows the west bank of the Eyak River for a quarter mile through mature Sitka spruce forest before opening into rolling muskeg meadows. At mile 1.5 the trail reunites with Eyak River. The trail continues following Eyak River a short distance until it reaches Mountain Slough. The trail follows Mountain Slough until reaching the site of Crystal Falls Cannery where the trail ends. Along the trail, the flora composition changes to a typical delta habitat of dense alder and grasses. Only the first 1.5 miles of the trail are maintained. This is a popular access site for anglers during the coho salmon season from August to mid-September. The trail is muddy and wet in places, especially after heavy rain.

Location	Mile 5.5 Copper River Highway
Land Ownership	Eyak Corp
Management Agency	USFS
Trail Length	5.3 mi
Elevation Gain	87 ft
Min/Max Altitude	Min. 24 ft; Max. 112 ft
Trail Type	Terra
Class	3 (1.5 mi); 1 (3.8 mi)
Current Use	Hiking
Designed Use	Hiking
Managed Use	Hiking
Trail Facilities	Parking lot at trailhead; information kiosk

Existing Conditions



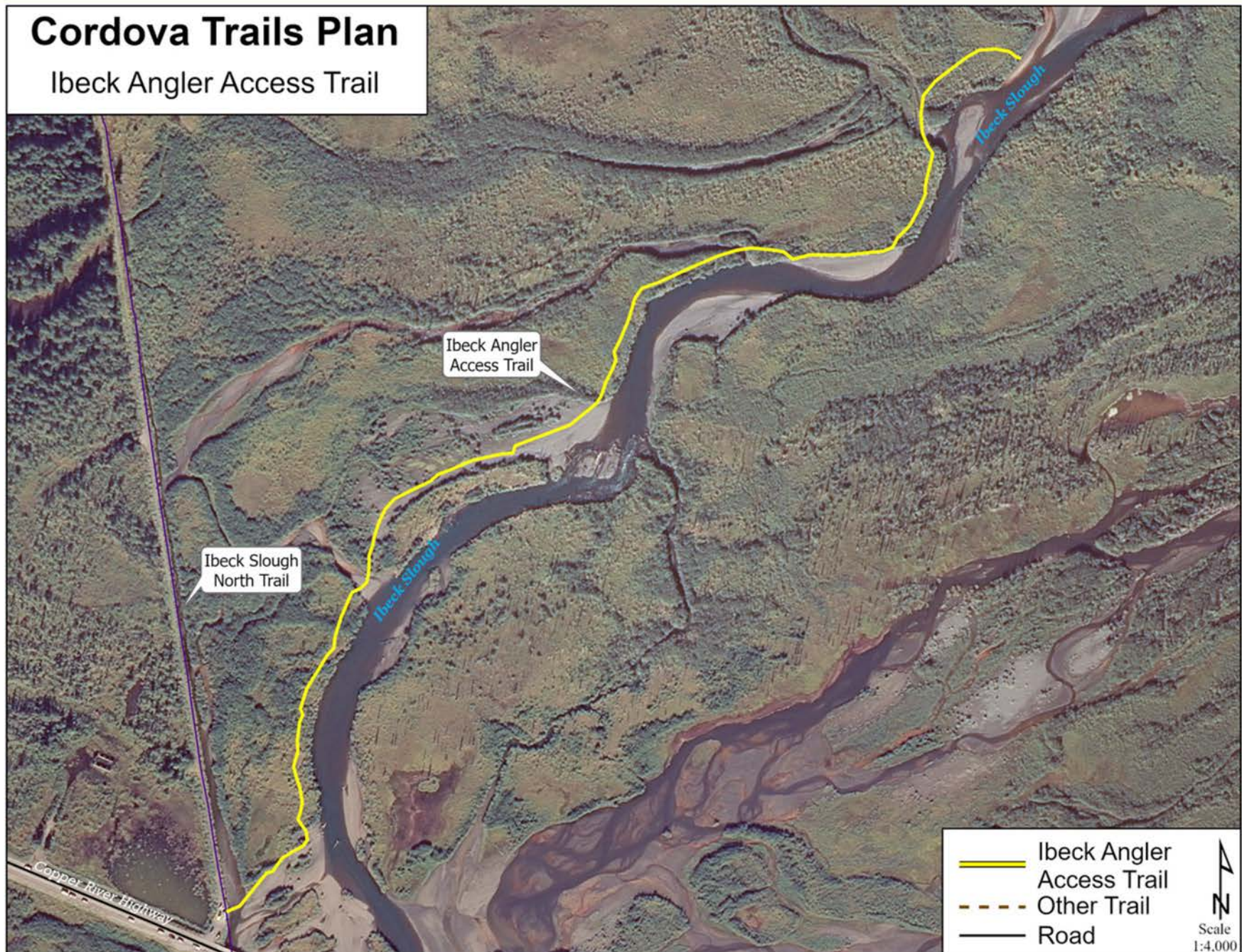
Existing Conditions

Ibeck Angler Access Trail

This trail is a heavily used .60-mile angler-access trail to popular sport fishing on North Ibeck Creek. The trail aids in spreading out anglers along the creek, alleviating pedestrian congestion at the road where anglers tend to congregate and fish. It follows North Ibeck Creek starting at mile 7 of the Copper River Highway. It receives heavy use during coho salmon sport fishing in mid-to-late summer. However, it has become a very popular early spring and summer hiking trail for individuals and families looking for an easy hike near town in an open, sunny area of the Copper River Delta. The trail utilizes puncheons, overlapping rock steps, and step/run boardwalk to follow the creek accessing multiple gravel beaches where the public can relax and explore.

Location	Mile 7 Copper River Highway
Land Ownership	USFS
Management Agency	USFS
Trail Length	.60 mi
Elevation Gain	10 ft
Min/Max Altitude	Min. 30 ft; Max. 40 ft
Trail Type	Terra
Class	3
Current Use	Hiking
Designed Use	Hiking
Managed Use	Hiking
Trail Facilities	Parking for 3 vehicles; garbage receptacle; portable outhouse during peak coho salmon fishing; information kiosk

Existing Conditions



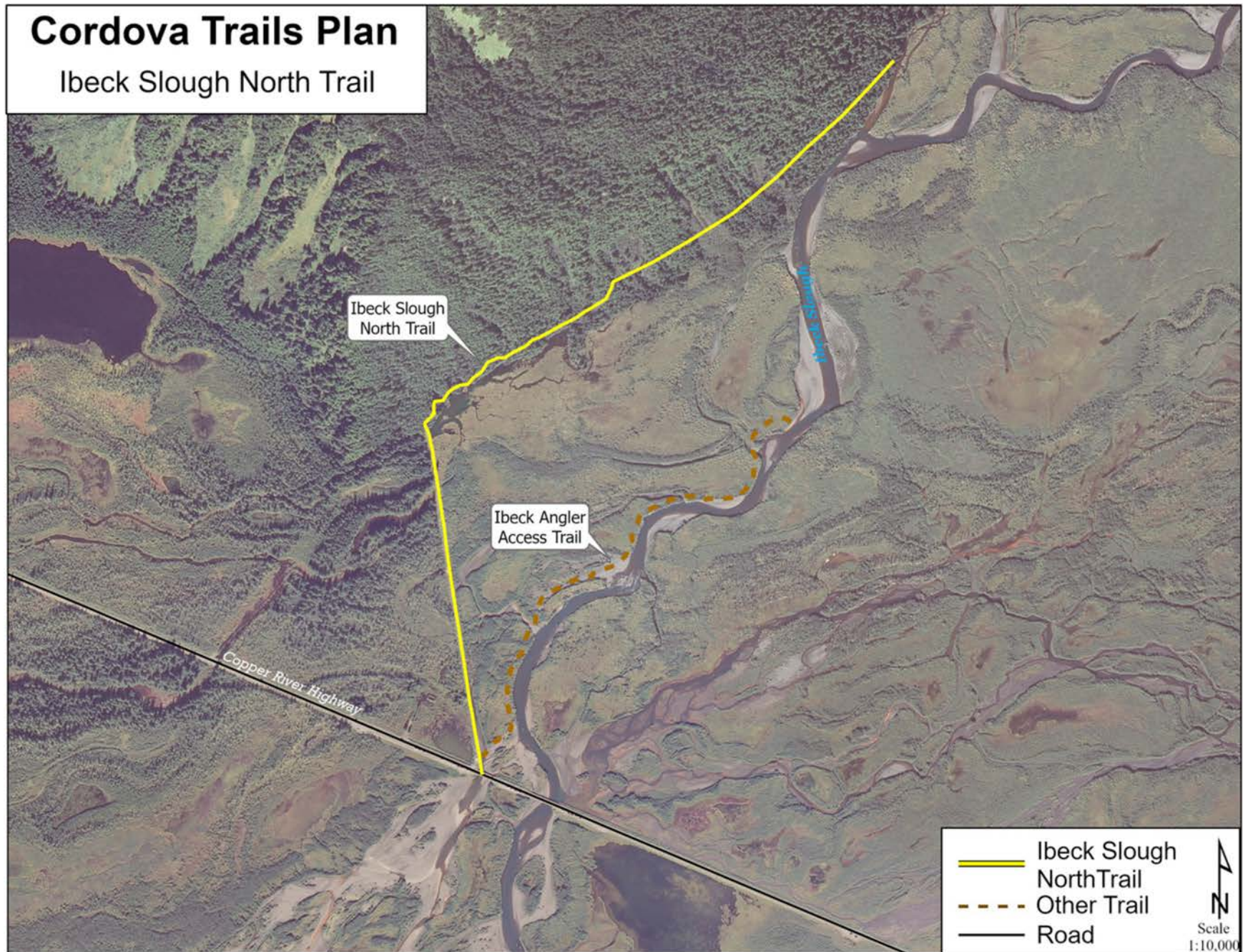
Existing Conditions

Ibeck Slough North Trail

This is a 3.5 mile trail beginning at a shared trailhead with Ibeck Angler Access Trail at mile 7 of the Copper River Highway. The first 1.3 miles are on a permanent dike constructed of gravel and crushed rock leading hikers to the west side of Scott Valley and the base of Queens Chair Mountain. It continues north another 2.2 miles up Scott Valley ending at a small overlook. It provides access to Scott Valley and Queens Chair for bear hunting, goat hunting and recreational hiking. It is accessed primarily during the shoulder seasons of spring and fall. Use is light due to dense alder vegetation along the entire route. However, it has the potential for much heavier year-round use by dog walkers and members of the public looking for a sunny stroll particularly along the dike section during winter months.

Location	Mile 7 Copper River Highway
Land Ownership	USFS
Management Agency	USFS
Trail Length	3.5 mi
Elevation Gain	129 ft
Min/Max Altitude	Min. 36 ft; Max. 72 ft
Trail Type	Terra
Class	3 (1.3 mi); 1 (2.2 mi)
Current Use	Hiking
Designed Use	Hiking
Managed Use	Hiking
Trail Facilities	Parking for 3 vehicles; garbage receptacle; portable outhouse during peak coho salmon fishing; information kiosk

Existing Conditions



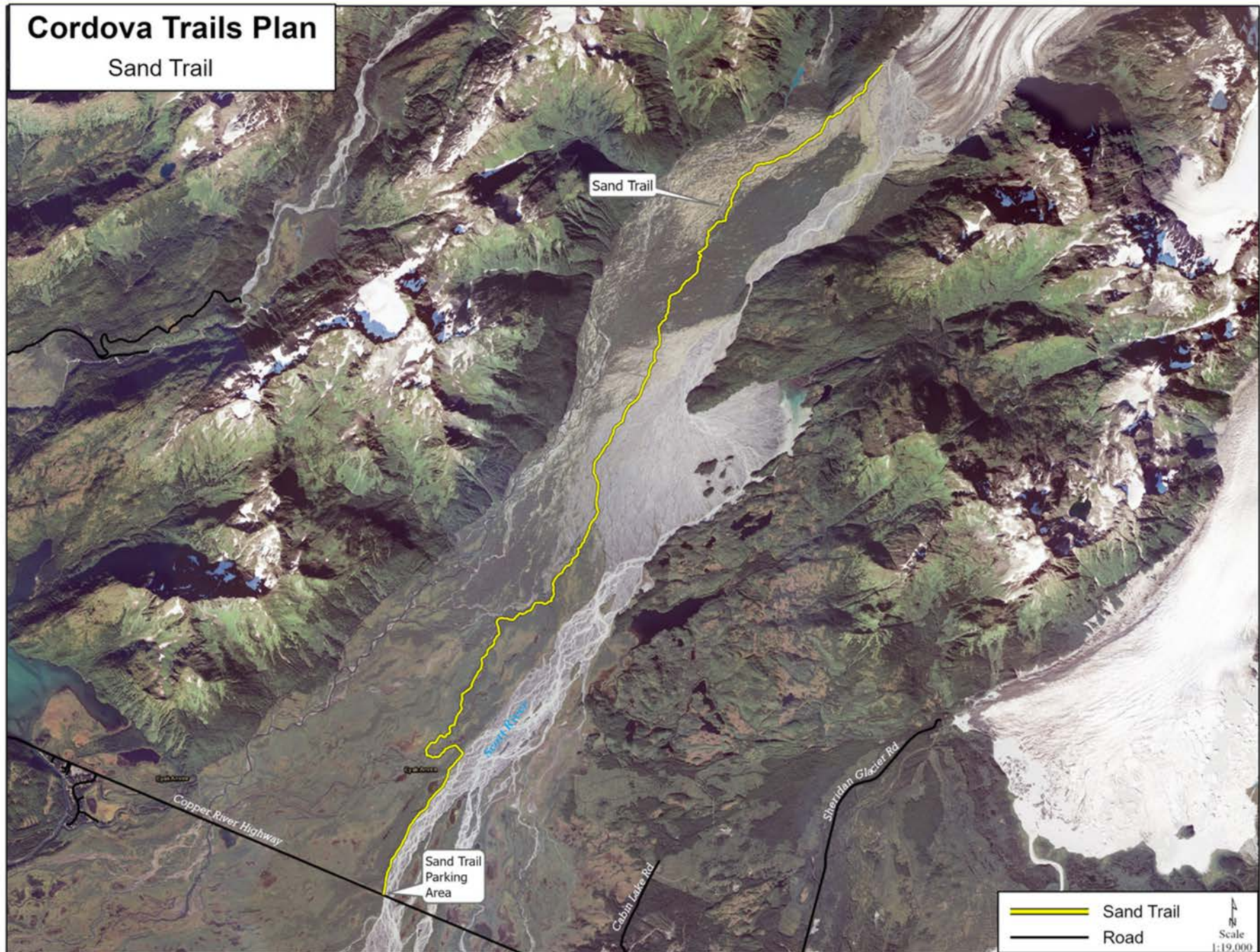
Existing Conditions

Sand Trail

Sand Trail begins at Mile 9 of the Copper River Highway providing motorized access up Scott Valley. The trailhead parking area has capacity for 8 vehicles with OHV trailers. The trailhead and trail are managed primarily for year-round OHV users. It is 12.2 miles on an easy class 3 motorized trail with little elevation change along most of the route. Scott Valley is the first location on the Copper River Delta east of Cordova where the public can find a variety of hunting, fishing and recreation opportunities. In the spring, summer and fall, most people motor or bike the Sand Trail. In the winter, most people snowmachine while others cross-country ski the Sand Trail. The trail passes through several creeks and dense alder with some black cottonwood for the first 6 miles then breaks out into a gravel outwash plain with spectacular views towards Scott Glacier and the Chugach Mountains. The trail ends at the northwest end of Scott Valley near the west face of Scott Glacier.

Location	Mile 9 Copper River Highway
Land Ownership	USFS
Management Agency	USFS
Trail Length	12.2 mi
Elevation Gain	260 ft
Min/Max Altitude	Min. 40 ft; Max. 300 ft
Trail Type	Terra
Class	3
Current Use	ATV/OHV, Snowmachine, Bike, Ski
Designed Use	Motorized
Managed Use	Motorized
Trail Facilities	Parking for 8 vehicles w/ trailers; picnic table; information kiosk

Existing Conditions



Recommendations

Prioritization

Prioritization of the maintenance and improvements to Cordova's trail system drafted in this plan are based upon consideration of the following variables:

- Public Safety
- Frequency of Trail Use
- Availability of Trail for Multiple Use, Including ADA Accessibility
- Proximity to Town
- Ease of Project Completion
- Expense/Availability of Funds

Top trail projects are identified as

- Trails that have not been maintained for a long period of time resulting in trail degradation;
- Trails that need to be improved for safety and accessibility, utilizing official trail building standards;
- Trails which provide a good cross section of trail types, locations, and difficulty to meet the desires of multiple user groups within the community of Cordova and visitors to Cordova.

Proposed Project

Trail Name	Breakwater Trail
Use	walking/hiking
Class	4
Length	.23 mile + 775 feet
Partners	City of Cordova/USFS/State-DNR

Work Priority Highlights

- Deferred Maintenance
- Extend the existing 1100-foot trail an additional 800 feet
- Construct railing along entire route to keep hikers from stepping over trail edge and falling onto rocks



Proposed Project

Trail Name	Odiak Pond Trail
Use	walking/hiking
Class	5
Length	.18 + 555 feet
Partners	City of Cordova/USFS/State-DNR



Work Priority Highlights

- Heavy deferred maintenance on elevated boardwalk
- Extend the existing 500-foot trail an additional 1050 feet
- Ensure trail and boardwalk are built to Americans with Disabilities Act (ADA) standards.



Proposed Project

Trail Name	Power Creek Trail
Use	walking/hiking/biking
Class	2
Length	4.2 miles
Partners	USFS

Work Priority Highlights

- Redesign the trail section through Power Creek Valley terminating at the Power Creek Cabin for mountain bike/fat bike users.
- Ensure trail design takes into consideration potential user conflicts between hikers and bikers.
- Develop and install signage to inform and manage this multi-user trail.



Proposed Project

Trail Name	Mike O'Leary Trail
Use	walking/hiking
Class	3
Length	1.2 miles
Partners	USFS

Work Priority Highlights

- Work with US Forest Service and John Harvill (Alpine Properties) to establish a trailhead parking area to access and construct a hiking trail to Scout Lake.
- The proposed trail will quickly cross the property boundary between Alpine Properties and the US Forest Service, ending at Scout Lake. The USFS will be responsible for maintenance of both the parking area and trail.



Proposed Project

Trail Name	O'Leary Intertie Trail
Use	walking/hiking
Class	3
Length	0.96 miles
Partners	City of Cordova/USFS/State-DNR



Work Priority Highlights

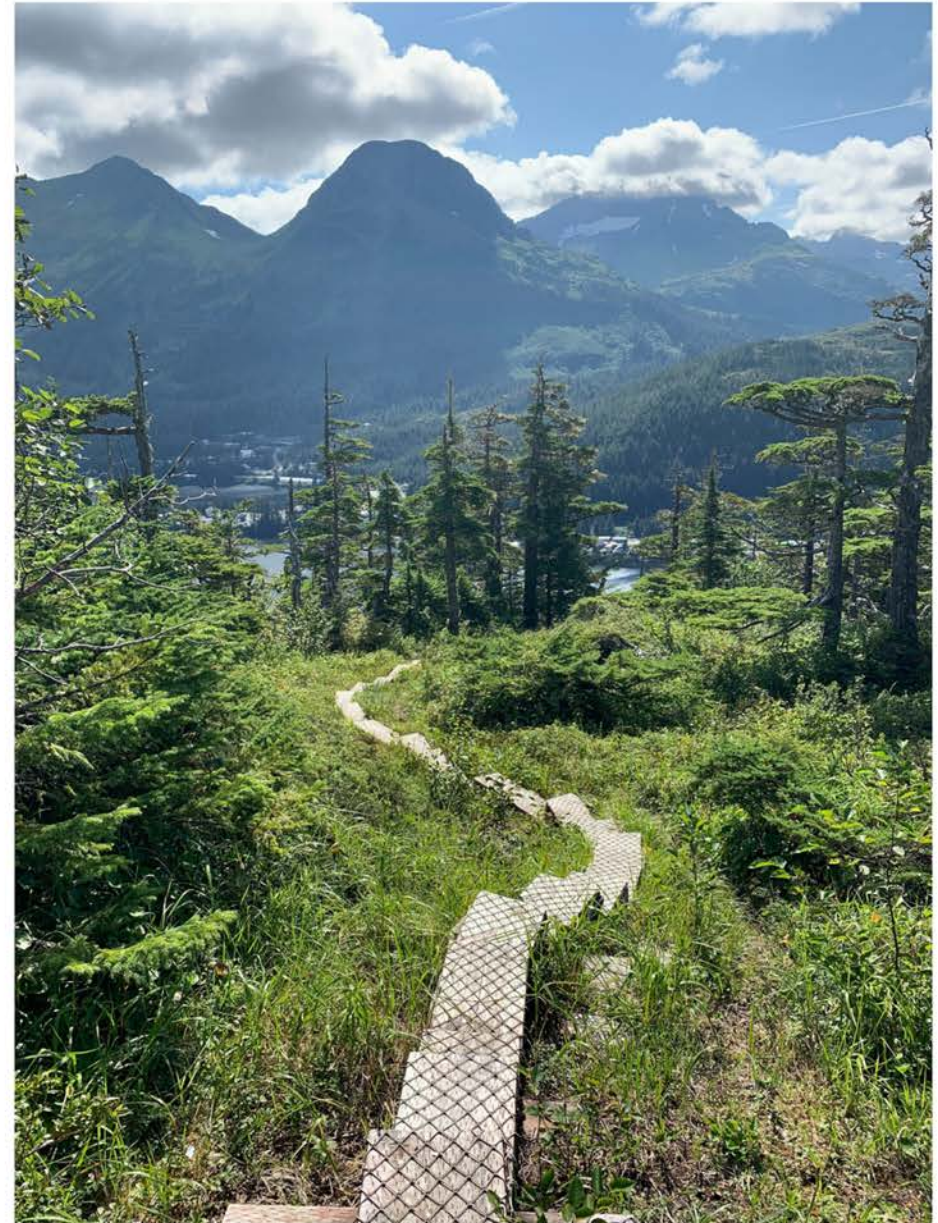
- Reconstruct a variety of trail tread and trail structures along the entire length of the trail.
- Develop and install trail signage and route markers
- Deferred clearing maintenance

Proposed Project

Trail Name	Eyak Mountain Trail
Use	walking/hiking
Class	3
Length	1.95 miles
Partners	City of Cordova/USFS/State-DNR

Work Priority Highlights

- Reconstruct a variety of trail tread and trail structures along the entire length of the trail
- Develop and install trail signage and route markers
- Deferred clearing maintenance



Proposed Project

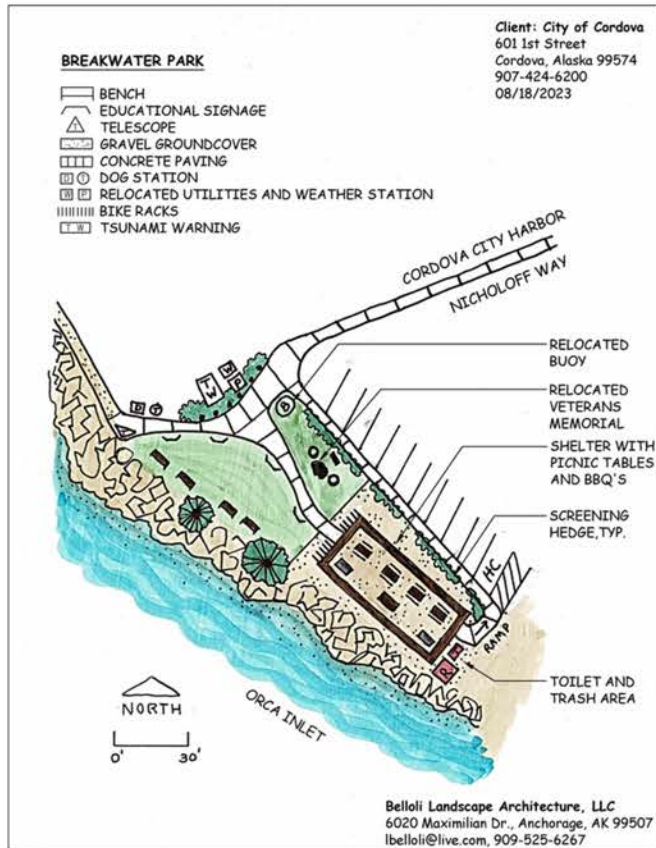
Mystery Meadows Trails Expansion

The existing trail system receives frequent use, with or without snow. Ideas, plans and designs are being explored for improvement and expansion of the existing, interconnected trails for multi-user groups of varying abilities.

The City of Cordova and Sheridan Alpine Association are coordinating to create a specific plan for management of the Mt. Eyak Recreation Area which includes this proposed project.



Proposed Project



Cordova Covered Spaces Project

Proposed sites Fall 2022



Cordova Trail & Covered Spaces Project is a vision shared by many people in Cordova. The Covered Spaces Project plan is to build multiple outdoor covered spaces in the Cordova area along existing and planned Cordova trails and roads. Cordova is an amazingly picturesque area surrounded by the Chugach National Forest, Prince William Sound, and the Gulf of Alaska. Spectacular views are everywhere you turn but the weather can be challenging. Even in inclement weather, festivals, classes, meetings, picnics, art activities, school trips, and contemplation become possible under covered spaces. Numerous community events already occur in areas where covered spaces are planned, including The Copper River Delta Shorebird Festival, Bay to Bay in May Ride/Walk/Run event, educational classes, and art events. With the addition of covered spaces, life in Cordova will be enhanced for all community members and visitors.

Proposed Project

Proposed Covered Space and Trail Site Examples



Maintenance

This is by far the most important and usually the most neglected aspect of trail systems. Trails are exposed to constant environmental conditions and erosional factors. It is imperative that there is staff and a budget in place to support the trail system. Without this, the system will rapidly fall into disrepair especially in this area. The City of Cordova, State of Alaska DNR, and US Forest Service all play a role in this.

Annual inspection and inventory of trail assets, especially multi-use trails helps ensure that damage is minimized, risks are identified, and repairs can be made in a timely manner, enhancing safety and protecting investments as well as natural and cultural resources.



Trails built and maintained within the USFS will follow the FS Standard Trail Plans and Specifications found at this web address:
<https://www.fs.usda.gov/managing-land/trails/trail-management-tools/trailplan>

and follow the USFS Trail Construction and Maintenance found at this web address:
<https://www.fs.usda.gov/t-d/pubs/htmlpubs/htm07232806/index.htm>

The USFS and NPS tend to be the go-to organizations nationally on best practices on design, tools, and techniques for trail construction and maintenance.

- Trails that are on USFS managed lands will be built and maintained by the USFS. This includes the Mike O'Leary Trail and Power Creek Trail.
- The City of Cordova Parks & Recreation, supported by partnerships with USFS, State DNR, and local organizations, will be the lead in building and maintaining trails on City of Cordova and State of Alaska DNR lands. This includes the Breakwater Trail, Odiak Pond Trail, O'Leary Loop Trail, and Eyak Mountain Trail.

Maintenance

Routine Maintenance	Function	Frequency
Trail triage	Essential trail failure repairs	Spring, summer, fall, post-storm event
Condition assessment	Larger repair improvment planning	20% assets per year
Spring clearing and hazard assessment	Clear dead fall, identify and repair immediate hazards	May-June as trails clear, post storm event
Drain work, clear, repair, establish	Erosion control	Spring-summer, post-storm event
Tread asessment, trail integrity, hazard removal, grade reversals, outslope repair	Trail durability, stabilization, erosion control	Summer-fall
Brushing	Improve sight lines, remove vegetative encroachment	Summer



Partnerships



National Park Service

RTCA

Rivers, Trails and Conservation Assistance Program



The Native Village of

EYAK



CITY of CORDOVA
PARKS
& RECREATION



US Forest Service

Chugach National Forest, Cordova Ranger District



Appendix

Public Involvement Methods

Purpose

Why we engaged the community

- Ensure we are reaching people who haven't been as engaged in the past
- Make sure our engagement avoids alienating people
- Educate the public
- Get a broad range of ideas and perspectives
- Include a broad range of user groups
- Build buy-in and ownership

What we learned through community engagement

- Why people use the trails, how they want to use the trails, and what that means for future planning
- Identified trail ideas we missed
- Stakeholder perspectives
- Where the plan is weak
- Potential funding sources

Goals we achieved through community engagement

- Created a collaborative, broad-based public engagement strategy to inform the vision, goals, and priorities of the trail planning process
- Designed strategies that engage and strengthen partnerships needed to sustain the trail system in Cordova

Cordova Trails Open House

When Tuesday, September 20th, 11am to 8pm.
Speaker and raffle prizes start at 6pm.

Where The Cordova Center, Lower Atrium

The City of Cordova Trails Committee wants your input on the future of Cordova's trails!

- This event will be an opportunity to discuss your ideas for trails, write them down, and put them on the map.
- Bring the kids! A map coloring activity will be provided.
- Coffee, tea, and cookies provided 6pm to 8pm.

Featuring... A FREE BIKE GIVEAWAY
From Cordova Gear

And enter to win... A free night at a cabin!

Contact for more information or accommodations:
cordovatrails@gmail.com

City of Cordova ALASKA

Can't make the survey and use the

CORDOVA TRAILS

THE CITY OF CORDOVA TRAILS COMMITTEE IS CREATING A COMPREHENSIVE TRAIL PLAN.

WE WANT YOUR INPUT!

Our Vision
An inclusive, holistic, and well-managed local trail system that meets the diverse needs of the Cordova community and fosters connections through shared stewardship.

Plan Focus
We are looking at trail maintenance, improvement and development, increased accessibility and diversifying trail uses, funding opportunities, and trails advocacy.

Community Input
We look forward to engaging with the community to hear your thoughts. Follow the QR code to take a quick survey!

Contact Planning Team at:
cordovatrails@gmail.com

City of Cordova ALASKA

Appendix

Public Involvement Methods

TIMELINE

Summer 2022 - Provide information and create awareness

Fall 2022 - Engage, survey

Winter 2022 - 2023 - Community meetings and Landowner meetings

PHASE 1

Goals

- Residents of Cordova know that the planning effort is underway
- Landowners are informed and aware of the planning effort

Audience

- Landowners
- General public user groups

Strategies

- Mail and email formal letter to landowners
 - Purpose: Inform audience of the planning process.
 - Status: Completed
- Distribute information flyer at public events, in public buildings, and online
 - Purpose: Allow the public to become familiar with the project and provide initial feedback
 - Status: Completed

PHASE 2

Goals

- Gather input from the public on what they want to see for Cordova's trails
- Learn their priorities

Audience

- All members of the public

PHASE 2 cont.

Strategies

- Open House Meeting
 - Purpose: Provide an opportunity for members of the public to engage with committee members and talk about trails in Cordova. Gather their input for what they'd like to see for the future of Cordova's trails.
 - Status: Completed
- Public Survey & Interactive Online Map
 - Purpose: Gather input for what the public would like to see for the future of Cordova's trails.
 - Status: Completed

PHASE 3

Goals

- Meet with landowners
- Inform and collaborate

Audience

- City of Cordova, USFS, State of AK, Chugach Corp, Native Village Eyak, and Eyak Corp

Strategies

- Scheduled in-person and zoom meetings with landowners
 - Purpose: Provide an opportunity for landowners/managers to engage with committee members and talk about trails in Cordova. Gather their input for what they'd like to see for the future of Cordova's trails.
 - Status: Completed

Appendix

A sample of Community Outreach Responses

	What do you love about Cordova trails?	What is your favorite trail?	What is missing from the trail experience in Cordova?
6/9/2022 14:30:54	There are various environments to hike in, e.g., mountain trails, muskeg trails, forest trails, etc. Our trails have had a lot of effort put into them, which is necessary for our ecosystem, climate, and landscape.	Depends on mood, weather, time, dogs, and who I'm hiking with.	<ol style="list-style-type: none"> 1. Developed and maintained trails/pedestrian paths in town. There are several under-developed right of ways that could be maintained as trails throughout town, such as Fifth Street from Lake to Browning and in general Ski Hill/Lake Ave area. 2. Development of trails in and around the immediate town area. The trail behind the old Porterhouse building that connects to the Ski Hill trail is an incredible trail located right in town. It would be great to see more investment/maintenance in similar trails around town, specifically the hillside above Vina Young, the Ski Hill area north towards Hippie Cove, Hippie Cove area, Crater Lake trailhead back towards town, etc. 3. ADA trails. Hopefully if harbor boardwalk happens, that can be an ADA "trail." Currently Alaganic is the only ADA trail and is located far out of town. Perhaps there is boardwalk potential around Ski Hill, Nirvana Park, Hippie Cove/Science Center, or other areas? 4. Information/maps about trails for people new to town. I'm not sure people know about the Porterhouse trail or some of the pedestrian routes through town, such as the stairs up Fourth Street, Breakwater Trail, etc. 5. More investment/maintenance in some of our existing trails accessible from town, such as Mike O'Leary trail and upper trail to Eyak Peak.
6/9/2022 17:05:13	I love that they provide a way to access and recreate in our incredible surroundings; I love the diversity of views/habitats that we can experience on our trail system; I like that they aren't too crowded but do get a lot of use;	Crater Lake	I would like to see more hike-in cabins. I'd also like more peak/ridge climbs; also flat/low elevation trails are nice for kids & older folks who want to get out in nature.
6/9/2022 21:59:23	They are fun. We get out of town and into the forest. We get to explore new places.	Most of them need some upkeep; I like too many to have a favorite.	Some trails are not marked sufficiently.
6/10/2022 6:57:59	Ability to safely travel around Cordova, not in a car	Ski hill	Safe side of the road paths for biking, walking, ATVs or snowmachines
6/11/2022 19:50:28	That we have them!	Ever single one of them are wonderful to be able to experience.	Trail Connections
6/18/2022 9:08:09	I love that we have some trails in town, and many more out of town.	Power creek	Good trail out Whitshed Road
6/27/2022 11:02:19	how they are so accessible, so many great ones that begin right in town	ski hill, crater lake	an event re: hiking, like Mt. Marathon

Appendix

A sample of Community Outreach Responses

8/12/2022 16:11:02	How well maintained they are. Easy to navigate		
8/12/2022 22:12:30	Accessibility and views	My ayak	Better mt bike trails and generally trails for bikes. The missing connection is the white shed ballfield with town.
8/12/2022 22:28:12	So easy to access and use.	Reservoir area.	An established 5 kilometer loop that could be used for high school cross-country running races instead of running them on the road.
8/12/2022 22:49:41	Proximity/access	Pipeline lakes	Bike trails!
8/12/2022 23:23:25	Various terrain and well maintained trails by the Forest Service. Netting on the boardwalks is much safer to walk on and much appreciated!	Mount Eyak summit on a clear day	Better signage for the Alice Smith Interie Trail near Crater Lake
8/13/2022 0:21:14	Variety: topography, distance, views	Sheridan Glacier, Reservoir, Ski Hill	Poop bags & trash cans @ trailheads
8/13/2022 11:02:39	There are so many of them and they are all over!	I don't have a favorite! They are all great in their own ways!	Nothing! Our trails are fabulous! I actually think that if Cordova is allocating more money to trails than they normally do then we have a problem. This money should go towards something we actually need like more teachers and police.
8/13/2022 23:59:55	ViewsSheridan Mountain but there are so many I love	Maybe more signs about the area and history
8/15/2022 10:57:57	Their close proximity to town, ease of access and lack of crowds.	Crater Lake trail	More access points to the alpine.
8/20/2022 10:06:55	Easy to get to many trails	It really depends on my mood, the weather and other factors. I've never been one who can pick out a favorite.	I would love it if there were more trails a half mile or longer in length one way in town that weren't steep but were of a moderate up and down grade. I like hiking the ski hill and crater lake but sometimes I want something that isn't as steep but I don't want to drive to Pipeline or McKinley. I realize the terrain around town doesn't easily lend itself to that but there might be places where that is possible.
8/29/2022 20:40:08	How close some are to town for convenient lunch breaks, not crowded, epic views, beautiful bountiful rain forest....	Heney ridge	Covered space for picnics, gathering, even lean to for camping
7/16- 7/17			7.5 Mile dike improvements, brushing & maybe a covered place near the end, Mt. End. A board walk out to the lake/ wetland E of lake Eyak wier & just W. of the dike trail.
7/16- 7/17	Reservoir trail - close to town, great views!! Haystack - short, easy. Sheridan Glacier - the end reward is fantastic.	Ski Hill - great view at top but steep for "old knees"!	More accessible to town. Create a loop: hospital - Whiteshed Rd bike path - across the lough to high school, back to the CR highway
7/16- 7/17		Fishing trail off Alaganik Slough road - fishing. Pipeline lakes trail - scenery, fishing, berry/ mushroom picking	Other ideas: Like to see sheltered spaces - 3 sided so rain doesn't blow in. Petersburg has some long shelters good for group picnics, events. 2. Fishing pier at pullout just beyond Hippie Cove. Easy access for kids. Short pier could access 40' water, suitable for halibut - Eyak Corp land will need some negotiation

Appendix

A sample of Community Outreach Responses

7/16- 7/17			
7/16- 7/17			
7/16- 7/17			
7/16- 7/17			
7/16- 7/17			
7/16- 7/17			
7/16- 7/17			
5/5 - 5/17	Terrain diversity, ridges (with views), along river, to mountain lakes.	Crater Lake	Maintenance on existing trails as they wear.
5/5 - 5/17	Accessibility	Haystack	More trails refurbished and covered picnic areas in the vicinity
5/5 - 5/17	Accessibility	Crater Lake trail but there are so many, haystack etc, 5th and lake	More trail markings on trails, i.e. Reservoir, Ski Hill,
5/5 - 5/17	That we have them!	All of them	More covered picnic areas near trails close to Cordova Town center
5/5 - 5/17	It is a benefit to our community to have trails with easy access.	Ski Hill	It would be a nice addition to have covered areas near trails to get out of the rain
5/5 - 5/17	Peaceful, scenic wildlife, pristine I like them alot	Crater lake	Places to get out of the rain, more connection of existing trails

7/15/2022 18:02:26			
7/15/2022 18:22:54	The scenery!	Sheridan Mountain	Picnicing sites!
7/16/2022 16:21:38	Accessibility and well maintained.	Mt Eyak Trail	An extensive bike trail from town to the airport.
7/16/2022 16:28:07	Accessibility and upkeep	Crater Lake Trail	Bike or running paths
7/16/2022 16:34:17	They are very well maintained.	Ski hill trail.	Hut to hut trail hiking.
7/17/2022 11:35:18	They're an awesome Connection to the beautiful wilderness of Alaska.	Mt Eyak is at the top of the list followed closely by Heney Ridge.	I think the development of a trail up to Mt Eccles would be a great addition in the future if possible. Besides that, all Other trails are well maintained and accessible.
7/17/2022 14:35:17	Informative	Crater Lake	Signage on Ski Hill trail
7/17/2022 16:42:33	Yes	Surprise Valley or Power Creek	Don't know right off. Have really liked the lopped trails.
8/12/2022 12:29:16	There are so many and varied	Pipeline	I love it
8/12/2022 12:46:02	I love trails that have good visibility for bears, humans, etc, but still feel like you can connect with nature. Good views are also a plus.	Ski Hill, hands down. Reservoir close second	BIKE trails!!! Especially kid-friendly bike trails, or lower grade trails that don't have intense inclines. Ski hill would be a fantastic place for more trail development, but would love to see a bike trail network throughout town that keeps kids further from cars. But also without dense brush coverage because of bears.
8/12/2022 14:28:11	There are many readily accessible.	Mt eyak...its right out my back door	Would also love to see a less steep, and longer trail to access the reservoir area for hikers of varying abilities or those with joint issues.
8/12/2022 15:25:34	The ski hill trail system	Hidden valley loop	More benches..places to rest and enjoy the views.
			Covered picnic Areas

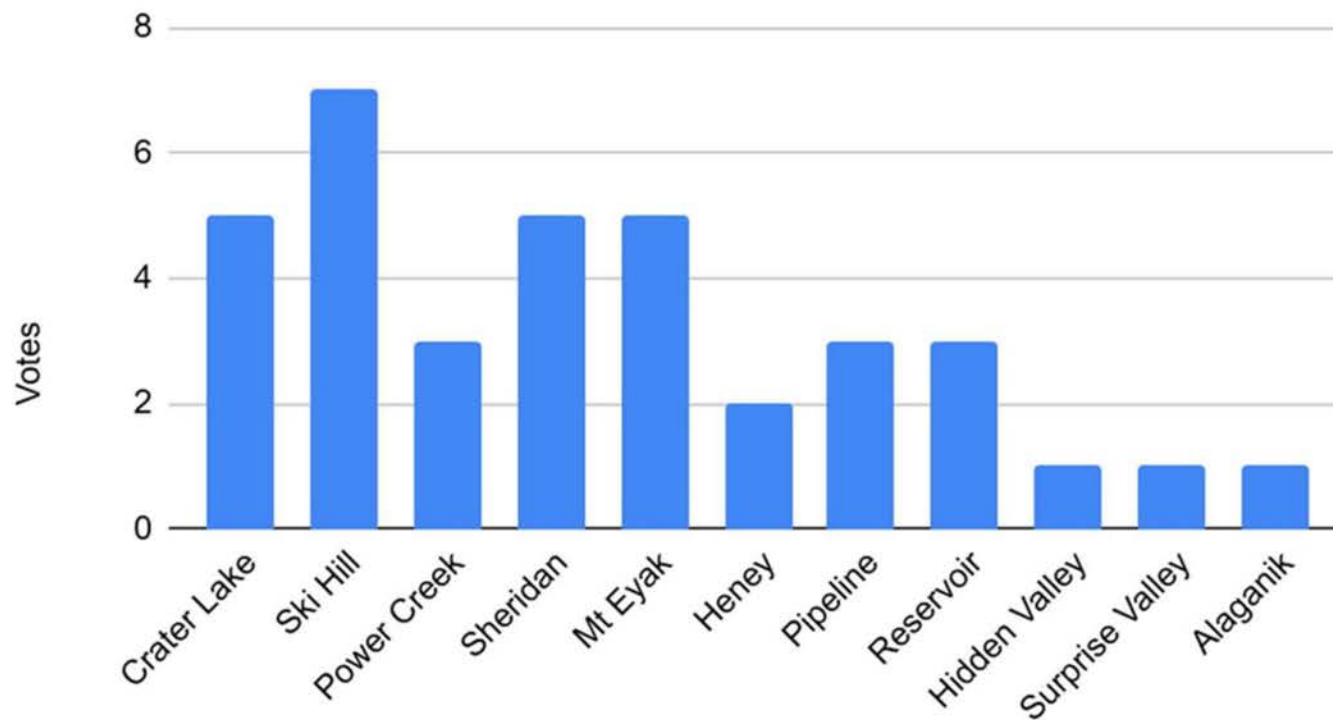
Appendix

COMMUNITY SURVEY QUESTIONNAIRE RESULTS

Cordova residents were asked to participate in a survey about their desires for Cordova trails. A total of 50 local residents responded to the following questions:

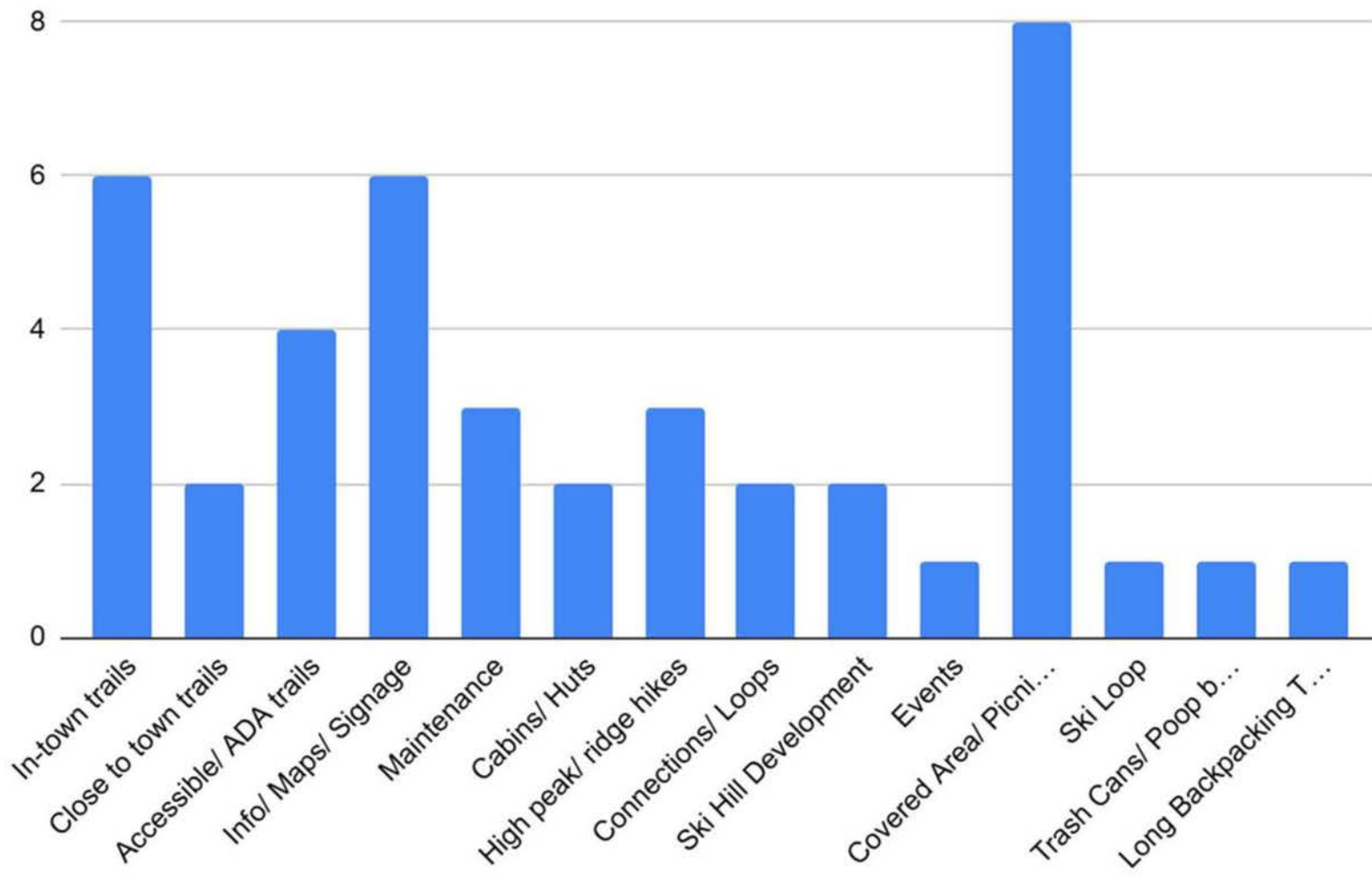
- What's your favorite trail?
- What improvements could be made?
- What do you love about Cordova Trails?

What's your favorite trail?



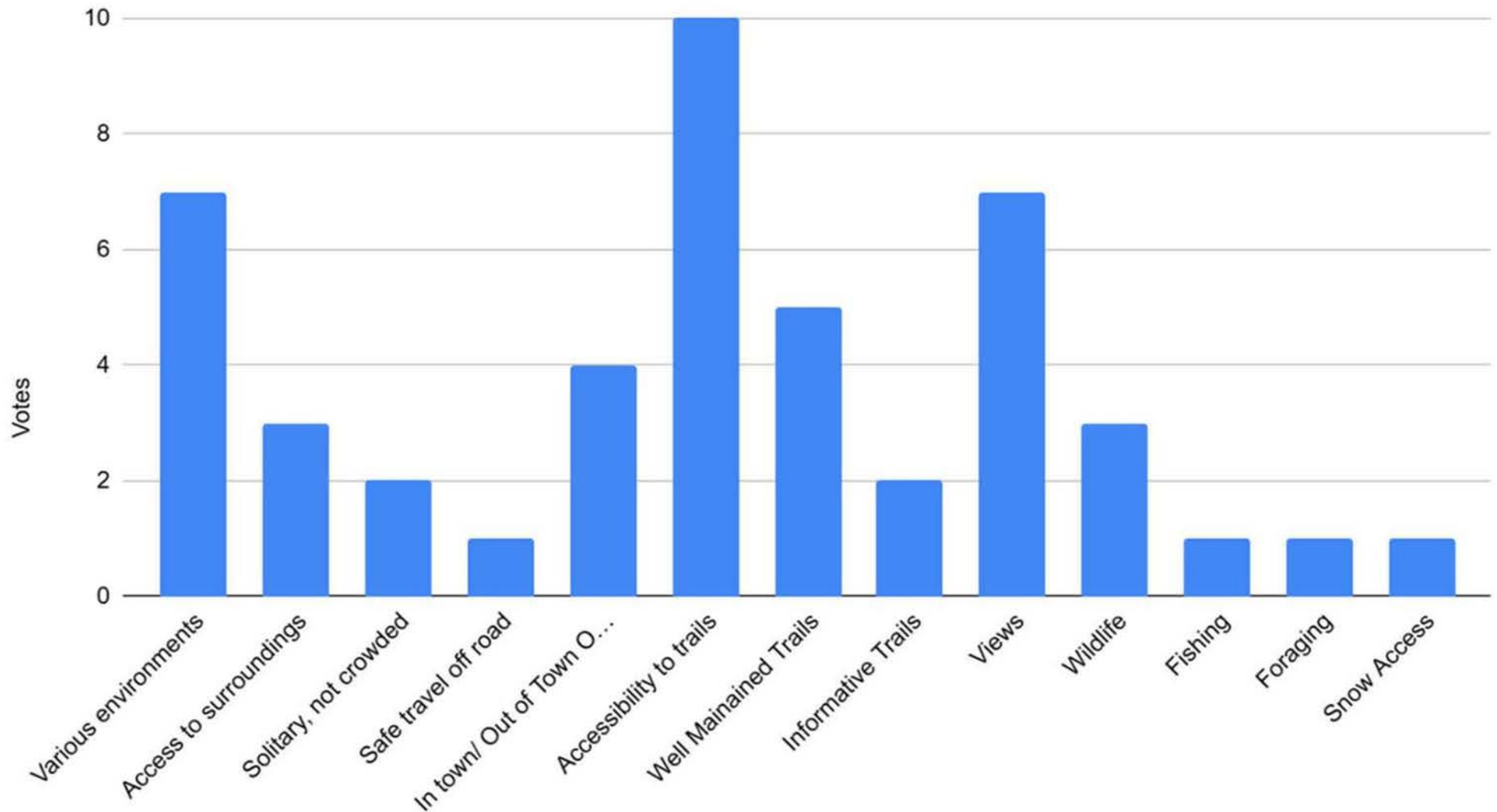
Appendix

What improvements could be made?



Appendix

What do you love about Cordova Trails?



Appendix

General Ski Area Map

Mt Eyak Ski Area offers alpine skiing and snowboarding on Mt Eyak above the town of Cordova, Alaska. Mt Eyak uses an historic 1939 American Steel and Wire single chair lift, as well as a rope tow on the beginner slope. The base elevation is 400 feet, rising to 1200 feet at the top of the single lift, for a vertical drop of 800 feet. The annual snowfall averages 350". With a variety of different trail options, including a new easy trail down the hill, the area offers something for everyone (mteyak.org). A ski area map, made by MapSynergy, gives an overview of the downhill ski trails maintained at Mt Eyak. The Sheridan Alpine Association manages the ski area.

The City of Cordova and Sheridan Alpine Association will be coordinating to create a specific plan for management of the Mt Eyak Recreation Area that includes the Mt Eyak Ski Area.

