

Committee Chairman

Dave Zastrow

Committee Secretary

Elizabeth Senear

Committee Members

Toni Godes

Michelle Hahn

Ryan Schuetze

Stormy Haught

Parks & Recreation

Director

Duncan Chisholm

The City of Cordova
Trails Committee

Regular Meeting

May 22, 2024 @ 6:00 pm

USFS 2nd Floor Public Meeting Room

AGENDA

A. Call to Order and Roll Call

B. Approval of Regular Agenda

C. Correspondence/Visitors

1. Presentation of Correspondence
2. Invited Visitors Presentations

D. Discussion Items

1. Review plans for trail maintenance on the O'Leary Intertie Trail project implemented through the PWSEDD and SCA.
2. Discuss setting up community volunteer opportunities on O'Leary Intertie Trail project.
3. Review plans for trail maintenance on the Eyak Mountain Trail project implemented through the City P&R.
4. Review Trails Plan edits.

E. Next meeting date & place/agenda items

G. Adjournment

If you have a disability that makes it difficult to attend city-sponsored functions, you may contact 424-6200 for assistance

Full City Committee agendas and packets available online at www.cityofcordova.net

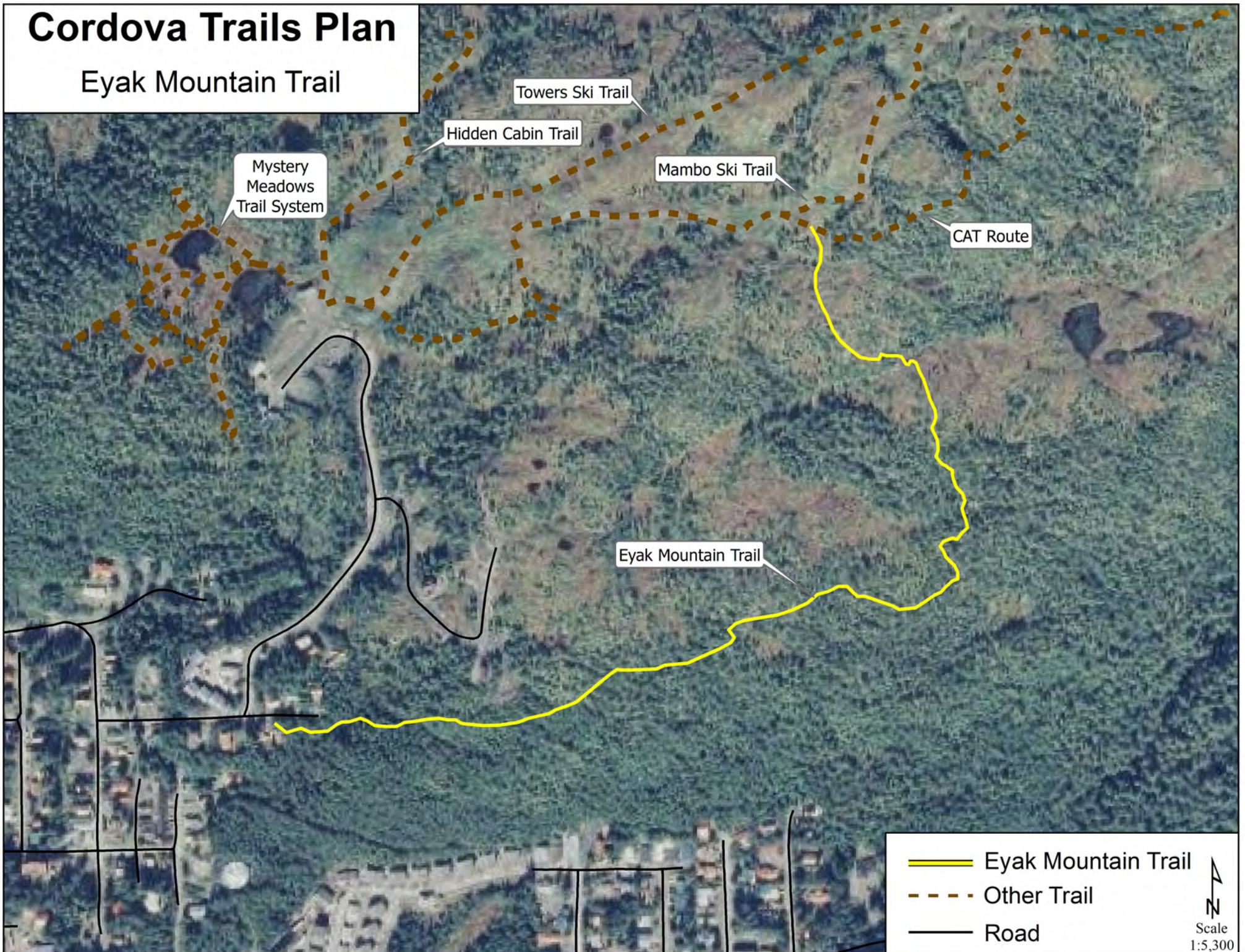
Cordova Trails Plan

O'Leary's Intertie Trail



Cordova Trails Plan

Eyak Mountain Trail



City of Cordova

Comprehensive Trails Plan 2023



Welcome

The Cordova Comprehensive Trails Plan is the result of a 13 year, community-wide, planning effort. This plan achieves the primary goal established in 2018 of setting a clear direction for managing, maintaining and promoting Cordova trails. "Managing" includes trail planning and design, construction, and funding. Final implementation of the plan rests upon the trail plan partners and the public. Partners to the plan represent Federal, State and City government, Native Corporation and Cordova Trails Plan committee. These partners will combine resources with individuals, businesses and foundations in order to establish a cost-effective and diversified trail system. Some examples of the cost savings that can be realized through this unique partnership relationship are the use of volunteer labor, eligibility for grants not available to governments, in-kind contributions of expertise in trail planning and design, and collaboration to supply resources for trail maintenance.

Acknowledgements

City of Cordova

Director, Parks and Recreation - Duncan Chisholm

Cordova Trails Committee (CTC)

Elizabeth Senear, Toni Godes, Ryan Schuetze, David Zastrow, Wendy Ranney, Michelle Hahn, Stormy Haught

Other Contributors:

NPS Rivers, Trails & Conservation Assistance Program (RTCA)

Zachary Babb, Kristin Pace, Leigh Ann Belloli, Lizzy Dean, Michael Downs, Page Seibert

Casey Planning & Design

Nancy Casey

Chugach National Forest

Dave Zastrow, Kate Mohatt, Dylan Charnon, Leah Mullins, Caine Daugherty

The Eyak Corporation

Tiffany Beedle, Lands Manager

Sheridan Alpine Association

Dave Branshaw, Paul Swartzbart, John Williams, Heath Kocan, Steve Vican

Cordova Historical Society

Cordova Covered Spaces Project - Natasha Casciano, Dotty Widman

Cover photo: Liz (Elizabeth) Senear

Table of Contents



Introduction -----	5
Executive Summary -----	6
About Cordova -----	7-11
Existing Plans -----	12
Overview -----	13
Values, Mission and Vision -----	14
Goals -----	15
Existing Conditions -----	16-39
Recommendations -----	40
Proposed Projects -----	41-48
Maintenance -----	49-50
Partnerships -----	51
Appendix -----	52-56

Introduction

Cordova's trail system is a valuable community resource. Trails provide residents and visitors access to a variety of natural environments and offer opportunities for exercise, recreation, subsistence, and many other activities. Trails near town present readily accessible options to take a walk and enjoy nature and allow visitors to easily experience the spectacular scenery around Cordova. Trails outside of the immediate downtown area can be accessed by bike, walking, or vehicle.

Cordova's trails range from gentle shoreline strolls to strenuous alpine hikes and offer opportunities for a variety of experience levels and interests. Many of the trails within this system are multi-use including hiking, skiing, snowshoeing and biking. Motorized use including ATV and snow machine are allowed on some of the trails within the recreation system. Cordova's tradition of respecting the rights of each group's use of these trails and common courtesies make for a friendly and safe outdoor experience.

The community has expressed a strong desire for greater connectivity between existing trails. Diverse user groups aim for safe corridors that link existing trails and popular destinations. As Cordova changes and grows it is important to maintain paths for travel around the community. The purpose of this document is to record each of these trails and develop a management plan to ensure the basic trail infrastructure is safe, usable, and the best it can be. Priorities are based upon public comment and the desire for safe, enriching outdoor experiences. Proposed projects are based upon improving user safety and trail connectivity, and developing e-maps, wayfinding and trail signage that highlights Eyak language and history.



Executive Summary

Cordova Trails Comprehensive Plan



Plan Purpose

The area outlined in red highlights the intended planning area for the Cordova Trails Plan (CTP). At the northern edge, the area includes Power Creek Trail, and at the southern end follows the trails off Whittaker Road.

The area currently includes a total of 18 formal trails comprising nearly 40 miles of maintained trails. There are multiple landowners across the planning area, namely US Forest Service, Eyak Corporation, State of Alaska, and the City of Cordova.

The CTP is a concerted effort that brought the community together for a holistic conversation about the future of the trails and covered space systems. The CTP is a guiding document for the community, local trail and covered space organizations, agencies, and elected officials that defines the Cordova trail network and identifies trail and covered space projects that are supported by the community. The CTP is a framework with community-developed values, vision, and goals that local officials and partner organizations can use to make investment and project decisions.

Guide to the Plan

Part 1: Introduction and Existing Conditions

Part 1 of the CTP provides an overview of the existing trail system, summarizes community input, key themes, and needs.

Part 2: Recommendations and Implementation

Part 2 of the CTP identifies both broad aspirations and specific implementation actions to guide trail and covered space projects that will achieve the trail and covered spaces that Cordova envisions.

About Cordova

History and Culture

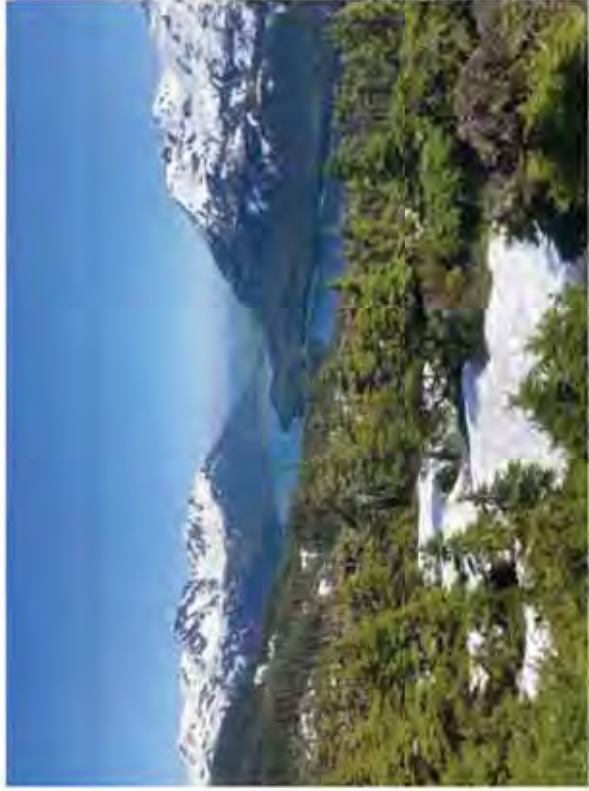
According to the oral history recorded by the **Yaakwdáat Lingít** (Yakutat Tlingit) and preserved through traditional song and dance, the **dAXunhyuu** (Eyak People) traveled on dugout canoes down the Copper River through an ice tunnel in the heavily glaciated landscape approximately three thousand years ago. Their ancestors, like the Ahtna Athabaskan, were proto-Athabaskan, living in the Copper River Valley above the massive ice fields blanketing the central and southeast coasts of Alaska during the last ice age. Their culture and language developed in isolation due to these extreme geographical conditions until their relatively peaceful assimilation with the much larger and aggressively expanding Tlingit nation. This blending of cultures and languages coincided with the time of European contact (beginning in 1741, but with more conflict, disease and devastating consequences beginning in the late 18th century).

At the turn of the 19th century, the Eyak had permanent villages on the northeast shore of Eyak Lake (where the lake flows into the river), on Mountain Slough, and alongside the Alaganik River, as well as occupying seasonal subsistence camps, including a salmon (and enemy) lookout over the river (close to where the Eyak River Trail is today). The Eyak lived at a dynamic crossroads, trading not only with the Tlingit to the southeast but also with the Sugpiaq (previously referred to as Chugach Eskimo and later Prince William Sound Alutiq) to the west, and with the Ahtna Athabaskans to the north. It wasn't until disease ripped through the communities that the remaining Eyak (the ones not already living in Tlingit villages) moved into Odiak (or Old Town) in Cordova proper, on the west side of Eyak Lake. Descendants of all of these Native groups continue to live and subsist in Cordova today.

Historically, the Eyak people subsisted on all five species of salmon, harbor seals, mountain goat, ducks, geese, upland birds, shellfish, and a spectrum of berries and edible plants. Small land mammals, bear, goats, and pinnipeds were fashioned into warm and waterproof clothing. They primarily used the spruce, hemlock, yellow cedar, and cottonwood for their 'yahd' (above-ground lodges similar to the Tlingit, versus the neighboring Sugpiaq's subterranean dwellings), heating, and art. For all these reasons—food, shelter, clothing, art, trade, and gatherings (potlatches, festivals, spiritual ceremonies, etc.), the Eyak people made trails, both where there were no waterways and in union with those routes. Out of respect for and in celebration of the Eyak dAXunhyuu people, the Cordova Trail's plan includes trail signage meant to honor Cordova's first people, and its hardiest hikers.

The indigenous Eyak (dAXunhyuu) people were Cordova's first inhabitants and trail blazers. For subsistence and cultural reasons (food, shelter, clothing, art, trade, and gatherings), the Eyak people made trails, both where there were no waterways and in connection with those routes. Some of Cordova's spectacular trails undoubtedly retrace the paths of these hunter-gatherer hikers.

About Cordova



The town is accessed via daily air service and the Alaskan Marine Highway. City and State-maintained roads connect the year-round residents of Cordova. The Copper River Highway (AK-10) begins at the Alaska Marine Highway Terminal and passes through downtown Cordova continuing east across the Copper River Delta, past Merle K. Mudhole Smith Airport at mile 13 and ending at mile 36. Prior to the Copper River shifting course and the ensuing erosion, the highway terminated at mile 50 at the Million Dollar Bridge where it crosses the Copper River between the Miles and the Childs Glaciers. The Forest Service still maintains a campground at mile 50 which is accessible by small plane or jet boat.

Geography

The Community of Cordova is located in the southeast of the Prince William Sound, bordered on the north by the Chugach mountains and surrounded by Chugach National Forest. The town itself is located in a valley between the Chugach mountains and Heney Ridge, an between Orca Inlet (Prince William Sound) and Eyak Lake, a large freshwater lake. Directly to the east of Cordova is the Copper River Delta, a 35 square mile wetland complex providing critical habitat for migratory birds, salmon and numerous other species of wildlife. The Copper River Delta is an important staging area for the western shorebird migration. Cordova and vicinity are the ancestral homeland of the Eyak **dAXunhuu** ("the people")

Cordova supports commercial fishing, sport fishing and subsistence fishing with salmon spawning occurring in intertidal streams, Eyak Lake and streams, and lakes and sloughs on the Copper River Delta, it is located within a coastal, temperate rainforest extending up to subalpine and alpine ecosystems. There is a small ski area and there is also a helicopter skiing company which operates out of Cordova in February and March. A Coast Guard cutter is stationed in Cordova and there is a Coast Guard air base at the Merle K. Smith Airport.

About Cordova



Flora and Fauna

Cordova lies at the nexus of a rich marine environment, lush rainforests, and a massive coastal wetland. Several trails span from sea level to the tops of mountains, allowing the trail user to immerse themselves in the diverse offerings of the terrestrial ecosystem's characteristic of the area.

Starting near sea level, several trails follow streams and provide an up-close look at where the sea meets the trees. Salmon race up these systems in the summer months, providing a spectacular show of marine derived nutrients making their way into the bellies of brown bears, eagles, and other opportunistic critters. The output from these encounters nourish the surrounding vegetation, providing nutrients for the towering Sitka Spruce and Western Hemlock tree, and productive blueberry and salmonberry shrubs.



Peatlands break up the dense forests, providing an opening for sun and a splash of plant diversity. Notable species include orchids, arnica, fleabane, and buckbean. Sundews and butterworts dot the sphagnum moss, slowly ingesting unlucky insects to get much needed nitrogen.

Above tree line, Dwarf Mountain Hemlock intermix with ericaceous dwarf shrubs such as bearberry and lichen. The zone above tree line offers stunning views of the dramatic surrounding landscape.

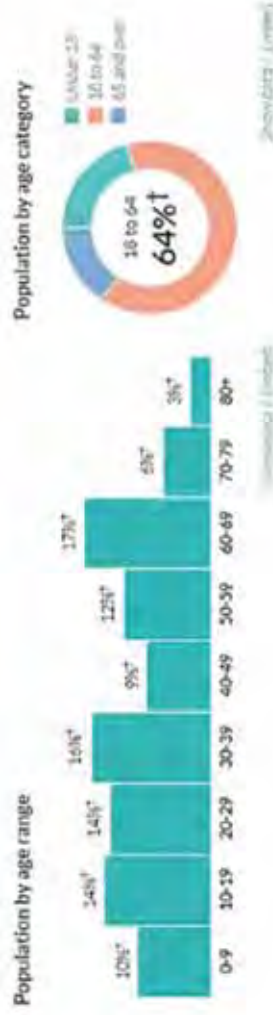
About Cordova

Age

36.9

Median age

about the same as the figure in Chugach Census Area (37.4) a little higher than the figure in Alaska: 35.3



Sex



Race & Ethnicity



<https://censusreporter.org/profiles/16000US0217410-cordova-ak/>

Economy

Cordova's economy relies heavily on commercial fishing and supports a large fishing fleet and several fish processing plants. The town's population doubles in size each fishing season as crab, halibut, and salmon are harvested. Fish harvesting and processing provides jobs to over half of the households in Cordova.

The retail industry, public administration, science and environmental organizations, healthcare and social assistance, recreation and tourism, all provide employment and add to the economy of Cordova. As does the US Coast Guard stationed in Cordova.

Transportation

Cordova is accessed by plane or boat. Daily scheduled jet flights and air taxis are available. It is linked directly to the North Pacific Ocean shipping lanes through the Gulf of Alaska. It receives year-round barge services and state ferry service

Harbor facilities include a breakwater, dock, small boat harbor, boat launch, boat haul-out, ferry terminal, and marine repair services. A 36-mile gravel road provides access to the Copper River Delta to the east.

About Cordova

Health and Wellness

- An increase in screen time has created a disconnect to our outside world. Connecting with nature has many measurable health benefits. Studies show more time spent in green spaces reduces stress levels, cortisol levels, muscle tension, and heart rates - all leading to better cardiovascular health.
- In addition to physical wellness, green spaces and a connection to nature plays an important role in mental wellness. There is a lower risk of depression and faster psychological stress recovery.
- Trails and spaces for people to gather are more crucial in today's world with isolation being another epidemic we are facing. In coastal Alaska, the amount of rain can have a negative effect on mental health, and giving more space for individuals to gather with friends and get outside to connect with the community and nature is enough of a propellant to create a comprehensive trails plan.
- Youth Engagement
 - The many benefits of outdoor recreation aren't exclusive to adults. Youth have full access to the internet and social media, and it disconnects them from their peers and negatively affects their mental health. Having a space to disconnect and reconnect with peers is essential to any community. Recreation is crucial for the social-emotional development of youth. Having a system of trail and recreation sites outside creates socialization opportunities for youth.
 - There are several studies on the effects of regular engagement with nature and the positive development of kids and youth.
 - Youth who engage with nature are more physically fit and in better overall health. One hour outside in nature can lead to significant improvements in youth's overall moods. It can also increase self-esteem and problem-solving skills.
 - Youth who spend more time recreating outside have higher academic achievement and brain function. It also increases creativity while decreasing behavior problems due to an overall decrease in stress.
 - Youth who spend more time outside have a connection to and care for nature and this carries into adulthood. Time spent outside as a youth as well as having role models who care for the environment have a positive correlation to environmental stewardship in adults.

Existing Plans

Listed below are existing plans on the local, state, and federal levels that all address the need for well-designed, sustainable trail systems, their beneficial effect on the health and well-being of community members and the economic benefits engendered by well-developed trail systems. Some of the existing plans include the USFS 2017 National Trail Strategy (Federal), the 2023-2027 Statewide Comprehensive Outdoor Recreation Plan (State) and locally the City of Cordova Comprehensive Plan, the City of Cordova Parks and Recreation Master Plan, and plans of the Sheridan Ski Club for the Mt. Eyak Ski Hill Recreation Area.

These plans range from general benefit and goals of trail plans to specific ideas as seen in the City of Cordova Master Plan. The City of Cordova Master Plan was adopted in 2019. The Parks and Recreation Commission is in the process of developing a new 20-year Master Plan, as the current plan was written in 2000. As the Cordova Trail Committee works under the auspices of the Parks and Recreation Commission, and there is a representative of the Commission at the Trail Committee meetings, this plan should dovetail nicely with the Parks and Recreation Commission Master Plan under development. The Trail Committee is also working closely with the Sheridan Ski Club, which oversees the Mt. Eyak Ski Hill Recreation Area, in order to coordinate plans. It is expected that the Cordova Trail Plan will be adopted by the City of Cordova and become part of the overall planning for the city.

Cordova Comprehensive Plan 2019

<https://www.cityofcordova.net/cordova-comprehensive-plan/>

USFS 2017 National Trail Strategy

<https://www.fs.usda.gov/managing-land/trails/national-strategy>

USFS 10 yr Trail Stewardship Challenge

<https://www.fs.usda.gov/managing-land/trails/10YTC>

2020 Chugach National Forest Land Management Plan

<https://www.fs.usda.gov/detail/chugach/landmanagement/planning?cid=stelprdb5408185>

SCORP

<https://dnr.alaska.gov/parks/scorp.htm>

Overview of Planning Process



Planning Team

City of Cordova Parks & Rec; Cordova Trails Ad Hoc Committee

July 2021

Assess existing trails and conditions

January 2022 - October 2022

Values, Mission, Vision, Goals, Stakeholder Assessment; Public Outreach; Drafting Plan

Summer 2022 - Public Outreach Phase 1

Letter to land managers; Newspaper Announcements; Public Flyer and Online Surveys; Tabling at Local Events

Fall 2022 - Public Outreach Phase 2

Open House Meeting; Survey; Interactive Map; Meeting with Land Managers

Spring 2023 - Public Outreach Phase 3

March 2023

Design Charrette in Cordova attended by RTCA, Nancy Casey, Cordova Trails Ad Hoc Committee; Cordova Parks and Rec, Sheridan Alpine Association. Site walks to proposed covered shelter locations and proposed ski hill trails.

Summer 2023

Cordova Trails Committee meeting 7/21/2023
Trails assessment

Values, Mission and Vision

Community: We embrace the inclusive and diverse community of Cordova.

Stewardship: We steward our assets and resources thoughtfully.

Opportunity: We create opportunities to connect places, people, ideas, and resources.

Kinship with Life: We embody the instinctive need to seek out natural places for rejuvenation and connection



The Mission of The Cordova Trails Committee is to create, enhance, maintain, and fund a community-driven, inspiring, and varied trail system for the benefit of all Cordovans and visitors.

The Vision is to have an inclusive, holistic, and well-managed local trail system that meets the diverse needs of the Cordova community and fosters connections through shared stewardship.



Goals

Goal 1: More and Better Trails

Priority is given to finish existing trails, expand existing trail system, improve connectivity between trails and construct new trails.

Goal 2: Inclusive Trails

Increase trail accessibility for all user groups and connectivity between trails.

Goal 3: Partnership and Collaboration

Establish successful collaboration with community stakeholders for the stewardship of Cordova's trail system by working with landowners for example, FS, City, NVE, Sheridan, etc. Accommodate community desires and encourage community support. Establish a work plan, organize volunteer groups and advocate trail use through tourism.

Goal 4: Trail Organization, Management, and Maintenance

Facilitate a governance group charged with the oversight, implementation, and management of Cordova's trail system. Develop consistent design & classification standards, wayfinding, and signage for existing and new trails. Establish sustainable trail management (sustainable trail construction/design, workforce, funding), and maintain a trail inventory document.

Goal 5: Funding

Identify and secure the financial resources to maintain, expand, and develop Cordova's trail system now and into the future. Create a 5 year plan - including maintenance and identify funding sources. Keep a record of funding opportunities & associated filing system and create documents to help apply for grants

Existing Conditions

Trail Users

Hikers

Cordova is a hiker and backpacker friendly destination. The trail system is easily accessible from town. Cordova's trail systems offer a wide variety of trail difficulties for hikers of all abilities. The trails access coastline, lakes, and a variety of ecosystems including, temperate, boreal, sub alpine, alpine and glacier. There is something for everyone! Climbers and paddlers also utilize the trail system to access crags, bouldering, frozen waterfalls, and rivers.



ATV

In Cordova All-Terrain Vehicles (ATVs), and motorcycles that are not licensed for use on the highways are the predominant off-road vehicles used. In most areas the organic material is 6-12 inches thick and acts as topsoil, beneath which lies a rocky gravel base. Due to their contribution to erosion and effect on plant life, trails supporting ATV use can most benefit from sustainable layout, surface hardening where required, and natural features that help to maintain trail alignment, while minimizing impacts on surrounding resources.

Bicyclists

The needs of trail bicyclists vary based on their experience and familiarity of the trail network. Casual trail bikers might prefer a wide trail that allows passing and side-by-side riding. Bicyclists may also prefer smooth, compact surfaces or paved surfaces with gentle to minimal slopes. Aggressive trail bikers, on the other hand, might enjoy more challenging trail experiences including the thrill of a narrow, single track trail, just wide enough to allow passage of one bicycle.

Existing Conditions

Trail Users



Snowmachiners

Snowmachiners technically do not require actual trails to operate. General routes have been developed over time, though these routes change frequently due to conditions.

Snowshoers

Snowshoers use existing trails for recreation in addition to using them for access to the backcountry. .

Skiers

Cross-country and Back-country skiing are a primary form of winter recreation and will continue to grow as trail improvements and grooming efforts improve. Thanks to the dedication and efforts of the Sheridan Alpine Association cross-country trails are becoming a reality. There are several areas that are being proposed for trail expansion and establishment. There is world class backcountry skiing in and around Cordova and there is a desire from the backcountry community to explore and expand areas within Cordova.

Skiing is a popular winter recreation sport in Cordova. Alpine skiers and snowboarders are served by Mt. Eyak Ski Area, which offers single-chair lift access to a variety of terrain, including groomed trails and a rope tow for beginners. Backcountry skiers and snowboarders have many options around Cordova, but most commonly access areas above Mt. Eyak Ski Area. Nordic skiing is also popular at many locations around Cordova. Trail improvements and grooming have expanded opportunities for both alpine and Nordic skiing in the Mt. Eyak area. Ice skaters use several areas around Cordova when conditions allow, most frequently Eyak Lake.



Subsistence

Users

- Fishing
- Hunting
- Foraging

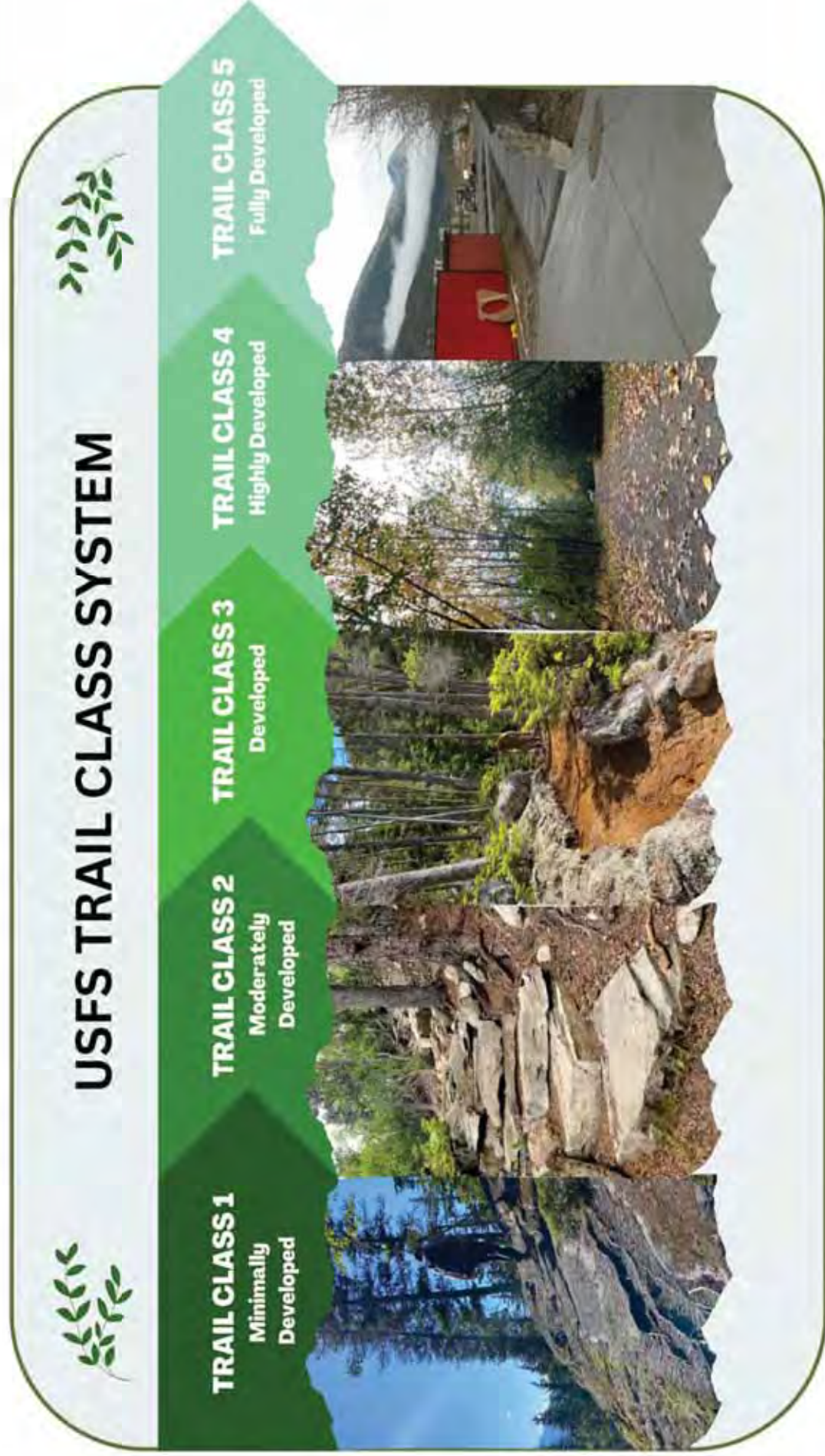
Trail Amenities

Trailhead and trailside amenities contribute to the overall user experience of the trail. What amenities are provided depends on the needs of current and potential user groups. Research, public input, and this plan will guide trail managers to identify what trailhead and trail corridor amenities would best serve current and anticipated trail users. Existing amenities include:

- Parking
 - At xx locations
- Signage
 - At xx locations
- Information kiosks
 - At xx locations
- Restrooms
 - At 5 locations
- Bike Racks
 - At xx locations
- Seating (benches, picnic tables, etc.)
 - At xx locations
- Public art
 - At xx locations
- Trash receptacles
 - At xx locations
- Cabins
 - At 4 locations

Existing Conditions

Trail Classes are general categories reflecting a trails development, arranged along a continuum. The Trail Class identified for the Cordova trail system prescribes its development scale, representing its intended design and management standards. Deviations from any Trail Class descriptor may be established based on trail-specific conditions, topography, or other factors, provided that the deviations do not undermine the general intent of the applicable Trail Class. This matrix is based on the established system used by the United States Forest Service (USFS). All MOS trails will have an identified class and are maintained to such standards:



Existing Conditions

Cordova Planning Area Map

Cordova Trails Comprehensive Plan



The area outlined in red highlights the intended planning area for the Cordova Trails Plan. At the northern edge, the area includes Power Creek Trail, and at the southern end follows the trails off Whittier Road.

The area currently includes a total of 18 formal trails, nearly 40 miles of maintained trails. There are multiple landowners across the planning area, namely US Forest Service, Eyak Corporation, State of Alaska, and the City of Cordova.

Below, each of the 18 trails are outlined in more detail with trail data and a supporting map.

Existing Conditions

1) Definitions of Trail Uses

Managed Use:

Managed Use is a mode of travel that is actively managed and appropriate on a trail, based on its design and management intent.

- Managed Use indicates management intent to accommodate a specific use.
- There can be more than one Managed Use per trail or trail segment.
- The Managed Uses for a trail are usually a small subset of all the allowed uses on the trail, that is, uses that are allowed unless specifically prohibited.
- There is a direct relationship between Managed Use and Trail Class; generally, one cannot be determined without consideration of the other.
- Not all Trail Classes are appropriate for all Managed Uses.

Designed Use:

Designed Use is the single Managed Use of a trail that requires the most demanding design, construction, and maintenance parameters and that, in conjunction with the applicable Trail Class, determines which Design Parameters will apply to a trail.

- There is only one Designed Use per trail or trail segment. Although a trail or trail segment may have more than one Managed Use and numerous uses may be allowed, only one Managed Use is identified as the design driver or Designed Use.
 - In some situations, when there is more than one Managed Use identified for a trail, the Designed Use may be readily apparent. For example, on a trail with Managed Uses of all-terrain vehicle and motorcycle, all-terrain vehicle use would be the Designed Use because this use requires wider tread widths and has lower tolerances for surface obstacles and maximum trail grades.
 - In other situations, involving more than one Managed Use, the Designed Use may not be readily apparent, as is often the case when there are fewer differences between the applicable sets of Design Parameters than in the example above. For example, on a trail that is actively managed for hiker and pedestrian, pack and saddle, and bicycle use, pack and saddle use would likely be the Designed Use because of the three Managed Uses, pack and saddle use generally has the most limiting design requirements. While the Bicycle Design Parameters are very similar to the Pack and Saddle Design Parameters, the Design Parameters for this trail may need to be adjusted to accommodate bicycles.

Current Use:

Current Use is the existing modes of travel the public are presently using on a trail. These are uses occurring on the trail regardless of the designed use or managed use.

Existing Conditions

Breakwater Trail

The Breakwater trail provides excellent views of the town of Cordova, its harbors, the surrounding mountains and islands, and sea and bird life. The trail starts at the beginning of the breakwater by the Veterans Memorial where there is a bench and garbage receptacle. The 3-foot-wide trail allows pedestrians to walk along the harbor's edge, ending with interpretive signage from Cordova Parks and Recreation Department and a bench for visitors to use. The trail is near Cordova's amenities, as well as harbor restroom facilities. The maintained trail ends before the breakwater turns towards the northeast, at 0.25 mi.

Location	In-Town 60.54357, -145.76956
Land Ownership	City of Cordova
Management Agency	City of Cordova (Parks and Rec. Dept.)
Trail Length	0.23 mi
Elevation Gain	0 ft
Min/Max Altitude	0 ft
Trail Type	Terra
Class	4
Current Use	Pedestrian
Designed Use	Pedestrian
Managed Use	Pedestrian
Trail Facilities	Harbor facilities include bathrooms; Signage featured at far North end of breakwater picnic table and garbage receptacle.
Color on Map	Purple



Existing Conditions

Odiak Pond Boardwalk

This out-and-back boardwalk trail takes visitors across Odiak Pond, walking over wooden boardwalks at the northeast corner of the pond after about 400ft of walking through the wooded area south of Cordova Community Medical Center. A covered pavilion at the center of the walk provides great viewing for pond-life, including birds, and features a picnic table for visitor use. The trail brings on the north side of Hollis Henrichs Park. Park facilities, including two restrooms, are provided at the trailhead.

Location	In-town Trailhead @ 60.54110, -145.75230
Land Ownership	City of Cordova
Management Agency	City of Cordova (Parks and Rec)
Trail Length	0.18 mi (one-way)
Elevation Gain	27 ft (total out and back)
Min/Max Altitude	Min. 20 ft; Max. 45 ft
Trail Type	Boardwalk
Class	5
Current Use	Pedestrian
Designed Use	Pedestrian
Managed Use	Pedestrian
Trail Facilities	Parking lot adjacent to Hollis Henrichs Park; Restroom facilities; elevated/uncovered pavilion in park; covered pavilion along boardwalk.
Color on Map	Pink



Existing Conditions

Eyak Mountain Trail

This historic trail begins where town meets the forest, passing through a mature spruce-hemlock forest before reaching open muskeg fields with stunning views of Cordova Harbor and Eyak Lake. The trail is a consistent, steady climb over rocks and roots, often crossing small inlets of flowing water. The trail brings hikers to the Mambo Ski trail, also to a flat area with a great viewpoint, looking south. Eyak Mountain Trail can be combined with the trails of the Mt. Eyak Ski Hill and further on to the Eyak Peak Trail, O'Leary Intertie Trail, and on to Crater Lake trails for a more challenging loop.

Location	Mt. Eyak Area Trailhead at 60.54515, -145.75162
Land Ownership	State of Alaska
Management Agency	City of Cordova (leased)
Trail Length	1 mi
Elevation Gain	646 ft
Min/Max Altitude	Min. 236 ft ; Max. 732 ft
Trail Type	Terra
Class	3
Current Use	Hiking, Biking
Designed Use	Hiking
Managed Use	Hiking
Trail Facilities	Parking lot at Trailhead; signage board at trailhead with and 8"x11" map
Color on Map	Blue



Existing Conditions

Mystery Meadows Trail System

This winter trail system is located at the base of the Mt Eyak Ski Area, beginning, and ending, on the west side of the chairlift. Snow conditions permitting, the trail system currently consists of 10 interconnected gentle undulating groomed corduroy loops, 12 feet wide. It circles, or borders, ponds, and meadows in the area, providing winter recreational opportunities for multi-user groups of differing abilities. A popular area that is easily accessed by the community, it provides the only sunny winter access to flat or gentle terrain located in a natural environment off the road system. Historically, this began as a cross country trail, with the first tracks being set in about 1988. This area receives frequent use with or without snow. Damage to the muskeg is present in some areas.



Location	Base of Mt Eyak Ski Area
Land Ownership	State of Alaska
Management Agency	City of Cordova (Sherian Alpine Association)
Trail Length	Varies by Loop
Elevation Gain	Varies by Loop
Min/Max Altitude	Min. 300 ft; Max. 500 ft
Trail Type	Terra
Class	3
Current Use	X-country Skiing; Snow Shoeing; Walking; Dog Walking
Designed Use	Winter Activities
Managed Use	Winter Activities
Trail Facilities	Parking Lot; Restrooms
Color on Map	Green

Existing Conditions

Hidden Cabin Trail

Originating at the Mt. Eyak Ski area base, this gravel trail ascends a part of the Hidden Valley Ski Trail and culminates at the Hidden Cabin, maintained by Sheridan Alpine Association (SAA). The Cabin can be reserved through the SAA and is accessible year-round. It includes an outhouse, firewood, and the cabin facility.

Location	Mt. Eyak Area Base of Trail @ 60.54985, -145.74947
Land Ownership	State of Alaska
Management Agency	City of Cordova (lease); Sheridan Alpine Association
Trail Length	0.46 mi
Elevation Gain	330 ft
Min/Max Altitude	Min. 374 ft; Max 742 ft
Trail Type	Winter and Terra
Class	3
Current Use	Hiking
Designed Use	Hiking
Managed Use	Downhill ski run and Cabin access trail
Trail Facilities	Cabin and outhouse; parking lot and ski hill amenities
Color on Map	Pink



Existing Conditions

General Ski Area Map

Mt Eyak Ski Area offers alpine skiing and snowboarding on Mt Eyak above the town of Cordova, Alaska. Mt Eyak uses an historic 1939 American Steel and Wire single chair lift, as well as a rope tow on the beginner slope. The base elevation is 400 feet, rising to 1200 feet at the top of the single lift, for a vertical drop of 800 feet. The annual snowfall averages 350". With approximately 30 different trail options, including a new easy trail down the hill, the area offers something for everyone (mteyak.org). A ski area map, made by [MapSynergy](http://MapSynergy.com), gives an overview of the downhill ski trails maintained at Mt. Eyak. The Sheridan Alpine Association manages the ski area.

Cross-country and Back-country skiing are a primary form of winter recreation and will continue to grow as trail improvements and grooming efforts improve. Thanks to the dedication and efforts of the Sheridan Alpine Association cross-country trails are becoming a reality. There are several areas that are being proposed for trail expansion and establishment. There is world class backcountry skiing in and around Cordova and there is a desire from the backcountry community to explore and expand areas within Cordova.

Skiing is a popular winter recreation sport in Cordova. Alpine skiers and snowboarders are served by Mt. Eyak Ski Area, which offers single-chair lift access to a variety of terrain, including groomed trails and a rope tow for beginners. Backcountry skiers and snowboarders have many options around Cordova, but most commonly access areas above Mt. Eyak Ski Area. Nordic skiing is also popular at many locations around Cordova. Trail improvements and grooming have expanded opportunities for both alpine and Nordic skiing in the Mt. Eyak area.



Existing Conditions

CAT Route @ Ski Trails

This route is maintained by the Sheridan Alpine Association (SAA) to serve maintenance needs in both summer and winter. It is open to visitors and provides great views of both Orca Inlet and Mt. Eyak from the top of Tripod Hill. The road is a fully gravel surface, bringing walkers to the top stop for the Mt. Eyak chairlift and the warming shelter. Users can find a picnic table at the summit of Tripod Hill for public use and great 360-degree views. The trail is designed for winter use but during the other seasons, you can see residents and visitors hiking and biking up the trail. During the winter, winter recreation users can ride the single seat chair lift to the top and shred down the trail.

Location	Mt. Eyak Area Base of Road @ 60.55063, -145.74075
Land Ownership	State of Alaska
Management Agency	City of Cordova (lease); Sheridan Alpine Association; End of CAT trail exits leased area onto State Land
Trail Length	0.59 mi
Elevation Gain	445 ft
Min/Max Altitude	Min. 756 ft; Max. 1183 ft
Trail Type	Winter and Road
Class	2
Current Use	Downhill ski run, hiking, biking
Designed Use	Downhill ski run and maintenance road
Managed Use	Downhill ski run
Trail Facilities	Single seat chairlift; parking lot and ski hill amenities
Color on Map	Pink

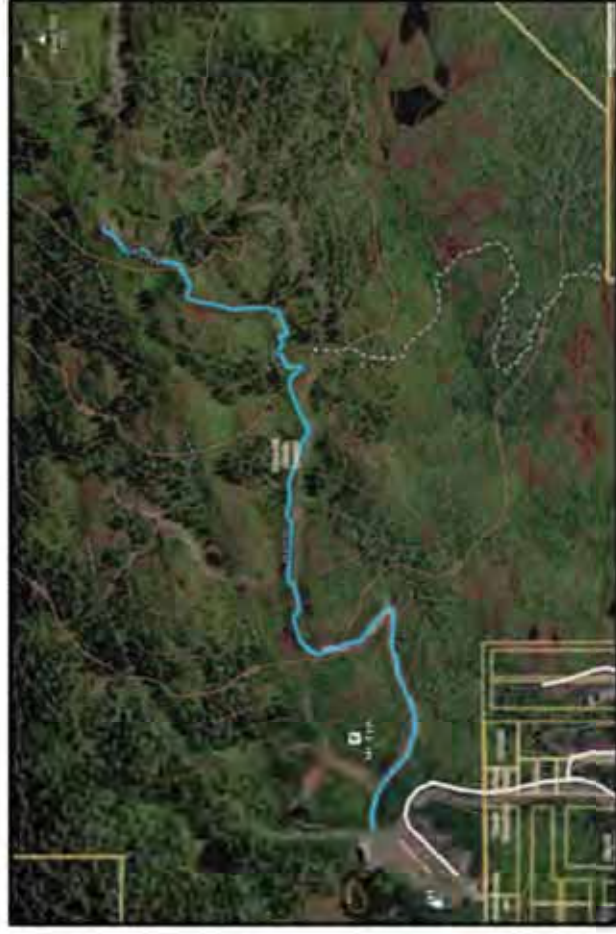


Existing Conditions

Mambo Ski Trail

This wide ski route/trail leads up over rocky slopes that offer a great view of Eyak Lake and the Orca Inlet. A little less than ¾ of a mile, the trail ends at Midway Shack where you can adventure towards the top of Tripod Hill and have a choice of going around the south end of Mt. Eyak to connect with the USFS Crater Lake Trail or make the steep climb to the top for an excellent panoramic view. The trail is designed for winter use but during the other seasons, you can see residents and visitors hiking and biking up the trail. During the winter, winter recreation users can ride the single seat chair lift to the top and shred down the trail. The Sheridan Alpine Association maintains the trails throughout the year and when snow is not on the trail, it has sections of gravel, grass, dirt, and woodchips with moderate to steep incline. Walking on the trail, hikers can find Alaskan berries to snack on along the corridor and picnic tables at the top of Midway Shack and Tripod Hill.

Location	Mt. Eyak Area Base of Run @ 60.54982, -145.74847
Land Ownership	State of Alaska
Management Agency	City of Cordova (lease); Sheridan Alpine Association
Trail Length	0.67 mi
Elevation Gain	788 ft
Min/Max Altitude	Min. 376 ft; Max. 1047 ft
Trail Type	Winter
Class	2
Current Use	Downhill ski run, biking
Designed Use	Downhill ski run
Managed Use	Downhill ski run
Trail Facilities	Single seat chairlift; parking lot and ski hill amenities
Color on Map	Blue

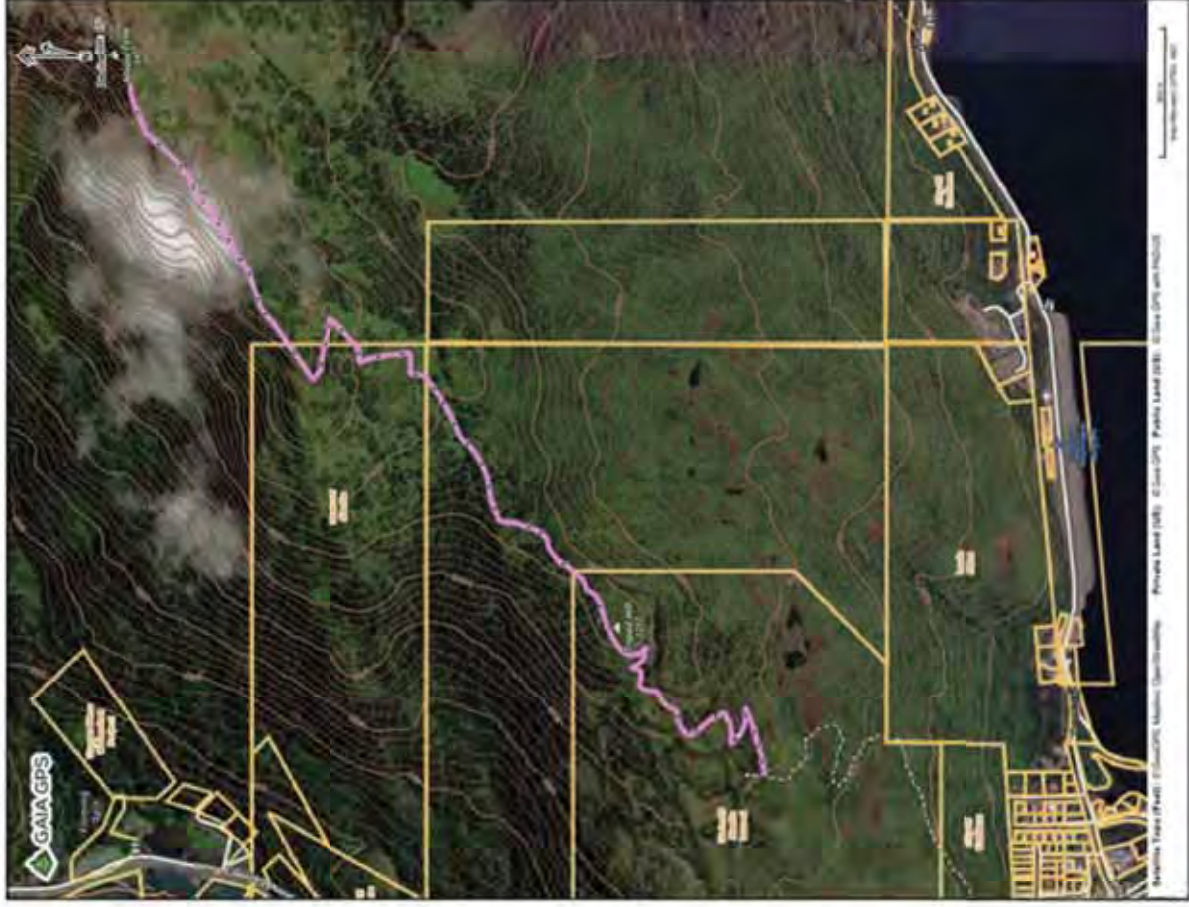


Existing Conditions

Mount Eyak Trail

The first mile and a half of this trail leads hikers uphill over open rocky slopes, muskeg meadows, and spruce forest while offering incredible views of Orca Inlet and Eyak Lake. The trail then splits leaving a choice between walking around the south end of Mt. Eyak (approx. 1.5 miles) to connect with the USFS Crater Lake Trail, via the O’Leary Intertie Trail, or making the steep climb to the top for an excellent panoramic view ([USFS](#)).

Location	Mt. Eyak Area Min. Altitude @ 60.55008, -145.73964
Land Ownership	State of Alaska
Management Agency	City of Cordova (leased); Sheridan Alpine Association
Trail Length	1.95 mi
Elevation Gain	1507 ft
Min/Max Altitude	Min. 732 ft; Max. 2303 ft
Trail Type	Terra
Class	1
Current Use	Hiking
Designed Use	Hiking
Managed Use	
Trail Facilities	Access via the top of the chairlift
Color on Map	Pink

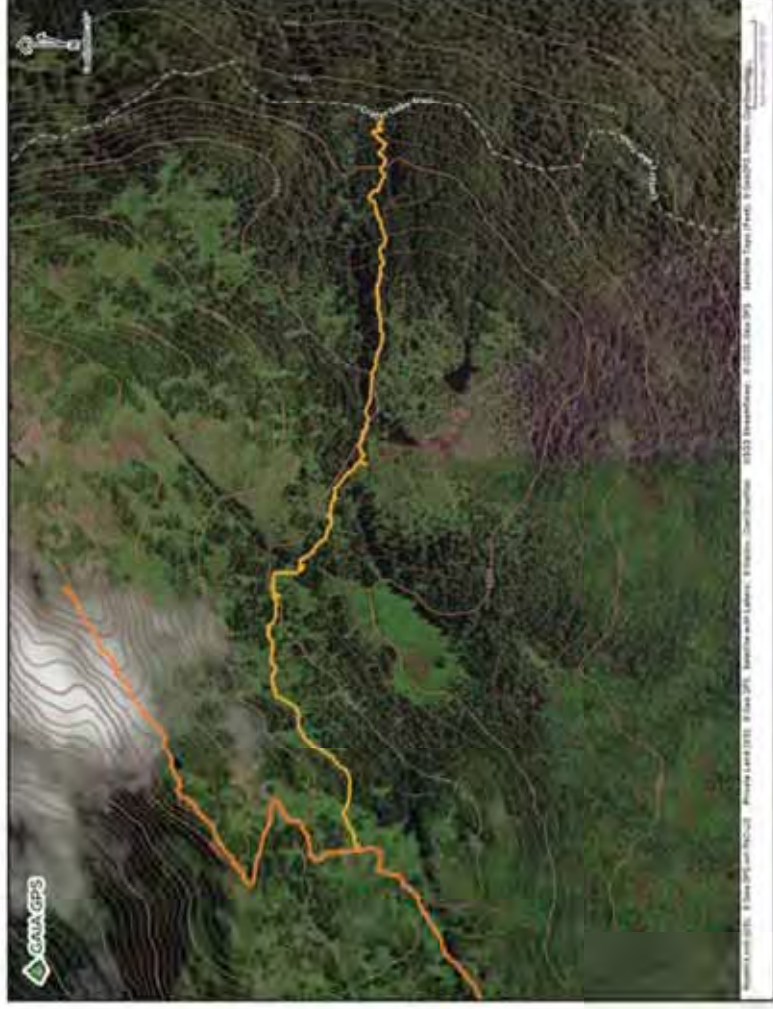


Existing Conditions

O'Leary's Intertie Trail

This connector route ties in Crater Lake and Mt. Eyak Trail with a larger interconnected trail system. Most hikers travel O'Leary's Intertie from east to west starting at mile 1.3 of Crater Lake Trail where it leads the hiker up several switchbacks to open muskeg meadows in Sunshine Bowl. The trail continues west maintaining elevation following a cutbank-out slope trail tread as it passes in and out of Sitka Spruce tree bands and open muskeg. There are excellent views of Eyak Peak, Eyak Lake, the Heney Mountain Range, Prince William Sound, and the town of Cordova. The trail eventually connects at mile 1.2 of Eyak Peak Trail where hikers can continue onto Eyak Peak or down to the many trails throughout the Eyak Ski Area.

Location	Mt. Eyak Area Eastern end @ 60.55743, -145.69866 Western end @ 60.55778, -145.72190
Land Ownership	State of Alaska
Management Agency	
Trail Length	0.96 mi
Elevation Gain	East to West: 523 ft West to East: 136 ft
Min/Max Altitude	Min. 1083 ft; Max. 1529 ft
Trail Type	Terra
Class	1
Current Use	Hiking
Designed Use	Hiking
Managed Use	Not actively managed
Trail Facilities	Parking lot @ Mt. Eyak Trailhead; Access from Crater Lake Trailheads
Color on Map	Orange



Existing Conditions

Crater Lake Trail

This trail begins at Skaters Cabin and vehicle pullout. The trail climbs a steep grade passing through mature spruce-hemlock forest to a picturesque alpine bowl where Crater Lake sits.

The first half climbs over rough, rocky sections with numerous switchbacks, and muddy areas as well as wood bridges. The second half continues to climb, but at a gentler grade, through hillsides that are abundant with wildflowers during the summer months. A bench is provided midway up the trail for a great view of Eyak Lake. At 1.2 miles O' Leary Intertie Trail provides access to the Eyak Ski Hill Trail. At the lake the hiker has the option to access the Alice Smith Intertie or climb Mt. Eyak. The entire loop from Crater Lake trailhead to Power Creek trailhead is 12 miles (USFS).

Location	Mt. Eyak Area Trailhead at 60.54685, -145.70853
Land Ownership	State of Alaska
Management Agency	USFS
Trail Length	2.15 mi
Elevation Gain	1687 ft
Min/Max Altitude	Min 97 ft; Max 1520 ft
Trail Type	Terra
Class	3
Current Use	Hiking, Skiing, Snowshoeing
Designed Use	Hiking, Skiing, Snowshoeing
Managed Use	Hiking, Skiing, Snowshoeing
Trail Facilities	USFS signage, City of Cordova Skaters Cabin with garbage receptacle and vault toilet.
Color on Map	Pink



Existing Conditions

Power Creek Trail

This trail follows Power Creek through a narrow drainage, then leads the hiker up several switchbacks into Surprise Valley. Midway, at the beginning of Valley, the recently built Cordova Electric Hydropower Dam can be seen. The last half of the trail follows the creek up the Power Creek Basin, passing by several beaver ponds and hanging glaciers to the Power Creek Cabin. The cabin site has wonderful panoramic views of the valley and surrounding mountains. At mile 3.0 the Alice Smith Intertie accesses the Crater Lake Trail. The entire loop from Power Creek trailhead to Crater Lake trailhead is 12 miles.

Location	Out of Town, Mt Eyak Area Trailhead @ 60.58780, -145.60900
Land Ownership	USFS
Management Agency	USFS (easement on 2.5 mi.)
Trail Length	4.2 mi
Elevation Gain	1564 ft
Min/Max Altitude	Min. 384 ft; Max 954 ft
Trail Type	Terra
Class	2
Current Use	Hiking, X-Country skiing, Biking
Designed Use	Hiking, X-Country skiing, Biking
Managed Use	Hiking, X-Country skiing
Trail Facilities	Parking area off Power Creek Road
Color on Map	Cyan

Existing Conditions

Alice Smith Intertie Trail

This ridge route is marked with rock cairns and has extraordinary views of Prince William Sound, Eyak Lake, the Copper River Delta, and the surrounding Chugach Mountains. Approximately halfway on the ridge, a small shelter (amenities not included) is available for day-use or overnight camping on a first-come-first-serve basis. There is excellent berry picking along the loop as well as good possibilities of viewing bears and mountain goats. Be aware of dense fog that can obscure the trail. The entire loop from Crater Lake trailhead to Power Creek trailhead is 12 miles (approximate time is 10 - 12 hours).

Location	Out of Town, Mt Eyak Area
Land Ownership	USFS, Eyak Corp
Management Agency	USFS
Trail Length	5.8 mi
Elevation Gain	2789 ft
Min/Max Altitude	Min. 488 ft; Max. 2060 ft
Trail Type	Terra
Class	2
Current Use	Hiking and Skiing
Designed Use	Hiking and Skiing
Managed Use	Hiking and Skiing
Trail Facilities	Access via Crater Lake Trail and Power Creek Trail. Shelter (not pictured).
Color on Map	Cyan



Existing Conditions

Meals Reservoir Trail

A narrow gravel road brings visitors to the Meals Reservoir, the source of drinking water for the City of Cordova. The maintained path varies from switchbacks and gradual climbs to steep, rocky ascents. Just before flattening out and arriving at the dam at the Reservoir, the Disc Golf Club has set up a 9-hole disc golf course starting near the dam and winding through the muskeg. The Reservoir itself provides a great sun-exposed spot to recreate above the city.

Location	Out of Town, Whitshed Road Parking @ 60.53692, -145.76123
Land Ownership	City of Cordova
Management Agency	City of Cordova (Water Dept)
Trail Length	0.62 mi
Elevation Gain	353 ft
Min/Max Altitude	Min. 69 ft; Max. 354 ft
Trail Type	Road
Class	3
Current Use	Hiking and Maintenance
Designed Use	Hiking and Maintenance Road
Managed Use	Maintenance Road
Trail Facilities	Small parking lot off Whitshed Road
Color on Map	Blue



Existing Conditions

Honey Ridge Trail

The first section of trail follows the contour of Hartney Bay and offers excellent birdwatching and wildlife spotting opportunities. Spawning salmon may also be viewed from mid-July to August. The first mile of trail is a "17(b)" easement. The next two miles moderately climb through spruce-hemlock forest and muskeg areas scattered with wildflowers. The last mile is a steep climb onto Honey Ridge following rock cairns above tree line. Once on the ridge you are treated to spectacular views of the Copper River Delta, the Prince William Sound, and Kayak Island (on clear days). There are many unique wood structures to assist hikers with traversing the varied terrain. The trail is muddy and wet in places, especially after heavy rain ([USFS](#)).

Location	Out of Town, Whittshed Road
Land Ownership	Eyak Corp, State of Alaska, USFS
Management Agency	USFS (easement)
Trail Length	3.88 mi
Elevation Gain	2487 ft
Min/Max Altitude	Min. 14 ft; Max. 1894 ft
Trail Type	Terra
Class	3
Current Use:	Hiking
Designed Use	Hiking
Managed Use	Hiking
Trail Facilities	USFS Signage at Trailhead
Color on Map	Orange



Existing Conditions

Eyak River Trail

This trail follows the west bank of the Eyak River for one quarter mile through mature Sitka spruce forest before opening into rolling muskeg meadows. At mile 1.5 the trail reunites with Eyak River for the remainder of the distance before reaching Mountain Slough. At the end of the trail the flora composition changes to a typical delta habitat of dense alder and grasses. This is a popular access site for anglers during the coho salmon season from August to mid-September. The trail is muddy and wet in places, especially after heavy rain. Portions of this trail are "17(b)" easements. [\[USFS\]](#)



Location	Out of Town, Copper River Highway
Land Ownership	Eyak Corp
Management Agency	USFS (easement)
Trail Length	3.20 mi
Elevation Gain	1031 ft
Min/Max Altitude	Min. 24 ft; Max. 194 ft
Trail Type	Terra
Class	3
Current Use	Hiking
Designed Use	Hiking
Managed Use	Hiking
Trail Facilities	Signage at trailhead; Parking available in a large pullout across the Copper River Highway
Color on Map	Green

Existing Conditions

North Ibeck Creek Trail

This trail is a heavily used 0.60-mile angler's access trail to popular sport fishing on North Ibeck Creek. The trail aids in spreading out anglers along the creek alleviating pedestrian congestion at the road where anglers tend to congregate and fish. It follows North Ibeck Creek starting at mile 7 of the Copper River Highway. It receives heavy use during Coho salmon sport fishing in mid to late summer. However, it has become a very popular early Spring and summer hiking trail for individuals and families looking for an easy hike near town in an open, sunny area of the Copper River Delta. The trail utilizes puncheons, overlapping rock steps, and step/run boardwalk to follow the creek accessing multiple gravel beaches where the public can relax and explore. [\[USFS\]](#)

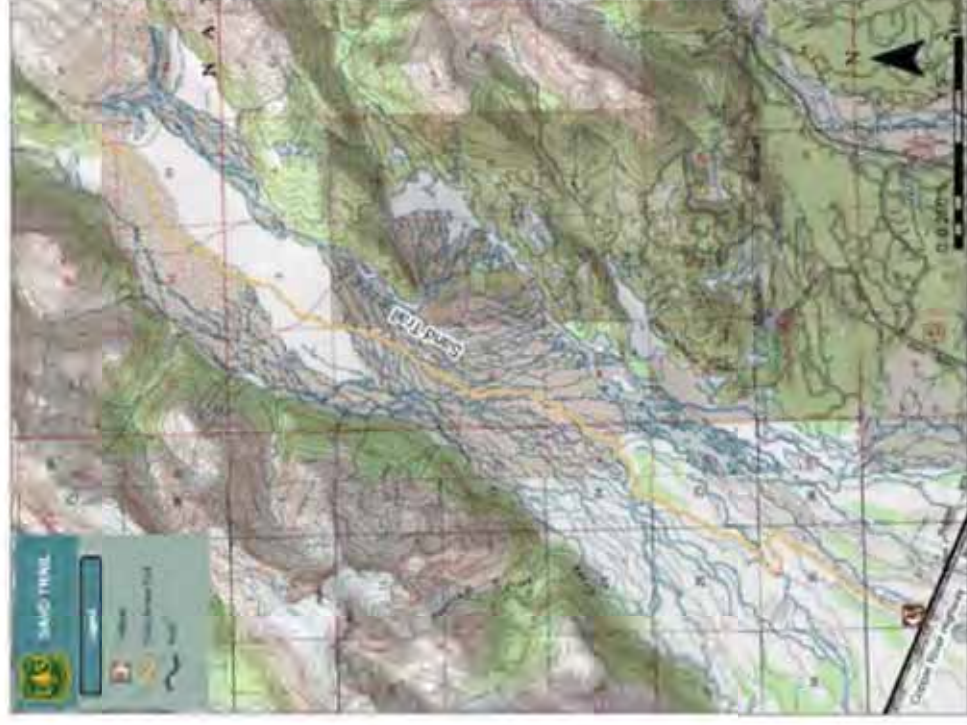
Location	Out of Town, Copper River Highway
Land Ownership	USFS
Management Agency	USFS
Trail Length	0.60 Mile
Elevation Gain	10 ft
Min/Max Altitude	Min. 30 ft; Max. 40 ft
Trail Type	Terra
Class	3
Current Use	Hiking
Designed Use	Hiking
Managed Use	Hiking
Trail Facilities	Signage at trailhead; Parking area available for 3 vehicles, garbage receptacle and portable outhouse during peak Coho salmon fishing.
Color on Map	Yellow



Existing Conditions

Sand Trail

Sand Trail begins at Mile 9 of the Copper River Highway providing motorized access up Scott Valley. The trailhead parking area has capacity for 8 vehicles with OHV trailers. The trailhead and trail are managed primarily for year-round OHV users. It is 12.2 miles on an easy class 3 motorized trail with little elevation change along most of the route. Scott Valley is the first location on the Copper River Delta east of Cordova where the public can find a variety of hunting, fishing, and recreation opportunities. In the Spring, summer, and fall most people OHV or bike up Sand Trail. In the Winter most people snowmachine while others ski up Sand Trail. The trail passes through dense alder with some black cottonwood for the first 6 miles then breaks out into open outwash gravels with spectacular views towards Scott Glacier and the Chugach Mountains. The trail ends at the northwest end of Scott Valley near the west face of Scott Glacier. [\(USFS\)](#)



Location	Out of Town, Mile 9 Copper River Highway
Land Ownership	USFS
Management Agency	USFS
Trail Length	12 Mile
Elevation Gain	260 ft
Min/Max Altitude	Min. 40 ft; Max. 300 ft
Trail Type	Terra
Class	3
Current Use	Motorized (ATV/Snowmobile), Bike, Ski
Designed Use	Motorized
Managed Use	Motorized
Trail Facilities	Signage at trailhead; Parking area available for 8 vehicles w/trailers, picnic table.
Color on Map	Yellow

Recommendations

Prioritization

Prioritization of the maintenance and improvements to Cordova's trail system drafted in this plan are based upon consideration of the following variables.

- Public Safety
- Frequency of Trail Use
- Availability of Trail for Multiple Use, including ADA accessibility
- Proximity to Town
- Ease of Project Completion
- Expense/Availability of Funds

Top trail projects are identified as:

- Trails that have not been maintained for a long period of time resulting in trail degradation.
- Trails that need to be improved for safety and accessibility, utilizing official trail building standards
- Trails which provide a good cross section of trail types, locations, and difficulty to meet the desires of multiple user groups within the community of Cordova and visitors to Cordova

Proposed Project

Trail Name	Breakwater Trail
Use	walking/hiking
Class	4
Length	.23 mile + 775 feet
Partners	City of Cordova/USFS/State-DNR

Work Priority Highlights

- Deferred Maintenance
- Extend the existing 1100-foot trail an additional 800 feet



Proposed Project

Trail Name	Odiak Pond Trail
Use	walking/hiking
Class	5
Length	.18 + 555 feet
Partners	City of Cordova/USFS/State-DNR

Work Priority Highlights

- Deferred Maintenance
- Extend the existing 500-foot trail an additional 1050 feet

Proposed Project

Trail Name	Power Creek Trail
Use	walking/hiking/biking
Class	2
Length	4.2
Partners	USFS

Work Priority Highlights

- Redesign the trail section through Power Creek Valley terminating at the Power Creek Cabin for Mountain Bike/Fat Bike users



Proposed Project

Trail Name	Mike O'Leary Trail
Use	walking/hiking
Class	3
Length	1.2
Partners	USFS

Heavy deferred maintenance



Work Priority Highlights

- Work with US Forest Service and Alpine Properties, John Harvill, to establish a trailhead parking area to access and construct a hiking trail to Scout Lake

Proposed Project

Trail Name	O'Leary Intertie Trail
Use	walking/hiking
Class	3
Length	x
Partners	City of Cordova/USFS/State-DNR



Work Priority Highlights

- Complete a variety of trail tread and trail structures reconstruction along the entire length of the trail

Proposed Project

Trail Name	Eyak Mountain Trail
Use	walking/hiking
Class	1
Length	1.95 miles
Partners	City of Cordova/USFS/State-DNR



Work Priority Highlights

- Complete a variety of trail tread and trail structures reconstruction along the entire length of the trail

Proposed Project

Base of Ski Area Trails



This area receives frequent use, with or without snow, and ideas, plans, and designs are being explored for a year-round system of interconnected trails for multi-user groups of varying abilities.

Proposed Project

Covered Spaces



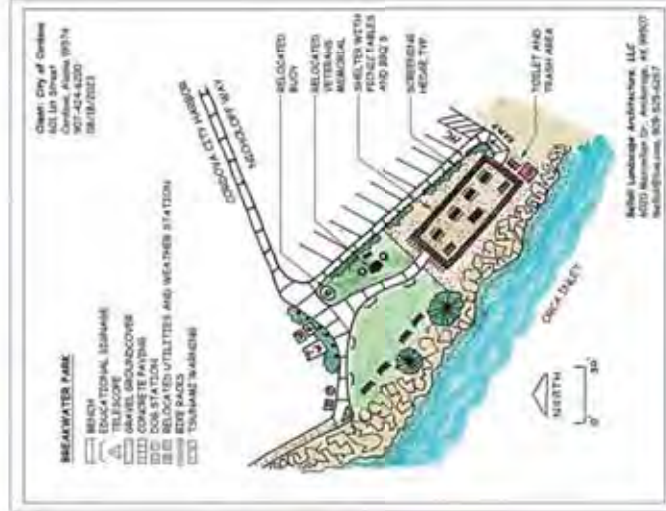
Cordova Covered Spaces Project

Proposed sites Fall 2022



Map modified 9/2022 Kinney Design via Arc GIS online

<https://visitcordovaalaska.org/cordovacoveredoutdoorspacesproject.html>



Maintenance

This is by far the most important and usually the most neglected aspect of trail systems. Trails are exposed to constant environmental conditions and erosional factors. It is imperative that there is staff and a budget in place to support the trail system. Without this the system will rapidly fall into disrepair especially in this area. The City of Cordova, State of Alaska DNR, and US Forest Service all play a role in this.

Annual inspection & inventory of trail assets, especially multi use trails helps ensure that damage is minimized, risks are identified, and repairs can be made in a timely manner, enhancing safety and protecting investments as well as natural and cultural resources.

Trails built and maintained within the USFS will follow the FS Standard Trail Plans and Specifications found at this web address: <https://www.fs.usda.gov/managing-land/trails/trail-management-tools/trailplan>

and follow the USFS Trail Construction and Maintenance found at this web address: <https://www.fs.usda.gov/t-d/pubs/htmlpubs/htmlpubs/htm07232806/index.htm>

The USFS and NPS tend to be the go-to organizations nationally on best practices on design, tools, and techniques for trail construction and maintenance.

- Trails that are on USFS managed lands will be built and maintained by the USFS. This includes the Mike O'Leary Trail and Power Creek Trail.
- The City of Cordova Parks & Recreation supported by partnerships with USFS, State DNR, and local organizations will be the lead in building and maintaining trails on City of Cordova and State of Alaska DNR lands. This includes the Breakwater Trail, Odiak Pond Trail, O'Leary Loop Trail, and Eyak Mountain Trail.



Maintenance

Routine Maintenance	Function	Frequency
Trail Triage	Essential trail failure repairs	Spring, summer, fall, post storm event
Condition assessment	Larger repair improvement planning	20% assets per year
Spring clearing and hazard assessment	Clear dead fall, identify and repair immediate hazards	May-June as trails clear, post storm event
Drain work, clear, repair, establish	Erosion control	Spring-summer, post storm event
Tread assessment, trail integrity, hazard removal, grade reversals, outslope repair	Trail durability, stabilization, erosion control	Summer-fall
Brushing	Improve sight lines, remove vegetative encroachment	Summer



Partnerships



National Park Service

XXXX



The Native Village of

EYAK

XXX



State of Alaska

XXX



US Forest Service

XXX

Appendix

Public Involvement Methods

Committee Meetings

XXXXXX

Stakeholder Meetings

XXXX

CORDOVA TRAILS

THE CITY OF CORDOVA TRAILS COMMITTEE IS CREATING A COMPREHENSIVE TRAIL PLAN. WE WANT YOUR INPUT!

OUR Vision
All trails, facilities, and equipment for all types of users to be built to the right of the Cordova town limits and focus connections through forest preservation.

Plan Focus
We are looking at trail management, development and design, maintenance, and trail safety. We are looking at trail management, development and design, maintenance, and trail safety.

Community Input
We seek feedback on the trail plan by participating with the committee to help us think through the plan. We are looking at trail management, development and design, maintenance, and trail safety.

Contact Planning team at: cordova@cityofcordova.com

City of Cordova

Cordova Trails Open House

When Tuesday, September 20th, 11am to 6pm.
Speaker and raffle prizes start at 6pm.

Where The Cordova Center, Lower Atrium

The City of Cordova Trails Committee wants your input on the Nature of Cordova's trails!

- This event will be an opportunity to discuss your ideas for trails, write them down, and put them on the map.
- Bring the kids! A map coloring activity will be provided.
- Coffee, tea, and cookies provided 6pm to 8pm.

Featuring... A FREE BIKE GIVEAWAY
From Cordova Gear

And enter to win... A free night at a cabin!

Don't forget to bring your phone to scan the QR code and use the interactive map!

Can't make the event? Take the survey and use the interactive map!

City of Cordova

Results

Draft Review and Comments

XXXX

Appendix

Wish Lists, Community Concerns & Comments

Trail suggestions:

- Lake Ave to 5th street
- Odiak pond trail; make loop
- Trail connecting 2nd St to chase Ave
- Trail behind orca lodge up to crater lake
- Trail up to Wolverine ridge from the road
- Trail to queens chair that doesn't require kayaks
- Old Sheridan mountain trail that goes straight up to the ridge - seems like an old logging trail that starts on the right of the trailhead
- Crater lake cabin or Eyak ridge below summit
- Bikes on ski hill
- 5th street/ Lake Ave
- CTC path 2nd street to Alaskan
- Railroad row/2nd St walk path to railroad tracks/park
- Whiteshed road path to ball park/ along steep section to Cordova
- Three-mile Bay

Appendix

Wish Lists, Survey Results, Community Concerns & Comments

	What do you love about Cordova trails?	What is your favorite trail?	What is missing from the trail experience in Cordova?
6/9/2022 14:30:54	There are various environments to hike in, e.g., mountain trails, muskeg trails, forest trails, etc. Our trails have had a lot of effort put into them, which is necessary for our ecosystem, climate, and landscape.	Depends on mood, weather, time, dogs, and who I'm hiking with.	<ol style="list-style-type: none"> 1. Developed and maintained trails/pedestrian paths in town. There are several under-developed right of ways that could be maintained as trails throughout town, such as Fifth Street from Lake to Browning and in general Ski Hill/Lake Ave area 2. Development of trails in and around the immediate town area. The trail behind the old Porterhouse building that connects to the Ski Hill trail is an incredible trail located right in town. It would be great to see more investment/maintenance in similar trails around town, specifically the hillside above Vina Young, the Ski Hill area north towards Hippie Cove, Hippie Cove area, Crater Lake trailhead back towards town, etc. 3. ADA trails. Hopefully if harbor boardwalk happens, that can be an ADA "trail." Currently Alaganic is the only ADA trail and is located far out of town. Perhaps there is boardwalk potential around Ski Hill, Nirvana Park, Hippie Cove/Science Center, or other areas? 4. Information/maps about trails for people new to town. I'm not sure people know about the Porterhouse trail or some of the pedestrian routes through town, such as the stairs up Fourth Street, Breakwater Trail, etc. 5. More investment/maintenance in some of our existing trails accessible from town, such as Mike O'Leary trail and upper trail to Eyak Peak.
6/9/2022 17:05:13	I love that they provide a way to access and recreate in our incredible surroundings; I love the diversity of views/habitats that we can experience on our trail system. I like that they aren't too crowded but do get a lot of use.	Crater Lake	I would like to see more hike-in cabins. I'd also like more peak/ridge climbs; also flat/low elevation trails are nice for kids & older folks who want to get out in nature.
6/9/2022 21:59:23	They are fun. We get out of town and into the forest. We get to explore new places.	Most of them need some upkeep. I like too many to have a favorite.	Some trails are not marked sufficiently.
8/10/2022 8:57:59	Ability to safely travel around Cordova, not in a car.	Ski hill	Safe side of the road paths for biking, walking, ATVs or snowmachines
6/11/2022 19:50:28	That we have them!	Ever single one of them are wonderful to be able to experience	Trail Connections
6/18/2022 9:08:09	I love that we have some trails in town, and many more out of town.	Power creek	Good trail out Whittshed Road
6/27/2022 11:02:19	how they are so accessible, so many great ones that begin right in town	ski hill, crater lake	an event re. hiking, like Mt. Marathon

Appendix

Wish Lists, Survey Results, Community Concerns & Comments

8/12/2022 16:11:02	How well maintained they are. Easy to navigate			Better mt bike trails and generally trails for bikes. The missing connection is the white shed ballfield with town.
8/12/2022 22:12:30	Accessibility and views	My Eyak		
8/12/2022 22:28:12	So easy to access and use	Reservoir area		An established 5 kilometer loop that could be used for high school cross-country running races instead of running them on the road.
8/12/2022 22:49:41	Proximity/access	Pipeline lakes		Bike trails
8/12/2022 23:23:25	Various terrain and well maintained trails by the Forest Service. Netting on the boardwalks is much safer to walk on and much appreciated!			
8/13/2022 0:21:14	Variety topography, distance, views	Mount Eyak summit on a clear day		Better signage for the Alice Smith Intense Trail near Crater Lake
8/13/2022 11:02:39	There are so many of them and they are all over!	Sheridan Glacier, Reservoir, Ski Hill		Poop bags & trash cans @ trailheads Nothing! Our trails our fabulous! I actually think that if Cordova is allocating more money to trails than they normally do then we have a problem. This money should go towards something we actually need like more teachers and police.
8/13/2022 23:59:55	Views	I don't have a favorite! They are all great in their own ways!		Maybe more signs about the area and history
8/15/2022 10:57:57	Their close proximity to town, ease of access and lack of crowds.	... Shendan Mountain but there are so many I love		More access points to the alpine
8/20/2022 10:06:55	Easy to get to many trails	Crater Lake trail		I would love it if there were more trails a half mile or longer in length one way in town that weren't steep but were of a moderate up and down grade I like hiking the ski hill and crater lake but sometimes I want something that isn't as steep but I don't want to drive to Pipeline or McKinley. I realize the terrain around town doesn't easily lend itself to that but there might be places where that is possible.
8/29/2022 20:40:08	How close some are to town for convenient lunch breaks, not crowded, epic views, beautiful bountiful rain forest.	It really depends on my mood, the weather and other factors. I've never been one who can pick out a favorite		Covered space for picnics, gathering, even lean to for camping
7/16- 7/17	Reservoir trail - close to town, great views!! Haystack - short, easy	Honey ridge		7.5 Mile dike improvements, brushing & maybe a covered place near the end, Mt. End. A board walk out to the lake/ welland E of lake Eyak wier & just W. of the dike trail.
7/16- 7/17	Shendan Glacier - the end reward is fantastic	Ski Hill - great view at top but steep for "old knees"		More accessible to town. Create a loop: hospital - Whitshed Rd bike path - across the lough to high school, back to the CR highway
7/16- 7/17		Fishing trail off Alaganik Slough road - fishing. Pipeline lakes trail - scenery, fishing, berry/ mushroom picking		Other ideas. Like to see sheltered spaces - 3 sided so rain doesn't blow in. Petersburg has some long shelters good for group picnics, events. 2 Fishing pier at pullout just beyond Hippole Cove. Easy access for kids. Short pier could access 40' water, suitable for halibut - Eyak Corp land will need some negotiation

Appendix

Wish Lists, Survey Results, Community Concerns & Comments

7/16-7/17						
7/16-7/17						
7/16-7/17						
7/16-7/17						
7/16-7/17						
7/16-7/17						
5/5 - 5/17	Terrain diversity, ridges (with views), along river, to mountain lakes	Crater Lake			Maintenance on existing trails as they wear.	
5/5 - 5/17	Accessibility	Haystack			More trails refurbished and covered picnic areas in the vicinity	
5/5 - 5/17	Accessibility	Crater Lake trail but there are so many, haystack etc, 5th and lake			More trail markings on trails, i.e. Reservoir, Ski Hill,	
5/5 - 5/17	That we have them!	All of them			More covered picnic areas near trails close to Cordova Town center	
5/5 - 5/17	It is a benefit to our community to have trails with easy access.	Ski Hill			It would be a nice addition to have covered areas near trails to get out of the rain	
5/5 - 5/17	Peaceful, scenic wildlife, pristine I like them alot	Crater lake			Places to get out of the rain, more connection of existing trails	
7/15/2022 18:02:26						
7/15/2022 18:22:54	The scenery!	Shendan Mountain			Picnicing sites!	
7/16/2022 16:21:38	Accessibility and well maintained.	Mt Eyak Trail			An extensive bike trail from town to the airport.	
7/16/2022 16:28:07	Accessibility and upkeep	Crater Lake Trail			Bike or running paths	
7/16/2022 16:34:17	They are very well maintained.	Ski hill trail			Hut to hut trail hiking	
7/17/2022 11:35:18	They're an awesome Connection to the beautiful wilderness of Alaska.	Mt Eyak is at the top of the list followed closely by Hensy Ridge.			I think the development of a trail up to Mt Eccles would be a great addition in the future if possible. Besides that, all other trails are well maintained and accessible.	
7/17/2022 14:35:17	Informative	Crater Lake			Signage on Ski Hill trail	
7/17/2022 16:42:33	Yes	Surprise Valley or Power Creek			Don't know right off. Have really liked the lopped trails.	
8/12/2022 12:29:16	There are so many and varied	Pipeline			I love it	
	I love trails that have good visibility for bears, humans, etc, but still feel like you can connect with nature				BIKE trails!!! Especially kid-friendly bike trails, or lower grade trails that don't have intense inclines. Ski hill would be a fantastic place for more trail development, but would love to see a bike trail network throughout town that keeps kids further from cars. But also without dense brush coverage because of bears.	
8/12/2022 12:48:02	Good views are also a plus.	Ski Hill, hands down Reservoir close second			Would also love to see a less steep, and longer trail to access the reservoir area for hikers of varying abilities or those with joint issues.	
8/12/2022 14:28:11	There are many readily accessible	Mt Eyak - its right out my back door			More benches places to rest and enjoy the views.	
8/12/2022 15:25:34	The ski hill trail system	Hidden valley loop			Covered picnic Areas	

Trail Maintenance Volunteer Programs and Process

The Colorado Trails Foundation

<https://coloradotrail.org/volunteer/>

The Appalachian Trail Conservancy

<https://appalachiantrail.org/get-involved/>

American Trails

<https://www.americantrails.org/>

Adirondack Mountain Club

<https://adk.org/category/volunteers/>