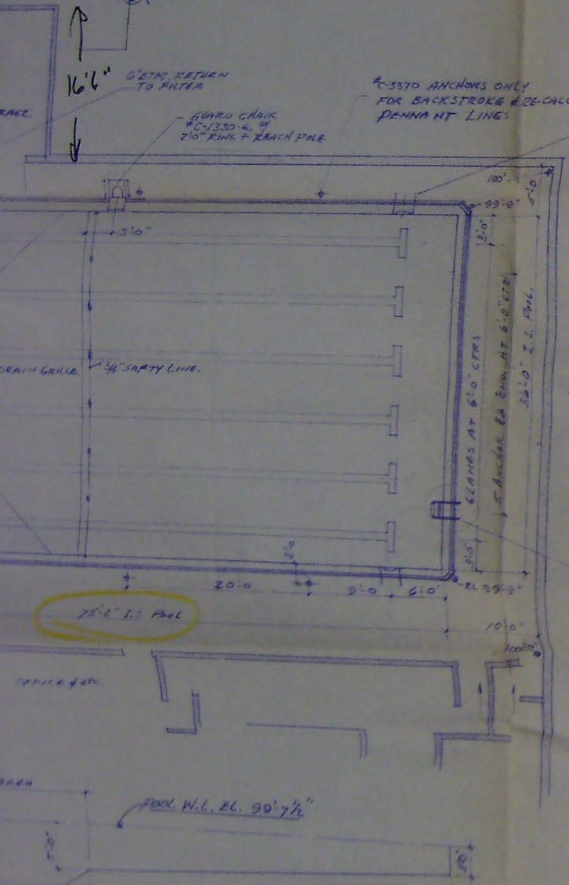
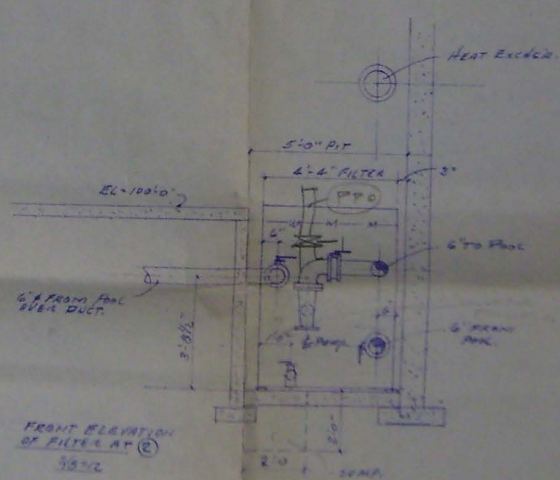
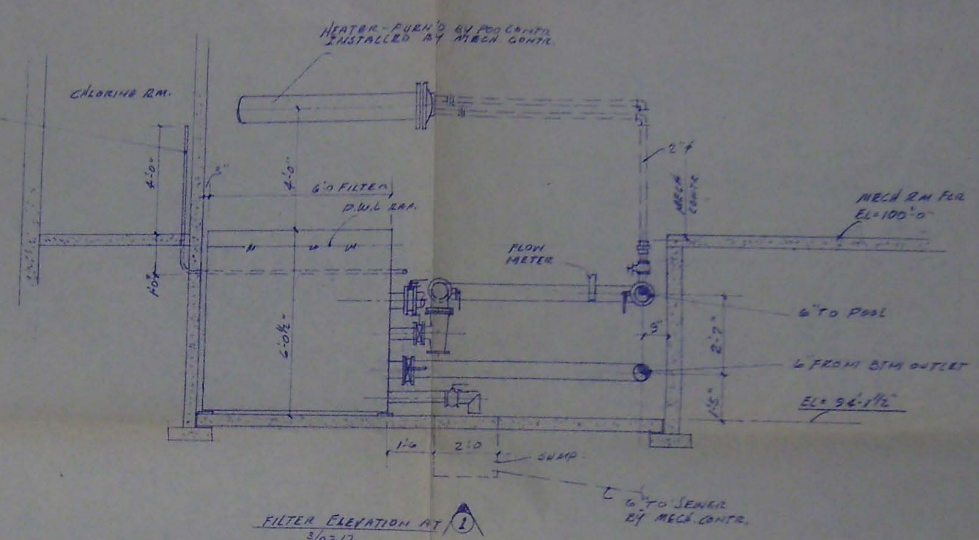


WATER FEED ROOM
FILTER - 600 GPM CAPACITY
WASTE
TO
MECH. CENTER
BY MECH. CENTER

No Specs Needed

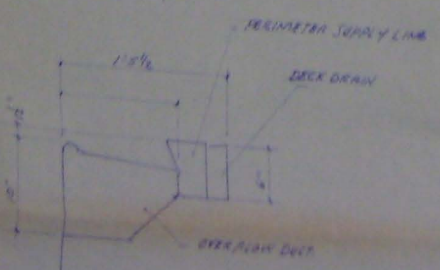
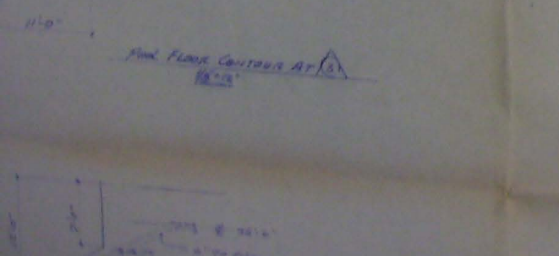


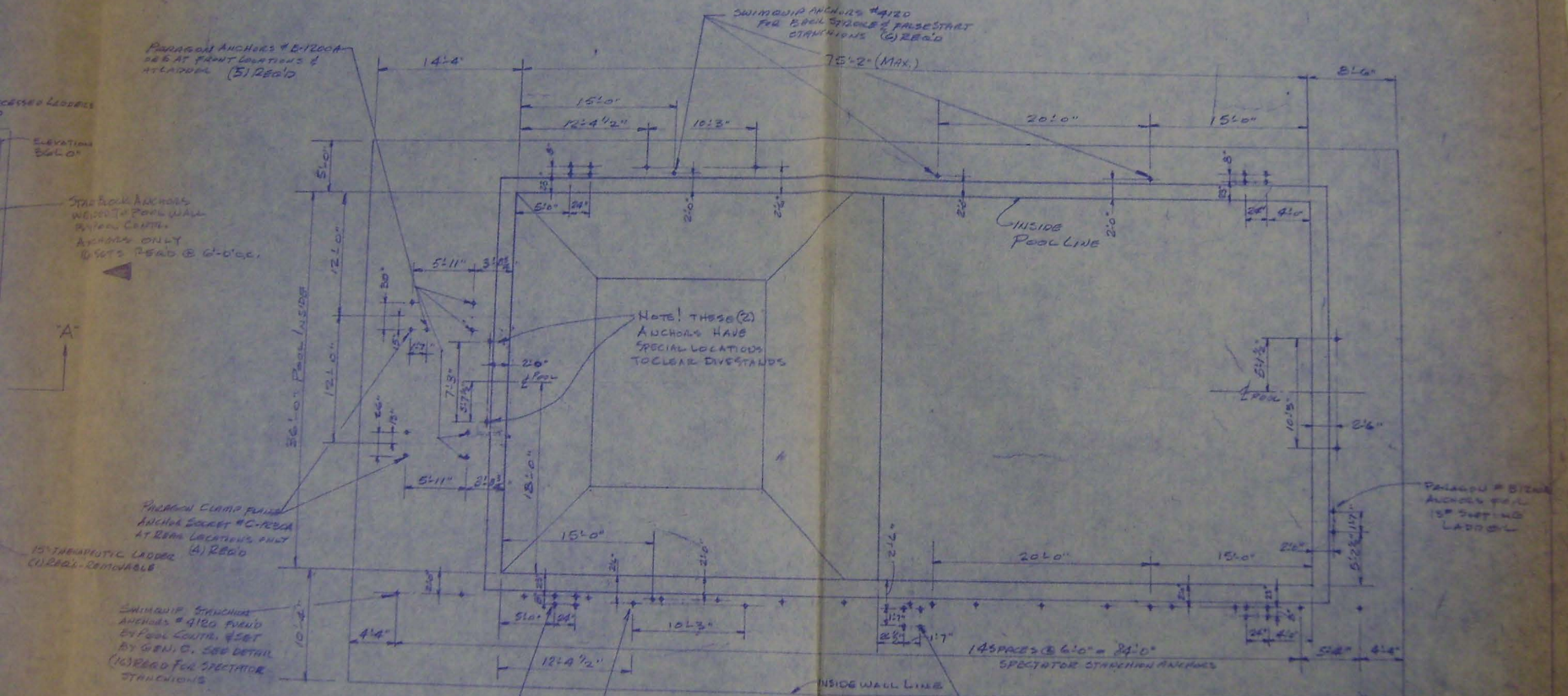
1" DIA ALUM PIPE BY MECH. CONTR.



FILTER DATA

PPD 10000
PINE CAP - 150,000 GAL
SAC TREN-DECK = 200 GPM
FILTER AREA = 200'30" FT
FILTER FLOW RATE - 150 GPM/HR
PUMP - 1/2 HP LOW PRESS - 1500 - 1000 RPM
AT SENT FOR TESTS IN 2000
CALCULATOR - 150000 PUMP TREN-DECK
SCALE - 1/4" = 1'00" (10000)
NOTES - 2000 GPM IN 2000 PUMP
W/EL DUCT W/EL DUCT FOR HEAT-EX





PLAN OF ANCHOR INSTALLATIONS

SCALE 1/8" = 1'-0"

NOTE: ALL ANCHORS TO BE GROUNDED BY ELECT. CONTR. BEFORE POURING CONCRETE DECK.

ALL ANCHORS TO BE PROVIDED BY POOL CONTR. EXCEPT AS NOTED.

PARAGON ANCHORS # E-1200A 3/8" AT POINT LOCATIONS & ATTACHED (B) 250'0"

SWIMMING ANCHORS #A20 FOR POOL STAIRS & PALESTRA STAIRWAYS (B) 250'0"

7E-2" (MAX.)

NOTE: THESE (2) ANCHORS HAVE SPECIAL LOCATIONS TO CLEAR DIVESTANDS

ELEVATION 86'0"

SPALL BLOCK ANCHORS WELDED TO POOL WALL WITHIN CENTER ANCHORS ONLY (B) 250'0" @ 6'-0" OC.

A

FRANCHISE CLAMP PANEL ANCHOR SOCKET # C-1000A AT REAR LOCATIONS ONLY (A) 250'0"

15" THERAPEUTIC LADDER (L) 250'0" REMOVABLE

SWIMMING STAIRS ANCHORS # Q100 PROVIDED BY POOL CONTR. #50' BY GEN. C. SEE DETAIL (A) 250'0" FOR SPECTATOR STAIRWAYS

SWAN # A3-100B ANCHORS FOR LADDER GRAB RAILS (B) 250'0"

PARAGON # C-3270 ANCHORS FOR WATER PAWS CAGE (B) 250'0"

PARAGON # B-1200A ANCHORS FOR 15" THERAPEUTIC LADDER

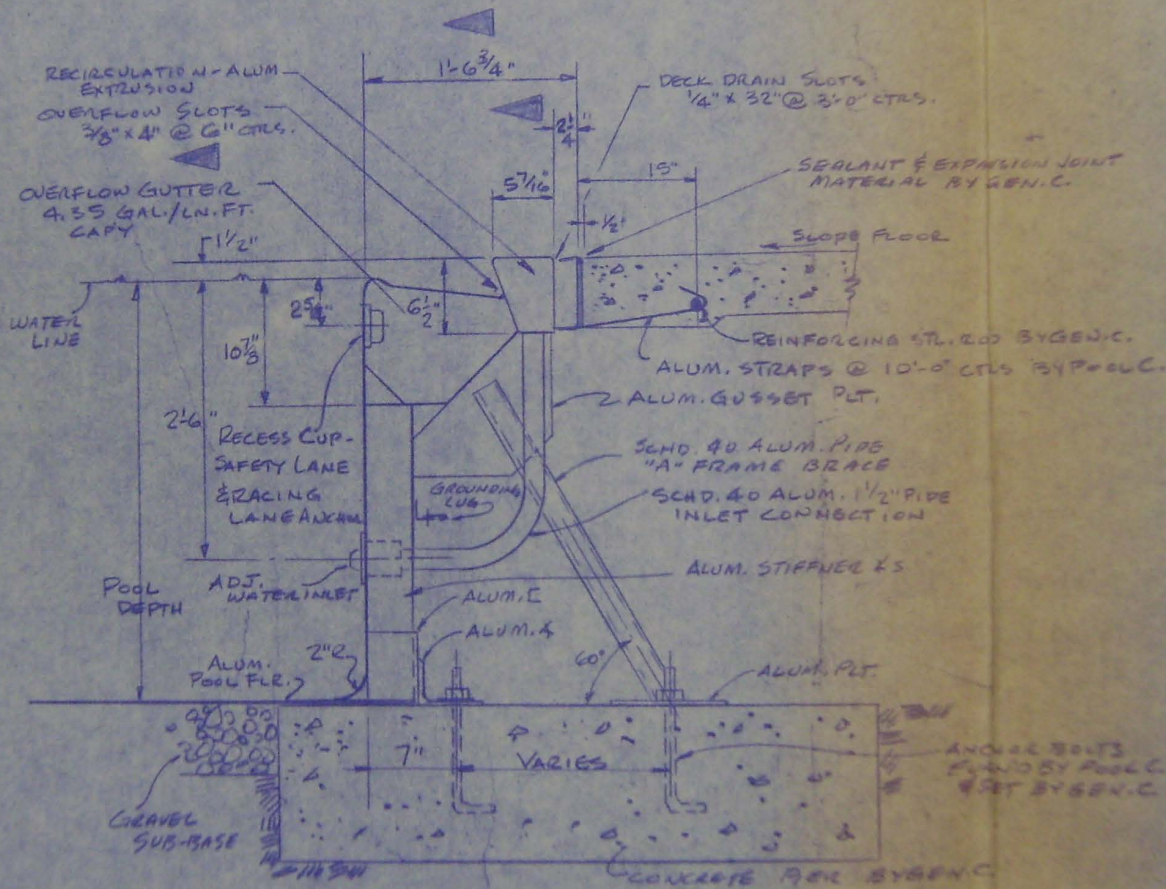
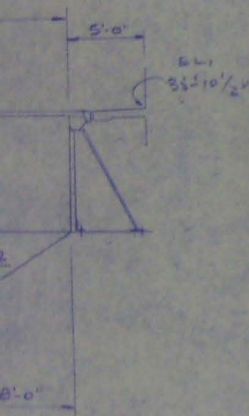
PARAGON # B-1200A ANCHORS FOR 15" THERAPEUTIC LADDER

14 SPACES @ 6'-0" = 84'-0" SPECTATOR STAIRWAY RAILINGS

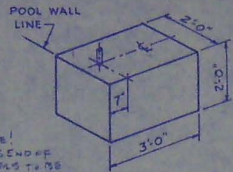
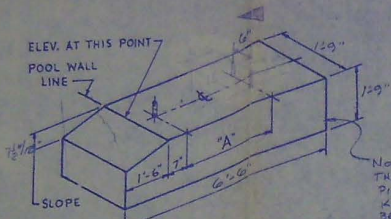
INSIDE WALL LINE

INSIDE POOL LINE

POOL SECTION "A-A"
SCALE 1/8" = 1'-0"

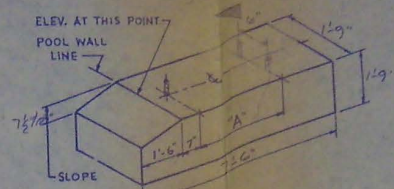


TYPICAL POOL WALL SECTION
SCALE 1/8" = 1'-0"



NOTE!
THIS END OF
PIERS TO BE
KEYED INTO
BEARING WALL

CORNER PIER C-1
(4) Each

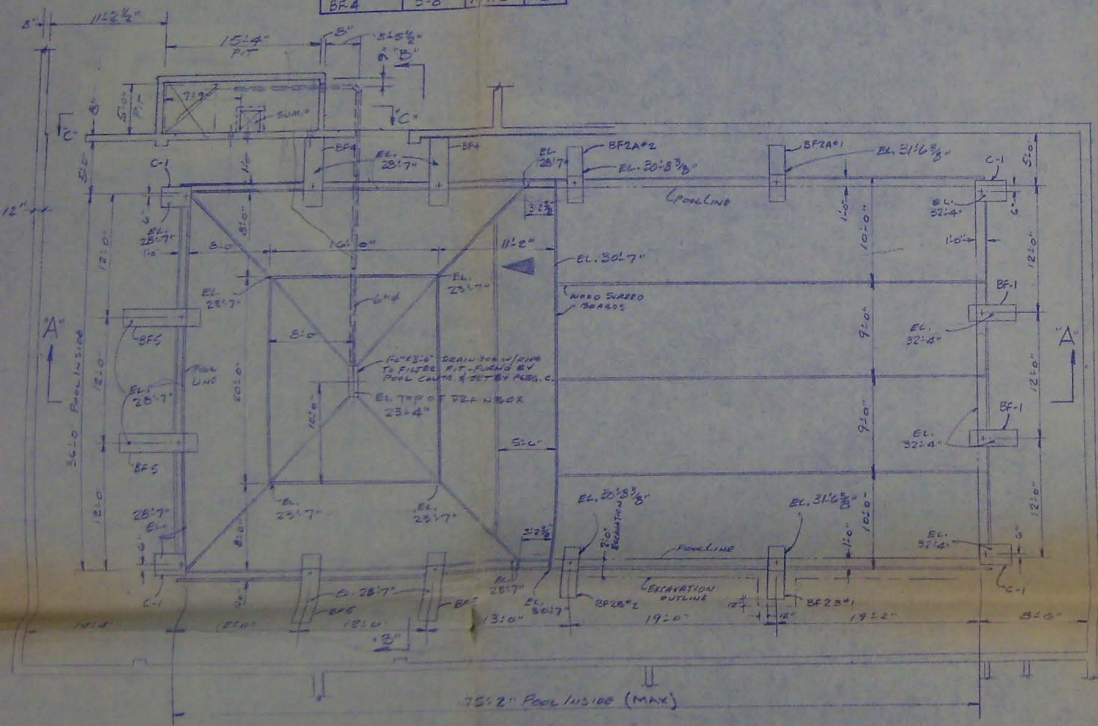


'A' FRAME PIER BF-5

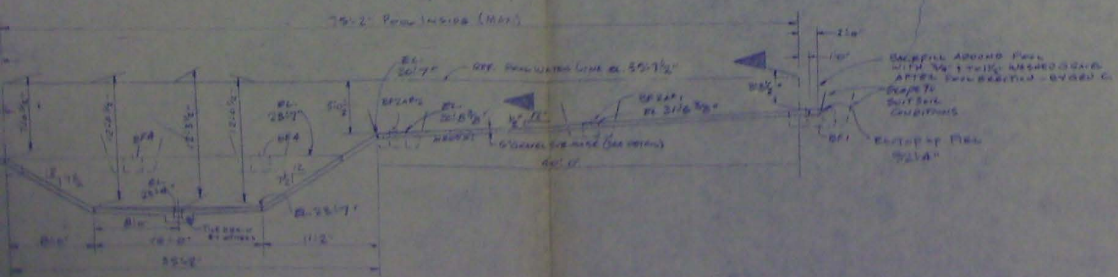
PIER No.	A' DIM.	SLOPE	REED
BF-5	3'-0"	7 1/2"	4

'A' FRAME PIER BF-4

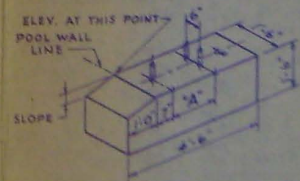
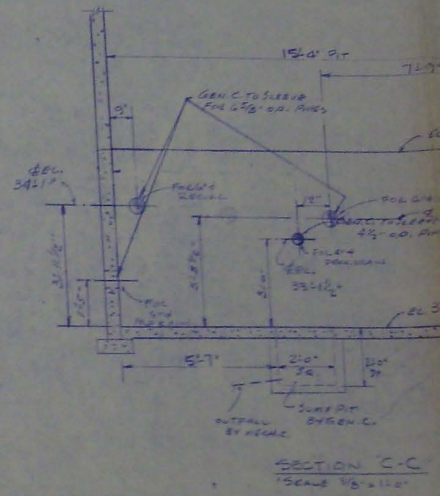
PIER No.	A' DIM.	SLOPE	REED
BF-4	3'-0"	7 1/2"	2



EXCAVATION PLAN
SCALE 1/8" = 1'-0"



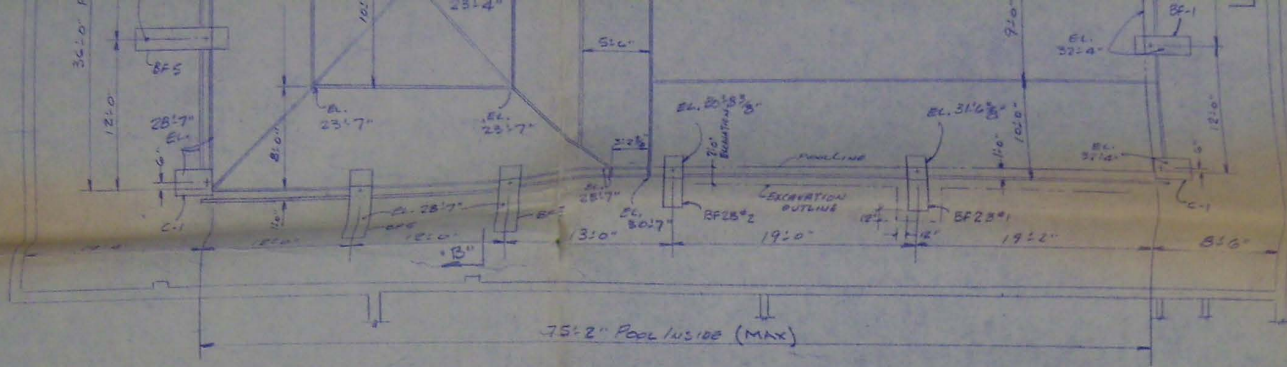
POOL SECTION AA



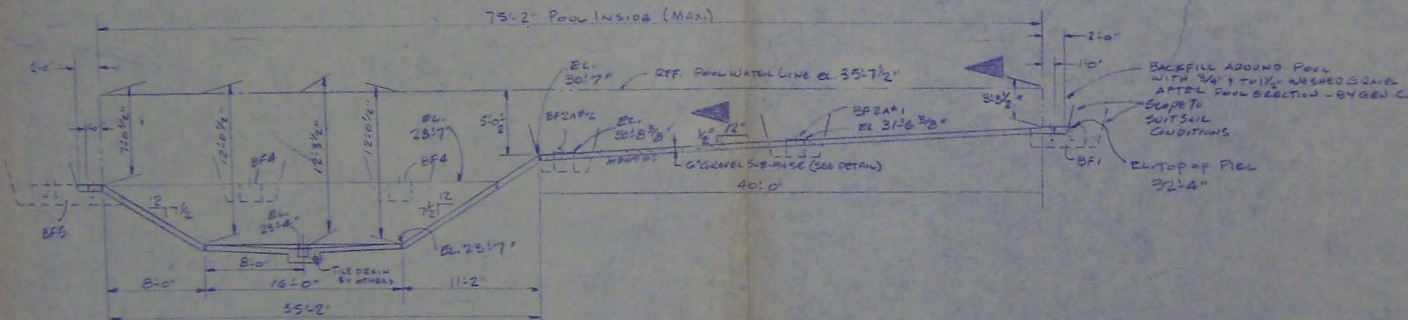
'A' FRAME PIER BF-1

PIER No.	A' DIM.	SLOPE	REED
BF-1	10'-0"	7 1/2"	2

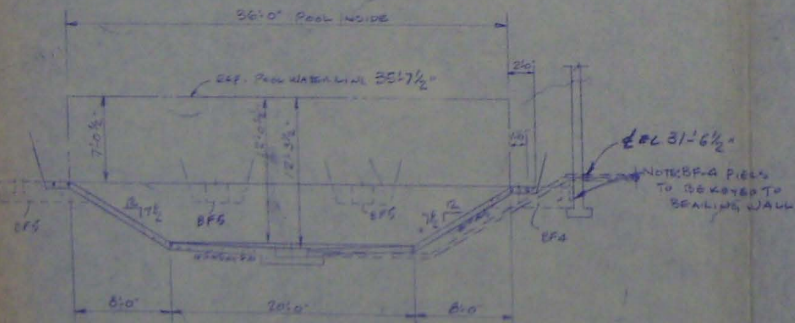




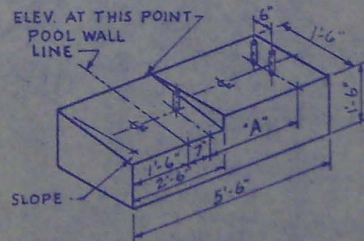
EXCAVATION PLAN
SCALE 1/8"=1'-0"



POOL SECTION "A-A"
SCALE 1/8"=1'-0"

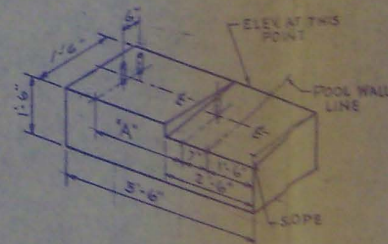


POOL SECTION "B-B"
SCALE 1/8"=1'-0"



"A" FRAME PIER BF-2B

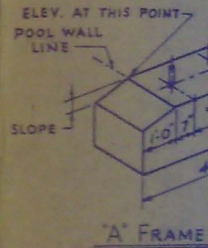
PIER No.	"A" DIM.	SLOPE	REQD.
BF-2B*1	2'-0"	1/2" / 12"	1
BF-2B*2	2'-6"	1/2" / 12"	1



"A" FRAME PIER BF-2A

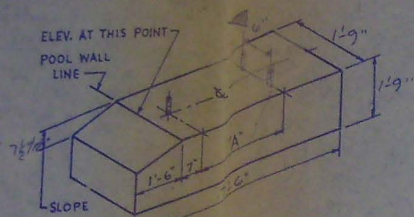
PIER No.	"A" DIM.	SLOPE	REQD.
BF-2A*1	2'-0"	1/2" / 12"	1
BF-2A*2	2'-6"	1/2" / 12"	1

- GENERAL NOTES
1. CORNER PIER REQUIRE STE...
 2. ALL CONCRET OTHERS
 3. ANCHOR BOLT CONTRACTOR 3/4" x 12" LONG ALL CADMIUM
 4. PIERS DESIGN SOIL PRESSURE



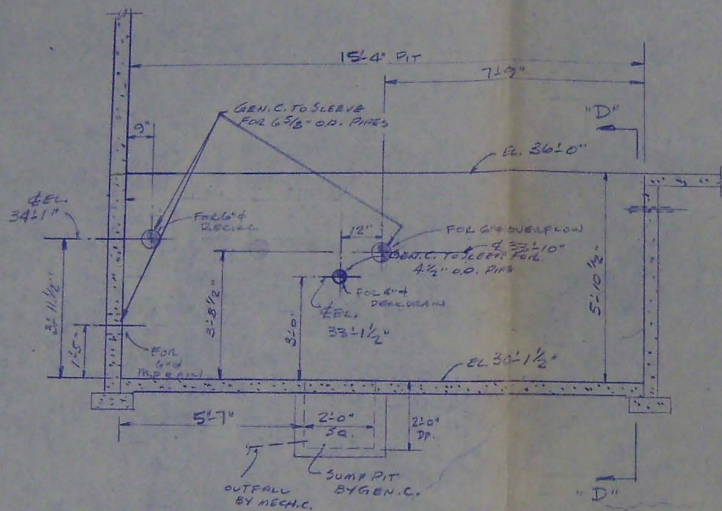
"A" FRAME

PIER No.	"A" DIM.
BF-2A*1	1'-0"
BF-2A*2	1'-0"

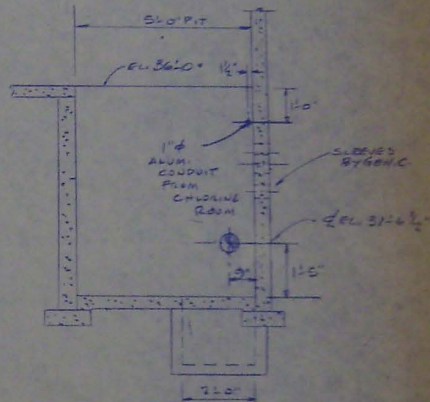


"A" FRAME PIER BF-5

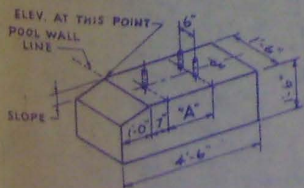
PIER No.	A' DIA.	SLOPE	Reob
BF-5	3'-8"	1 1/2"	4



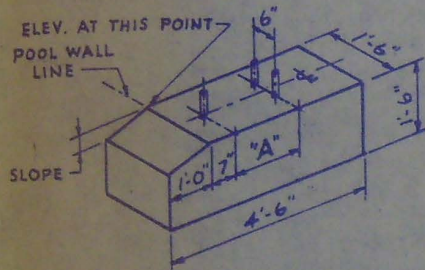
SECTION "C-C"
SCALE 3/8" = 1'-0"



SECTION "D-D"
SCALE 3/8" = 1'-0"

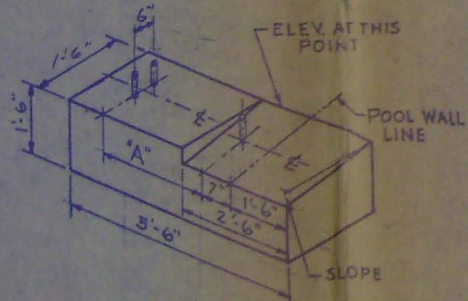


"A" FRAME PIER BF-5



"A" FRAME PIER BF-1

PIER No.	"A" DIM.	SLOPE	REQ'D
BF-1	1'-7"	1/2"/12"	2

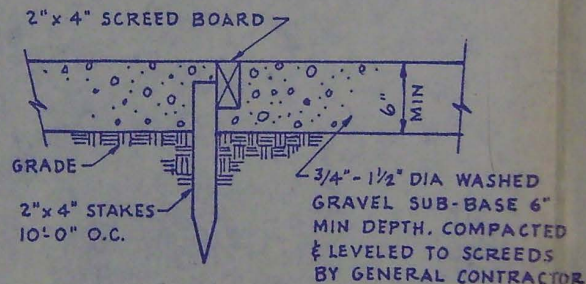


"A" FRAME PIER BF-2A

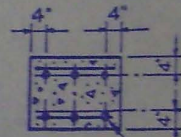
PIER No.	"A" DIM.	SLOPE	REQ'D
BF-2A#1	2'-0"	1/2"/12"	1
BF-2A#2	2'-6"	1/2"/12"	1

GENERAL NOTES:

- CORNER PIERS DO NOT REQUIRE STEEL REINFORCING
- ALL CONCRETE WORK BY OTHERS
- ANCHOR BOLTS BY POOL CONTRACTOR. 3" PROJECTION - 3/4" ϕ x 12" LG WITH 3" HOOK. ALL CADMIUM PLATED - SET BY GEN.G.
- PIERS DESIGNED FOR 3000 R.S.F. SOIL PRESSURE



TYPICAL SCREED DETAIL



6-#5 REINFORCING RODS
LENGTHWISE WITH #4 RODS
6" O.C. CROSSWISE

SECTION VIEW
REINFORCING STEEL -
"A" FRAME PIER

◀ DEVOTES VARIANCE WITH ARCH. DWS.

NOTICE

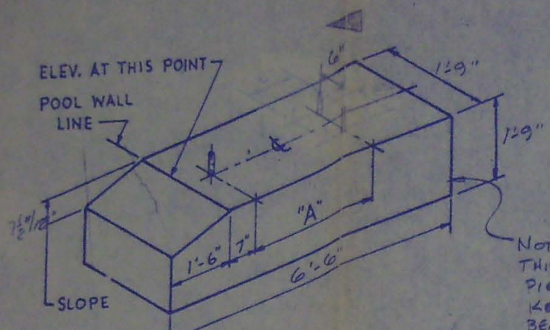
THIS DRAWING AND ALL FEATURES SEPARATELY OR COLLECTIVELY DISCLOSED THEREBY OR EMBODIED THEREIN, ARE THE PROPERTY OF CHESTER PRODUCTS, INC. THE DRAWING SHALL NOT BE REPRODUCED OR COPIED, AND MUST BE RETURNED IMMEDIATELY UPON REQUEST. NO INFORMATION EMBODIED THEREIN SHALL BE COMMUNICATED, DISCLOSED, OR USED IN ANY MANNER, IN WHOLE OR IN PART, EXCEPT TO THE EXTENT PREVIOUSLY AUTHORIZED IN WRITING BY THE COMPANY.

REV. NO.	DATE	BY	DESCRIPTION	ISSUE NO.	DATE	BY	DESCRIPTION

TITLE	Pool
PROJECT & LOCATION	CORNER & COE
CONT./OWNER	NO
ARCH./ENGR.	GEN.G.

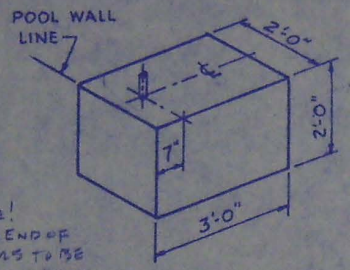
We certify that this drawing was prepared for compliance with the requirements of the International Building Code, 1997 Edition, as amended. By: *MG* NOTARIAL PUBLIC





"A" FRAME PIER BF-4

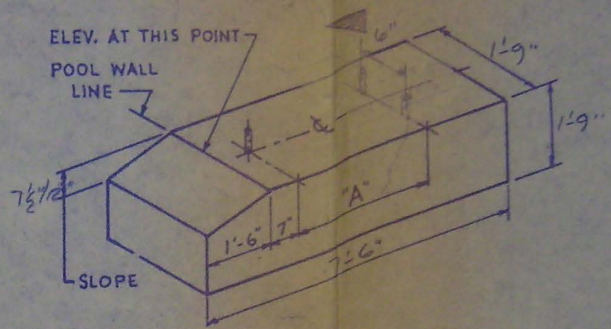
PIER NO.	"A" DIM.	SLOPE	REQ'D
BF-4	3'-8"	7 1/2" / 12"	2



NOTE!
THIS END OF
PIERS TO BE
KEYED INTO
BEARING WALL

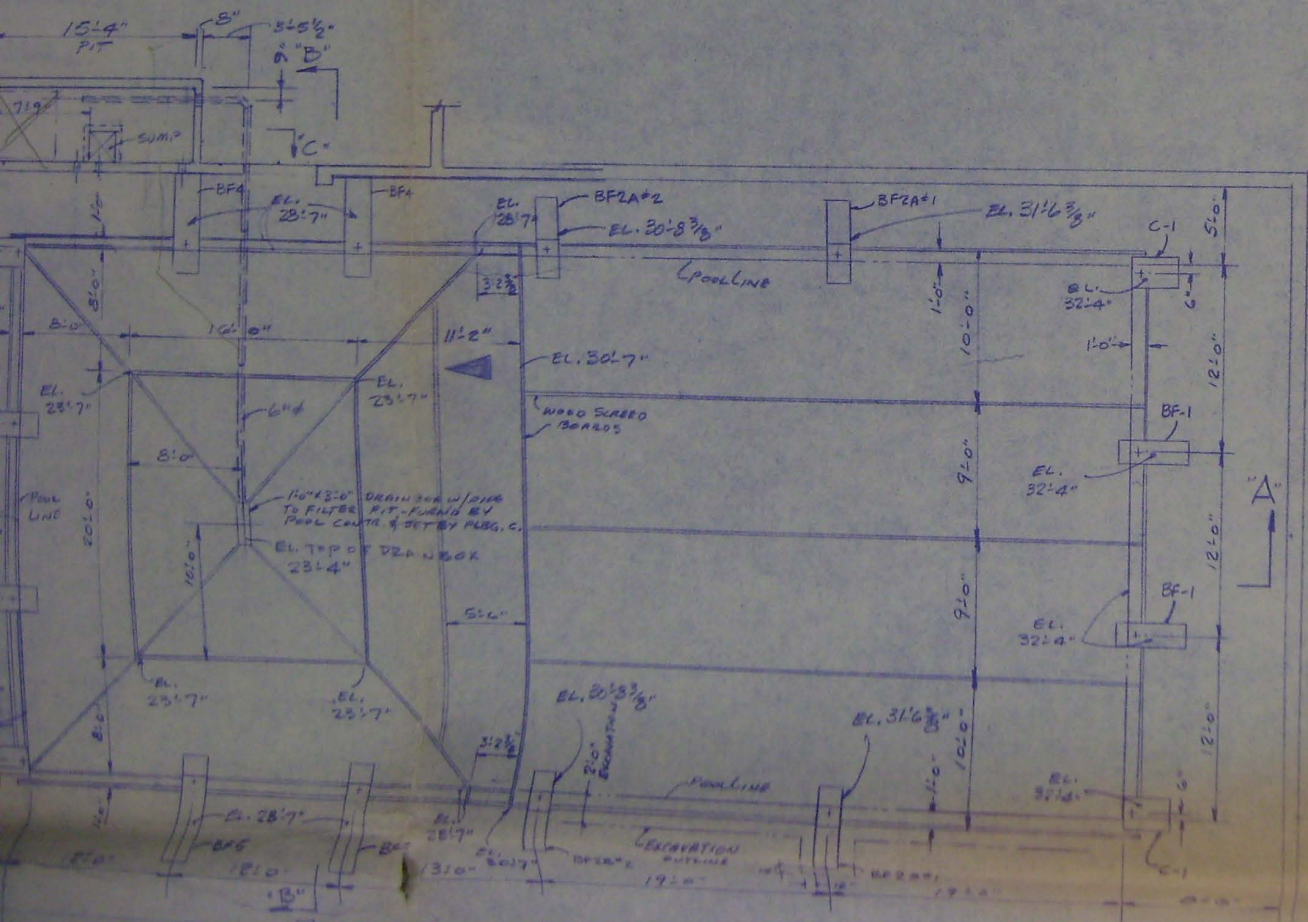
CORNER PIER C-1

(4) REQ'D



"A" FRAME PIER BF-5

PIER NO.	"A" DIM.	SLOPE	REQ'D
BF-5	3'-8"	7 1/2" / 12"	4



48
34-1