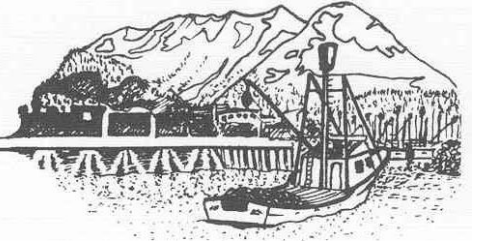


CITY OF CORDOVA



Chairman:

Andy Craig

Commissioners:

Mike Babic

Max Wiese

Ken Jones

Christa Hoover

Dave Glasen

Tommy Sheridan

Harbormaster:

Tony Schinella

Admin Assistant:

Brandy Griffith

**HARBOR COMMISSION REGULAR MEETING
SEPTEMBER 14, 2022 @ 6:00 PM
COUNCIL ROOM A&B**

AGENDA

CALL TO ORDER

ROLL CALL

Andy Craig, Max Wiese, Ken Jones, Mike Babic, Christa Hoover

1. APPROVAL OF REGULAR AGENDA..... (Voice vote) Page 1

2. APPROVAL OF MINUTES

A. At the next regular meeting

3. COMMUNICATIONS BY VISITORS

A. Audience comments regarding agenda items (3 minutes per speaker)

4. HARBORMASTER REPORT..... Page 2

5. NEW BUSINESS

A. Discussion on purchase of a used 60 Ton Shipyard Transporter.....Page 3-6

B. Fee Schedule/Rate increase for 2023 discussion.....Page 7-8

6. MISCELLANEOUS BUSINESS

A. Change Harbor Commission meeting start time from 6PM to a later time.....(Voice vote)

7. AUDIENCE PARTICIPATION

8. COMMISSION COMMENTS & NEXT MEETING AGENDA ITEMS

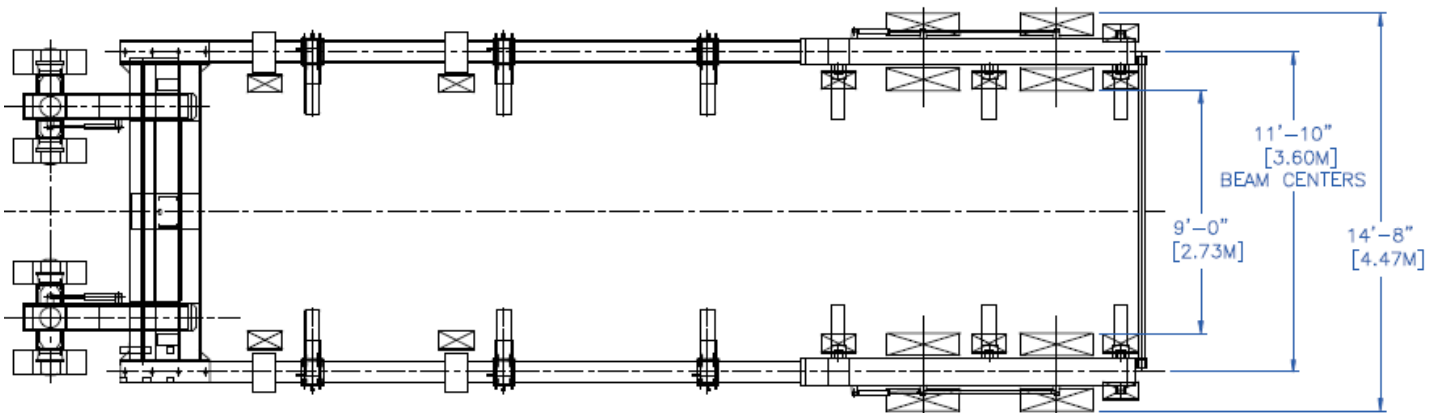
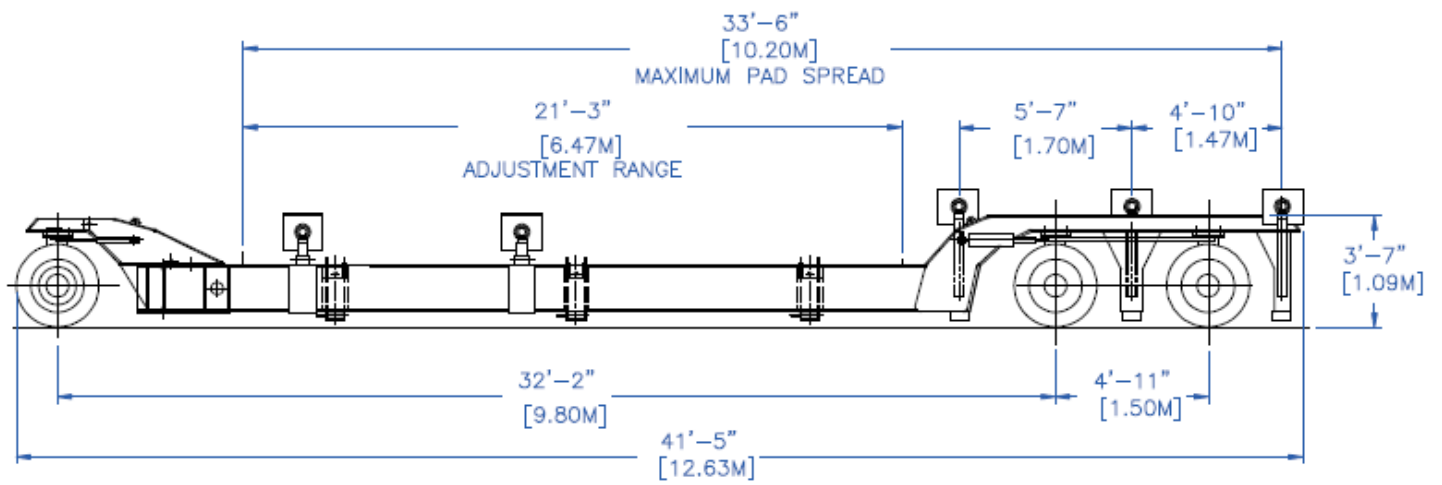
9. ADJOURNMENT.....(Voice vote)

HARBORMASTER REPORT

- Teams meeting with MARAD about grant contract
- Weekly South Harbor Project meetings
- Dave Marshal from Travelift is getting a firm price on the used 60 ton Shipyard transporter trailer
- I will be in Nome 24-30 September for Harbormaster Conference
- Cut brush around South Harbor
- Conducted 117 vessels lifts YTD
- Electrician re-wired 15 slips in the South Harbor
- Taylor Equipment to conducted maintenance to the harbor Bobcat
- Rebuilt 5 South Harbor stalls on J and K float
- Pressure washed and repainted 12,000 gal used oil tank
- Painted South Harbor oil collection structure
- Re-secured light pole on 3rd approach
- Replaced 8 electrical meters and 12 counters in North Harbor pedestals
- Removed light pole on Airplane float
- Paint parking stoppers
- Attended City Council meetings
- Shipped out 5300 gals of used oil
- Delivered 3000 gals of used oil to City Shop YTD
- Delivered 800 gals of used oil to High School YTD
- Collected 5290 gals of used oil/oily water YTD
- Sent out Monthly moorage and storage invoice
- Keegan Estes our summer temp departed and headed back to college
- Thorough cleaning of shop. Painted shop walls
- Cut and painted 15 new slip name signs
- Cut and painted 75 new slip number signs for South Harbor
- Conducted 30 hours of security detail for Samson barge offloads
- Cleaned shop
- Daily harbor restroom cleanings
- Sam Greenwood and I Traveled to Anchorage for South Harbor Project meeting with RM Consultants
- Sam Greenwood, Robin Reich of Solstic AK and I met with Alan Finio of MARAD to walk through the South Harbor Project







STANDARD SPECIFICATIONS

US Measure Metric

General Information

Rated lifting capacity 132,000 lbs 60,000 kg

Shipping weight 19,900 lbs 9,500 kg

Engine

Engine make/model Lombardini Diesel

Horsepower 60 HP 45 kW

Cooling Liquid

Lifting System

Lift cylinder controls Right rear / Left rear / Front

Lifting height distance 12" 300 mm

Number of wheels 12

Steering System

Steering system All wheel steering

Steering modes 2-WS / 4-WS / Crab steering

Steering angle 35°

Center line turning radius (std.) 21'11" 6.67 m

Drive System

Drive type Internal drive

Number of driven wheels 4

Number of hydrostatic brake wheels 4

Number of park brake wheels 2

Gradeability 5%

Speed 164 ft/min 50 m/min

High Speed / Grade Option

Number of driven wheels 4

Number of hydrostatic brake wheels 4

Number of park brake wheels 4

Gradeability 10%

Speed 546 ft/min 166 m/min

Horsepower 95 HP 70 kW

Tires

Tire type Solid

Tire model 300 - 15

Ground bearing pressure 130 PSI 9.0 Bars

Tire maximum load 14,890 lbs 6,750 kg

(up to 164 ft/min or 50 m/min)

Exterior Paint

Color Blue & Grey

Primer 2-coat Rust Preventative

Paint 2-coat Seascape Synthetic

STANDARD

Harbor

Moorage	
<i>Vessel</i>	
Daily, per vessel	\$1.10/ft/day paid in advance \$1.30/ft/day if billed
Monthly, per vessel	\$14.70/ft/mo.
Annual, per vessel	\$50.40/ft/yr.
Failure to register within 24 hours	\$75.00
<i>Parking</i>	
Vehicle Parking (Non-Taxable)	\$30.00 per month
Trailerred Vessels parked beyond authorized times	Daily moorage rate. \$1.30 per ft
Items pre-staged for shipment for over 6 hours	\$1.30 ft./day
<i>Tideland</i>	
Daily, per foot	\$0.90/ft/day
Monthly, per foot	\$6.93/ft/mo.
Annual, per foot	\$13.91/ft/yr.
* All slips will be reserved based on over-all length of vessels, including those slips on "L" floats. Moorage rates on "L" floats will be calculated at 75% of current annual moorage rate (only for slips between approach ramps).	
Cruise ship and day cruise vessel Lightering	\$2.10 per person
Grid Fees (Per Tide)	
<i>Vessel Length</i>	
0' – 40'	\$.80/ft/tide
41' – 58'	\$1.05/ft/tide
Over 58'	\$1.84/ft/tide
Impound Fees	
Vessel	\$1,000.00
Net	\$300.00
Vessel Storage	\$2.75/ft/day
Service Rates	
<i>General Services</i>	
Waitlist	\$25.00/year
Pump Rental	\$33.35/hr.
Electricity (for rental slips with power supply)	\$16.00/day
Labor & Equipment	\$95.29/hr.
Showers	\$6.00
Dock Use Fee	\$2.52/ft/day
Non-harbor user refuse fee	\$10.00 per 3 bags of trash
<i>Staff Time</i>	
Employee Straight Time	\$80.00/hr.
Employee Overtime	\$120.00/hr.
<i>Launch Ramps</i>	
2-Week Permit	\$30.00
Stall Holders	No charge
Non-Stall Holders	\$100.00/year

Wharfage & Dockage	
Wharfage N.O.S. (not otherwise specified)	\$6.75/ton (non-taxable)
Dockage (Also applies to annual stall holders)	\$2.00/ft/day
Landing crafts will be charged Dockage and Wharfage when using ramps	
Vessel Storage	
Up to 12 Months	\$2.75/ft/mo.
Over 12 Months	\$11.00/ft/mo.
Service Rates	
<u>Water</u>	
Minimum Water Charge	\$40 (for employee labor)
Metered Rate	\$6.00/1000 gallons
RV Dump Station	\$5 each or \$25 per season
<u>Fuels</u>	
	<u>Per Barrel</u>
First 50,000 barrels	\$0.17
Second 50,000 barrels	\$0.15
Over 100,000 barrels	\$0.14
Additional Per gallon	\$0.03
<u>Used Oil</u>	
≤ 100 gallons	\$95.29/ man-hour
> 100 gallons, suitable for burning	\$95.29/man-hour
> 100 gallons, unsuitable for burning	\$47.65/gallon + \$95.29/man-hour
<u>Staff Time</u>	
Employee Straight Time	\$75.60/hr.
Employee Overtime	\$113.40/hr.
<u>Miscellaneous Fees</u>	
	<u>Rate</u>
Electrical Use	\$26.25/day
Washdown	Free up to 2 hours \$72.00/hr. when more than 2 hours
Maintenance area daily use fee	\$16.00
Travel Lift*	
	<u>Rate</u>
<u>Vessel Length</u>	
0' – 40'	\$23.00/ft
41' – 58'	\$24.00/ft
Over 58'	\$27.00/ft
No-Show Fee**	\$350.00
Inspection Haul***	60% of Travel Lift round trip rate
* All rates are per lift or one way. Payment must be paid in advance and for round trip.	
**Boat owner does not show or fails to cancel at least 1 hour before scheduled time. Owner is charged the minimum fee to cover such things as re-blocking, relocating vessels or labor	
***Limited to approval and availability. Vessel is hauled out, left in slings over dock for 2 hours, and returned to the water. After 2 hours, vessel is charged \$75.00 per 15 minutes. Unsuccessful haul is charged 60% round-trip of Travel Lift rate due to vessel configuration and/or weight.	