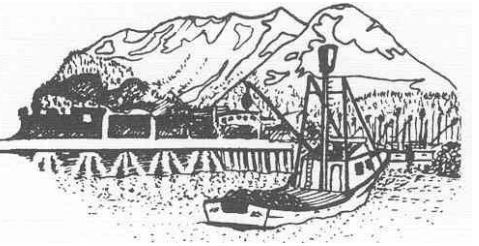


CITY OF CORDOVA



Chairman:
Andy Craig
Commissioners:
Mike Babic
Max Wiese
Ken Jones
Christa Hoover
Harbormaster:
Tony Schinella
Admin Assistant:
Brandy Griffith

HARBOR COMMISSION REGULAR MEETING
AUGUST 10, 2022 @ 6:00 PM
COUNCIL ROOM A&B

AGENDA

CALL TO ORDER

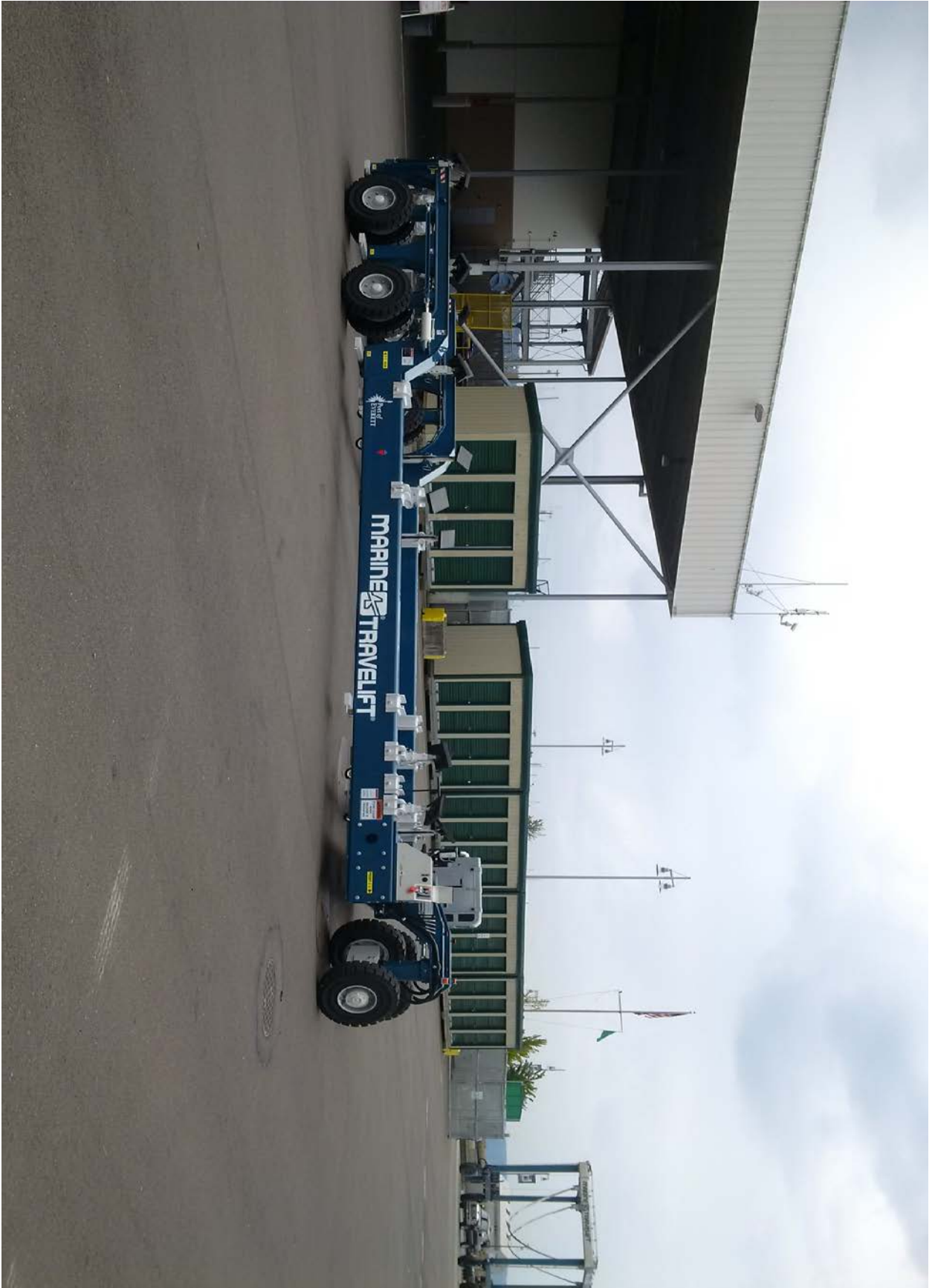
ROLL CALL

Andy Craig, Max Wiese, Ken Jones, Mike Babic, Christa Hoover

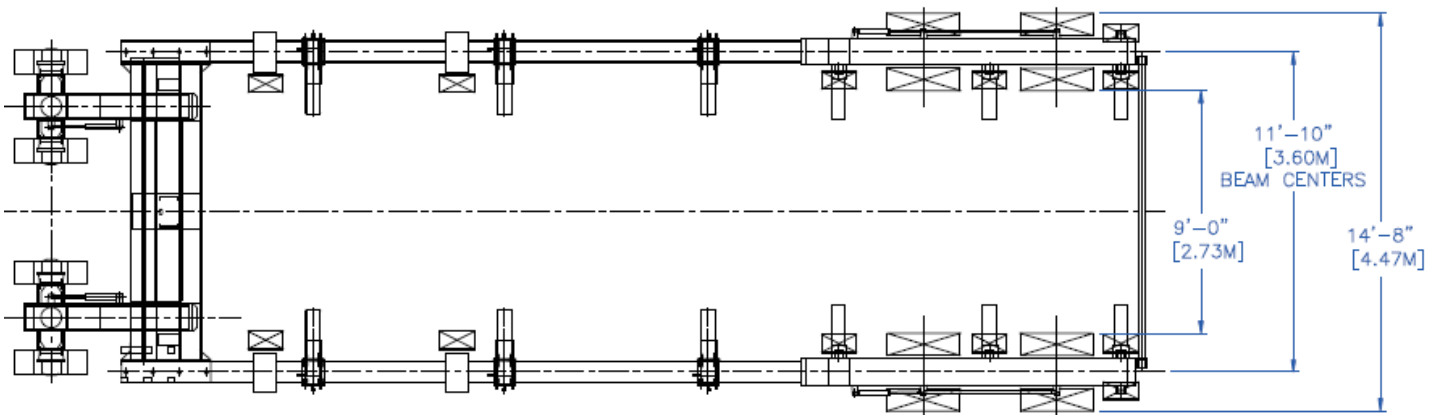
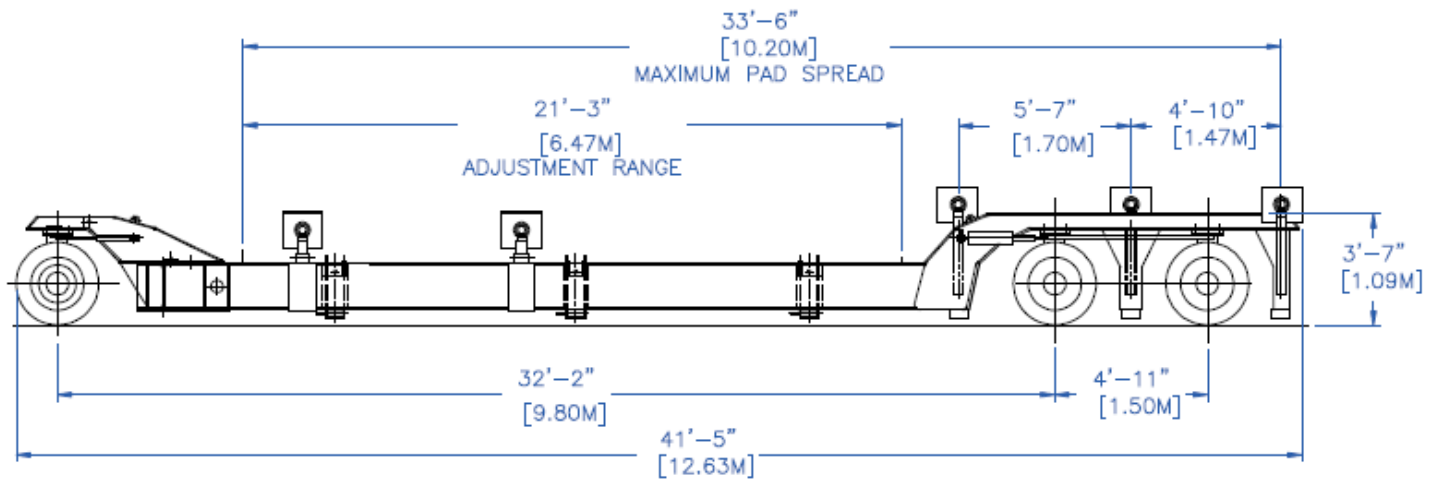
- 1. APPROVAL OF REGULAR AGENDA..... (Voice vote) Page 1**
- 2. APPROVAL OF MINUTES**
 - A. At the next regular meeting
- 3. COMMUNICATIONS BY VISITORS**
 - A. Audience comments regarding agenda items (3 minutes per speaker)
- 4. HARBORMASTER REPORT..... Page 2**
- 5. NEW BUSINESS**
 - A. Discussion on purchase of a used 60 Ton Shipyard Transporter.....Page 3-6
 - B. Fee Schedule/Rate increase for 2023 discussion.....Page 7-8
- 6. MISCELLANEOUS BUSINESS**
 - A. Change Harbor Commission meeting start time from 6PM to a later time.....(Voice vote)
- 7. AUDIENCE PARTICIPATION**
- 8. COMMISSION COMMENTS & NEXT MEETING AGENDA ITEMS**
- 9. ADJOURNMENT.....(Voice vote)**

HARBORMASTER REPORT

- Teams meeting with MARAD about grant contract
- Weekly South Harbor Project meetings
- Dave Marshal from Travelift is getting a firm price on the used 60 ton Shipyard transporter trailer
- Cut brush around South Harbor
- Conducted 107 vessels lifts YTD
- Electrician re-wired 15 slips in the South Harbor
- Taylor Equipment scheduled to conduct maintenance and repairs to harbor Bobcat
- Rebuilt 3 South Harbor stalls on J and K float
- Pressure washed and repainted 12,000 gal used oil tank
- Painted South Harbor oil collection structure
- Re-secured light pole on 3rd approach
- Replaced 4 electrical meters and 6 counters in North Harbor pedestals
- Removed light pole on Airplane float
- Paint parking stoppers
- Attended City Council meeting
- Shipped out 5300 gals of used oil
- Delivered 3000 gals of used oil to City Shop YTD
- Delivered 800 gals of used oil to High School YTD
- Collected 5290 gals of used oil/oily water YTD
- Sent out Monthly moorage and storage invoice
- Keegan Estes our summer temp will be departing and heading back to college this week
- Thorough cleaning of shop. Painted shop walls
- Cut and painted 15 new slip name signs
- Cut and painted 20 new slip number signs for South Harbor
- Conducted 16 hours of security detail for Samson barge offloads
- Cleaned shop
- Daily harbor restroom cleanings







STANDARD SPECIFICATIONS

US Measure Metric

General Information

Rated lifting capacity 132,000 lbs 60,000 kg

Shipping weight 19,900 lbs 9,500 kg

Engine

Engine make/model Lombardini Diesel

Horsepower 60 HP 45 kW

Cooling Liquid

Lifting System

Lift cylinder controls Right rear / Left rear / Front

Lifting height distance 12" 300 mm

Number of wheels 12

Steering System

Steering system All wheel steering

Steering modes 2-WS / 4-WS / Crab steering

Steering angle 35°

Center line turning radius (std.) 21'11" 6.67 m

Drive System

Drive type Internal drive

Number of driven wheels 4

Number of hydrostatic brake wheels 4

Number of park brake wheels 2

Gradeability 5%

Speed 164 ft/min 50 m/min

High Speed / Grade Option

Number of driven wheels 4

Number of hydrostatic brake wheels 4

Number of park brake wheels 4

Gradeability 10%

Speed 546 ft/min 166 m/min

Horsepower 95 HP 70 kW

Tires

Tire type Solid

Tire model 300 - 15

Ground bearing pressure 130 PSI 9.0 Bars

Tire maximum load 14,890 lbs 6,750 kg

(up to 164 ft/min or 50 m/min)

Exterior Paint

Color Blue & Grey

Primer 2-coat Rust Preventative

Paint 2-coat Seascape Synthetic

STANDARD

Harbor

Moorage	
<i>Vessel</i>	
Daily, per vessel	\$1.10/ft/day paid in advance \$1.30/ft/day if billed
Monthly, per vessel	\$14.70/ft/mo.
Annual, per vessel	\$50.40/ft/yr.
Failure to register within 24 hours	\$75.00
<i>Parking</i>	
Vehicle Parking (Non-Taxable)	\$30.00 per month
Trailerred Vessels parked beyond authorized times	Daily moorage rate. \$1.30 per ft
Items pre-staged for shipment for over 6 hours	\$1.30 ft./day
<i>Tideland</i>	
Daily, per foot	\$0.90/ft/day
Monthly, per foot	\$6.93/ft/mo.
Annual, per foot	\$13.91/ft/yr.
* All slips will be reserved based on over-all length of vessels, including those slips on "L" floats. Moorage rates on "L" floats will be calculated at 75% of current annual moorage rate (only for slips between approach ramps).	
Cruise ship and day cruise vessel Lightering	\$2.10 per person
Grid Fees (Per Tide)	
<i>Vessel Length</i>	
0' – 40'	\$.80/ft/tide
41' – 58'	\$1.05/ft/tide
Over 58'	\$1.84/ft/tide
Impound Fees	
Vessel	\$1,000.00
Net	\$300.00
Vessel Storage	\$2.75/ft/day
Service Rates	
<i>General Services</i>	
Waitlist	\$25.00/year
Pump Rental	\$33.35/hr.
Electricity (for rental slips with power supply)	\$16.00/day
Labor & Equipment	\$95.29/hr.
Showers	\$6.00
Dock Use Fee	\$2.52/ft/day
Non-harbor user refuse fee	\$10.00 per 3 bags of trash
<i>Staff Time</i>	
Employee Straight Time	\$80.00/hr.
Employee Overtime	\$120.00/hr.
<i>Launch Ramps</i>	
2-Week Permit	\$30.00
Stall Holders	No charge
Non-Stall Holders	\$100.00/year

Wharfage & Dockage	
Wharfage N.O.S. (not otherwise specified)	\$6.75/ton (non-taxable)
Dockage (Also applies to annual stall holders)	\$2.00/ft/day
Landing crafts will be charged Dockage and Wharfage when using ramps	
Vessel Storage	
Up to 12 Months	\$2.75/ft/mo.
Over 12 Months	\$11.00/ft/mo.
Service Rates	
<i>Water</i>	
Minimum Water Charge	\$40 (for employee labor)
Metered Rate	\$6.00/1000 gallons
RV Dump Station	\$5 each or \$25 per season
<i>Fuels</i>	
	<i>Per Barrel</i>
First 50,000 barrels	\$0.17
Second 50,000 barrels	\$0.15
Over 100,000 barrels	\$0.14
Additional Per gallon	\$0.03
<i>Used Oil</i>	
≤ 100 gallons	\$95.29/ man-hour
> 100 gallons, suitable for burning	\$95.29/man-hour
> 100 gallons, unsuitable for burning	\$47.65/gallon + \$95.29/man-hour
<i>Staff Time</i>	
Employee Straight Time	\$75.60/hr.
Employee Overtime	\$113.40/hr.
<i>Miscellaneous Fees</i>	
	<i>Rate</i>
Electrical Use	\$26.25/day
Washdown	Free up to 2 hours \$72.00/hr. when more than 2 hours
Maintenance area daily use fee	\$16.00
Travel Lift*	
	<i>Rate</i>
<i>Vessel Length</i>	
0' – 40'	\$23.00/ft
41' – 58'	\$24.00/ft
Over 58'	\$27.00/ft
No-Show Fee**	\$350.00
Inspection Haul***	60% of Travel Lift round trip rate
* All rates are per lift or one way. Payment must be paid in advance and for round trip.	
**Boat owner does not show or fails to cancel at least 1 hour before scheduled time. Owner is charged the minimum fee to cover such things as re-blocking, relocating vessels or labor	
***Limited to approval and availability. Vessel is hauled out, left in slings over dock for 2 hours, and returned to the water. After 2 hours, vessel is charged \$75.00 per 15 minutes. Unsuccessful haul is charged 60% round-trip of Travel Lift rate due to vessel configuration and/or weight.	