

**Mayor**

James Kallander

**Council Members**

Keith van den Broek

James Kacsh

David Allison

Bret Bradford

EJ Cheshier

David Reggiani

Robert Beedle

**City Manager**

Mark Lynch

**City Clerk**

Susan Bourgeois

**Deputy Clerk**

Robyn Kincaid

**Student Council**

Dustin Marchant

Carl Ranney

**COUNCIL WORK SESSION  
MARCH 21, 2012 @ 7:00 PM  
LIBRARY MEETING ROOM**

**AGENDA**

**A. CALL TO ORDER**

**B. ROLL CALL**

Mayor James Kallander, Council members Keith van den Broek, James Kacsh, David Allison, Bret Bradford, EJ Cheshier, David Reggiani, and Robert Beedle

**C. COMMUNICATIONS BY AND PETITIONS FROM VISITORS**

1. Audience Comments regarding agenda items

**D. WORKSESSION TOPIC**

2. Proposed solid waste system upgrades – presentation by..... (page 1)  
Director of Public Works **Moe Zamarron**

**E. AUDIENCE PARTICIPATION**

**F. COUNCIL COMMENTS**

**G. ADJOURNMENT**

**If you have a disability that makes it difficult to attend  
city-sponsored functions,  
You may contact 424-6200 for assistance.**

All City Council agendas and packets available online at [www.cityofcordova.net](http://www.cityofcordova.net)

# **PROPOSED SOLID WASTE SYSTEM UPGRADES**

CHANGES INTENDED TO PRESERVE LANDFILL  
SPACE, REPURPOSE ADDITIONAL WASTE  
MATERIALS AND IMPROVE THE QUALITY OF  
LIFE IN THE CITY OF CORDOVA

**THE CITY-OWNED BURN PILE** is not currently regulated and as a result, an assortment of non-acceptable materials are being left for improper disposal. Relocation due to quarry operation is a great opportunity to address problems that are inherent with an open burn site.

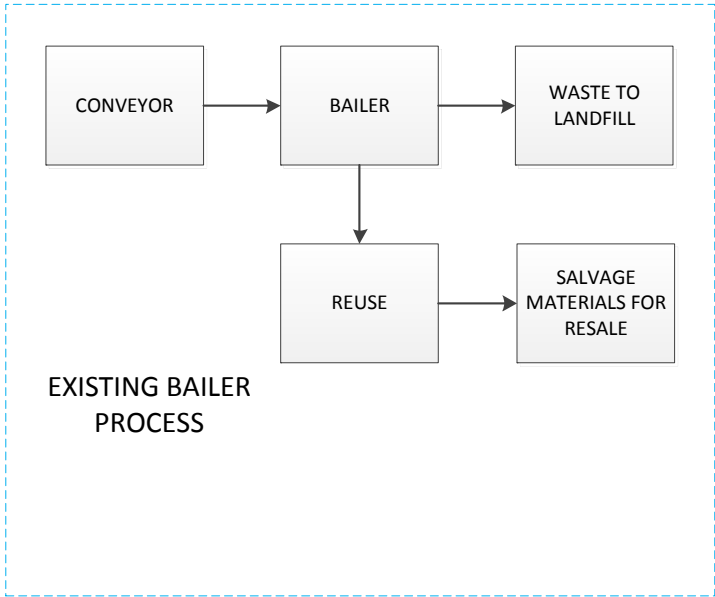


**AT THE 17-MILE LANDFILL,  
the 10 year life (at current disposal rates) can be  
stretched to 28 years by implementing new waste  
management techniques**



# EXISTING BALER PROCESS

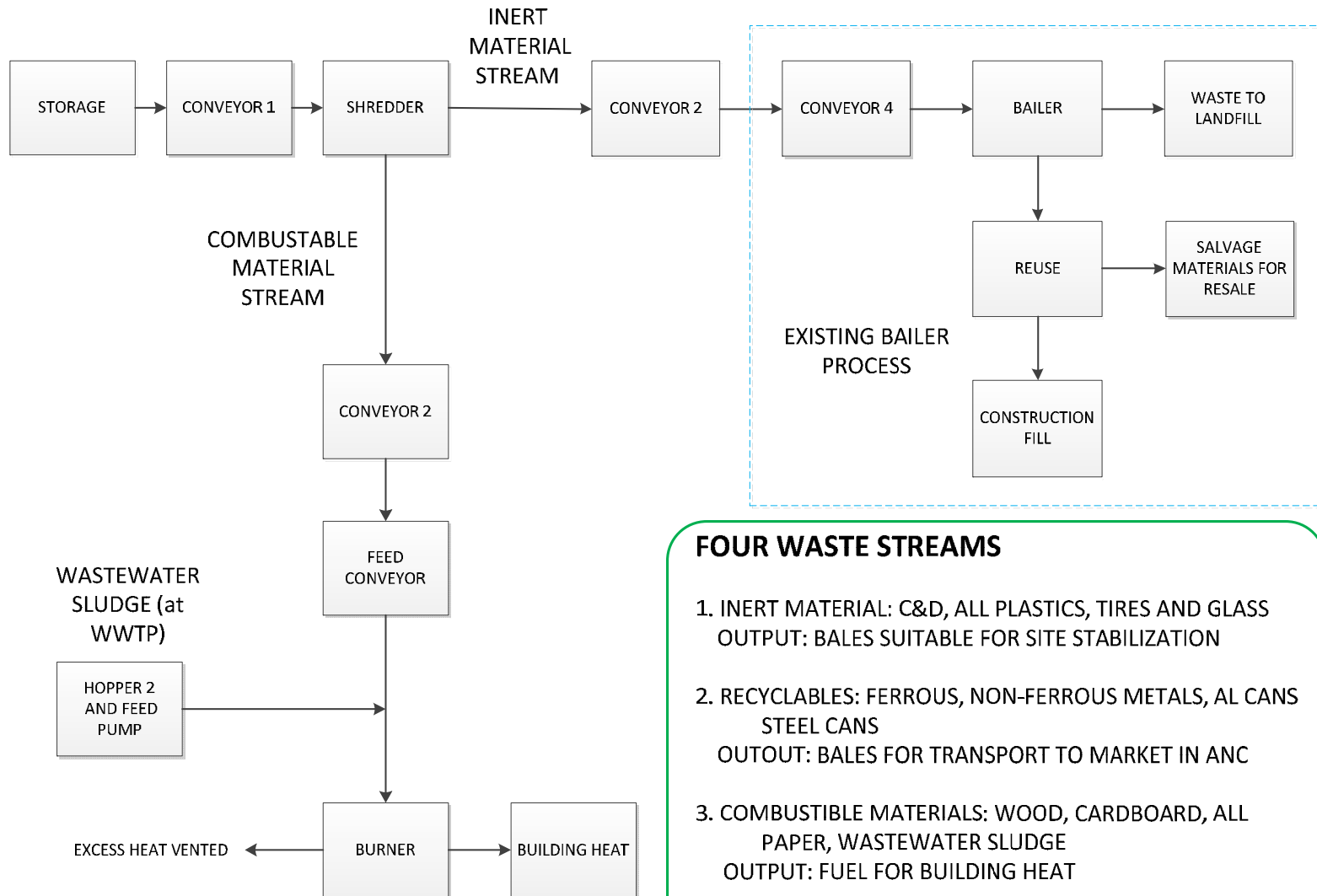
CURRENT  
MATERIAL  
STREAM



## THREE WASTE STREAMS

1. INERT MATERIAL: C&D, TIRES AND MISC.  
OUTPUT: MATERIAL SHIPPED LOOSE FOR DISPOSAL
2. RECYCLABLES: AL CANS AND PLASTIC BOTTLES  
OUTPUT: BALES FOR TRANSPORT BY NVE, STEEL ACCUMULATED FOR RECLAIMING LATER
3. MSW: ALL HOUSEHOLD WASTE  
OUTPUT: BALED FOR DISPOSAL IN LANDFILL

# PROPOSED BALER PROCESS



## FOUR WASTE STREAMS

1. INERT MATERIAL: C&D, ALL PLASTICS, TIRES AND GLASS  
OUTPUT: BALES SUITABLE FOR SITE STABILIZATION
2. RECYCLABLES: FERROUS, NON-FERROUS METALS, AL CANS  
STEEL CANS  
OUTPUT: BALES FOR TRANSPORT TO MARKET IN ANC
3. COMBUSTIBLE MATERIALS: WOOD, CARDBOARD, ALL  
PAPER, WASTEWATER SLUDGE  
OUTPUT: FUEL FOR BUILDING HEAT
4. MSW: REDUCED VOLUME OF HOUSEHOLD WASTE  
OUTPUT: BALED FOR DISPOSAL IN LANDFILL



# NEW BALER EQUIPMENT

WOOD CHIP BURNER



SLOW SPEED SHREDDER

# MATERIAL RE-SIZING



SCRAP  
STEEL

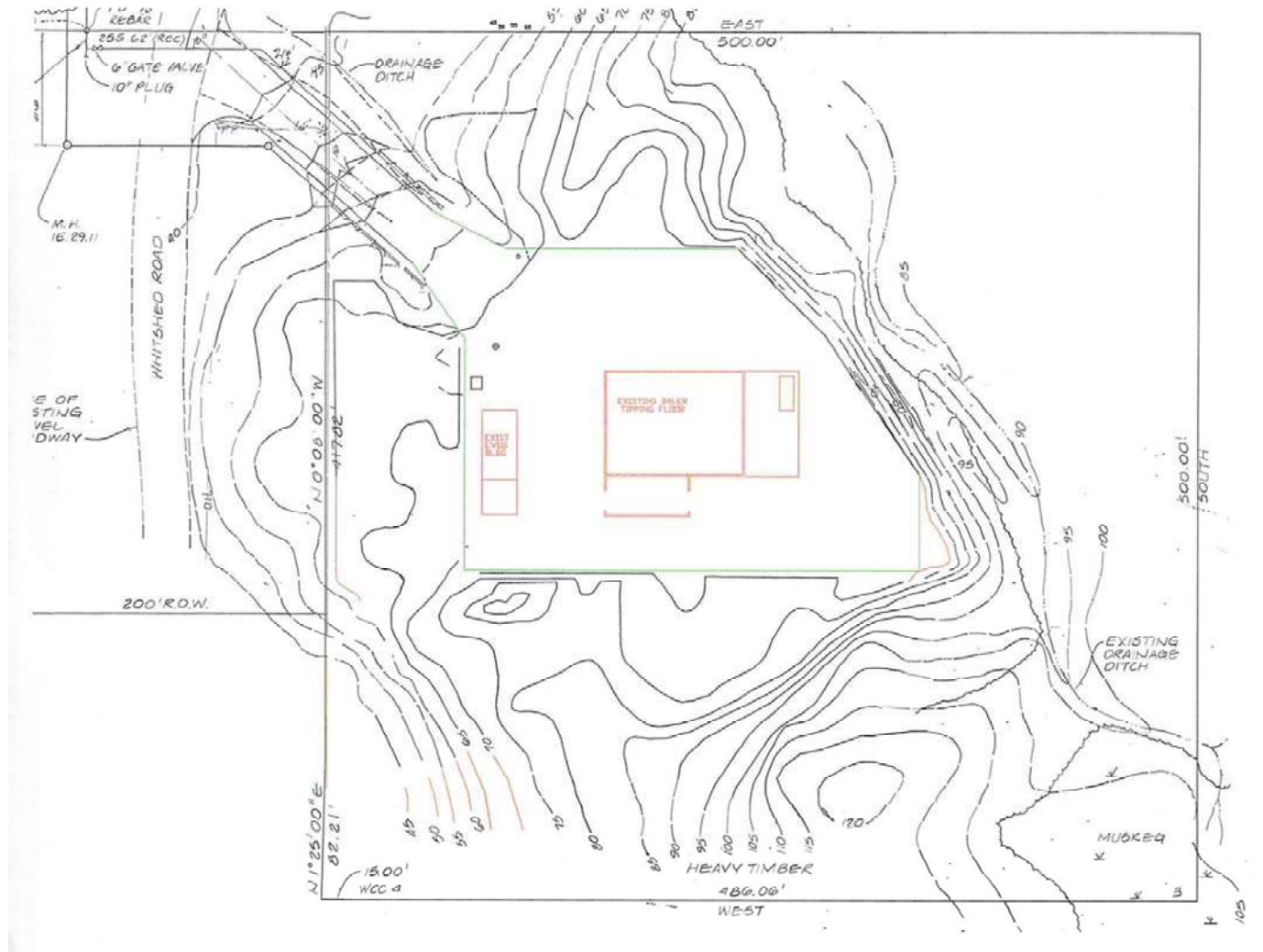


C & D  
MATERIAL

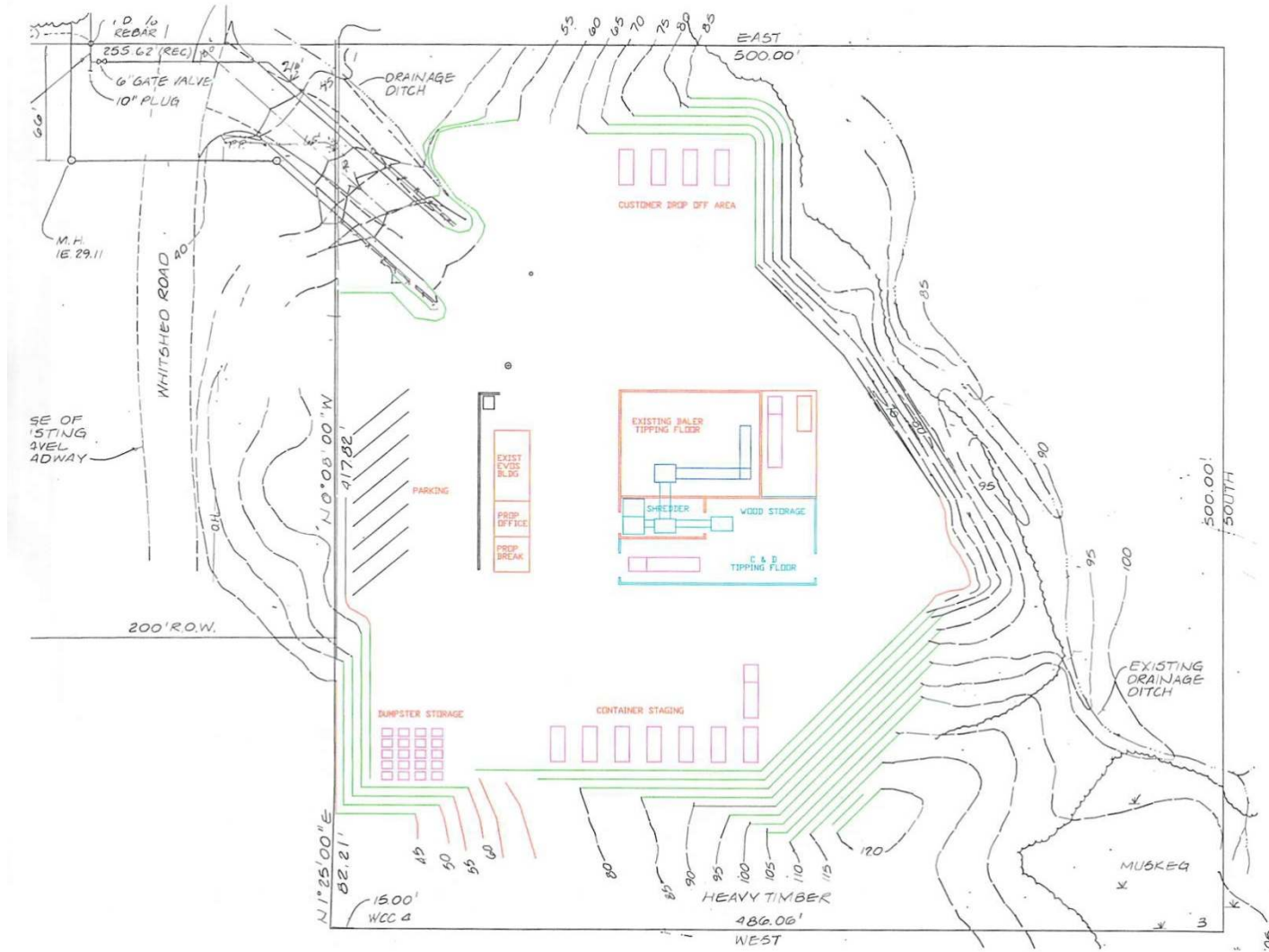




# EXISTING BALER SITE



# PROPOSED BALER SITE



# INERT MATERIAL BALES

- Line the landfill perimeter with bales of inert material faced with rock. This provides additional airspace within the existing footprint as well as a new re-use of C&D material.



# COSTS AND BENEFITS

- COSTS

- New construction
- New equipment
- Additional O&M costs

- BENEFITS

- Extended landfill life
- Fewer trips to the landfill
- New energy capture
- Fuel expense savings
- Organized recycling program
- New revenue stream
- Sludge redirect
- Increased reuse of materials

# INITIAL COSTS - \$ 1,260,000

|                            |   |   |   |   |           |                   |
|----------------------------|---|---|---|---|-----------|-------------------|
| <b>Construction</b>        | . | . | . | . | .         | <b>\$ 475,000</b> |
| New Storage Building       | . | . | . | . | \$175,000 |                   |
| Upgrades to Baler Building | . | . | . | . | \$110,000 |                   |
| Site Work                  | . | . | . | . | \$190,000 |                   |
| <br>                       |   |   |   |   |           |                   |
| <b>New equipment</b>       | . | . | . | . | .         | <b>\$ 785,000</b> |
| Conveyor 1                 | . | . | . | . | \$75,000  |                   |
| Conveyor 2                 | . | . | . | . | \$35,000  |                   |
| Feed Conveyors (2)         | . | . | . | . | \$125,000 |                   |
| Slow-Speed Shredder        | . | . | . | . | \$290,000 |                   |
| Hopper                     | . | . | . | . | \$45,000  |                   |
| Hopper 2/Feed Pump         | . | . | . | . | \$85,000  |                   |
| Wood-fired Heater          | . | . | . | . | \$200,000 |                   |

# FUNDING SOURCES - \$ 1,278,000

|                                     |   |   |   |   |   |                   |
|-------------------------------------|---|---|---|---|---|-------------------|
| <b>Landfill Closure Loan*</b>       | . | . | . | . | . | <b>\$ 850,000</b> |
| <br>                                |   |   |   |   |   |                   |
| <b>Landfill Construction Grant*</b> | . | . | . | . | . | <b>\$ 300,000</b> |
| <br>                                |   |   |   |   |   |                   |
| <b>Matching Funds</b>               | . | . | . | . | . | <b>\$ 128,000</b> |

\* Both the loan and the grant will expire this year if not used

## NEW OPERATING COSTS

|                 |                        |
|-----------------|------------------------|
| Electric        | \$ 850                 |
| Loan and Match  | \$ 4,720               |
| Education       | \$ 500                 |
| Facility Maint  | \$ 750                 |
| Machinery Maint | \$ 400                 |
| Labor           | \$ 8,500               |
| <u>Total</u>    | <u>\$ 15,720/month</u> |

## REVENUE and SAVINGS

|                       |                       |
|-----------------------|-----------------------|
| Sale of Recyclables   | \$ 2,250              |
| Heating               | \$ 1,200              |
| Vehicle Operation     | \$ 250                |
| Equipment Operation   | \$ 350                |
| Landfill Construction | \$ 2,500              |
| Labor                 | \$ 1,500              |
| <u>Total</u>          | <u>\$ 8,050/month</u> |

|                            |                 |
|----------------------------|-----------------|
| NEW OPERATING COSTS        | \$ 15,720       |
| <u>REVENUE AND SAVINGS</u> | <u>\$ 8,050</u> |
| NET COST INCREASE          | \$ 7,670        |

|                         |           |
|-------------------------|-----------|
| CURRENT MONTHLY EXPENSE | \$ 66,600 |
| PROPOSED MONTHLY TOTAL  | \$ 74,270 |

$7,670 / 66,600 = 11.5\%$  INCREASE

RESIDENTIAL BILLS INCREASE \$4.64 FROM \$38.50 TO \$42.93.



# DETAIL OF BENEFITS

Extended landfill life

- Less material to dispose of

- Expanded landfill airspace

- Compaction of C&D

Fewer trips to the landfill

- Less material to transport

- Waste material densely packed

New energy capture

- Wood, cardboard and paper

- Sewage sludge

Fuel expense savings

- Lower transport costs

- Heating costs lower

Organized recycling program

- Tires, all plastics, metals

New revenue stream

- Metal sales in ANC

Sludge redirect

- Disposal volume reduced

Increased reuse of materials

- Landfill management

- Recycling

- Repurposed inert fill

Improved quality of life

- Air and water quality

- Sustainability of fishing

- Positive first impression